

LUXBEAT

LUXBEAT XL 500

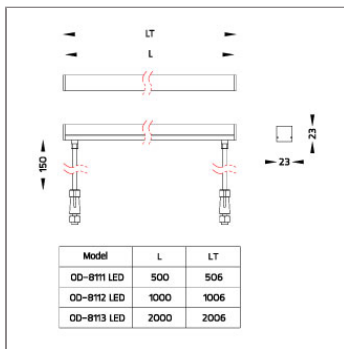
LINEAR LIGHT



LAST UPDATE: 15-06-2026



LuxBeat, LuxBeat L, LuxBeat XL, LuxBeat Inground, and LuxBeat Underwater are miniature linear accent luminaires for both flexible and fixed applications. With a patented optical system, they deliver uniform light output from every angle, creating precise, high-contrast illumination of architectural features. Their compact size enables accurate highlighting and versatile installation. LuxBeat is top bendable and can be shortened on-site to meet project requirements. Stainless steel clips allow direct mounting to walls or façades without surface cleaning or pretreatment, simplifying installation. LuxBeat L features an aluminum housing for fixed use or clips for flexible mounting, ensuring smooth, shadow-free connections. Its slim design produces sharp, elegant lighting that highlights architectural details. LuxBeat XL offers a robust aluminum housing with an integrated wiring channel and bottom connectors for seamless installation. It is available as fixed or tiltable surface luminaires, recessed wall and ceiling lights, and pendants, with custom lengths on request. LuxBeat Inground provides a recessed solution for concrete floors and outdoor grounds, delivering durability and the same optical performance as the rest of the family. LuxBeat Underwater extends this reliability into pools, fountains, and water features. For RGBW color projects, contact the Unilamp sales team.



Technical Data



Ordering Code :	8111-0-2-399-00
Lamp :	SMD-M LED
Beam :	120°
CCT :	RGBW
CRI :	CRI >40
SDCM :	SDCM = 5
Luminaire Lumen :	210 lm
Luminaire Wattage :	9 W
Efficacy :	23 lm/W
Ambient Temperature :	45°C
Lumen Maintenance	L80B10 >60,000 h
Controller :	Remote
Input Voltage :	24Vdc
Net Weight :	- kg.

Ordering code guide

XXXX-X-X-XXX-XX

B
D

A
C
E

- A Product Code
- B Reflector
- C Electrical Component
- D Lamp
- E Color



Icon definition

*Due to the constancy of product development, we reserve the right to alter all specification without prior notice.

Unilamp Co., Ltd.
 461 Ramintra Road, Kannayao, Bangkok 10230 Thailand
 Tel : +66(0)2 943 2420-1, +66(0)2 946 4170-1
 Fax : +66(0)2 943 2419
 online@unilamp.co.th
 www.unilamp.co.th

LUXBEAT

LUXBEAT XL 500

LINEAR LIGHT

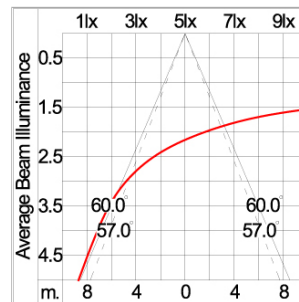
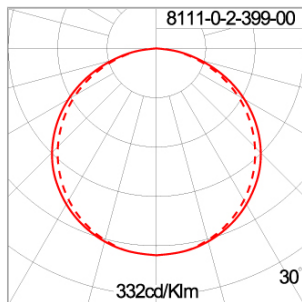


LAST UPDATE: 15-06-2026

Specification

IEC Standard	IEC 60598-1 General Requirement IEC 60598-2-1 Fixed Luminaires
Protection	IP67 Class III
Luminaires Body Housing	Advanced co-extruded silicone housing offering superior flexibility and longevity. Dual-bend structure supports both top-bend and side-bend applications. Bottom feed connection allows hidden wiring integration. Factory cutting available at fixed 62.5 mm steps.
Cable Entry	Electrical loop in and out, with M12 connector
Led	High efficiency LED module utilized chips from world renowned manufacturer. Assembled on FPC.
Driver	Requires the use of a 4 channel CV RGBW controller
Internal Wire	Tinned copper conductor with silicone insulated internal wire. IMQ approved. Working temperature -40°C to +180°C.
Pre-Wire Cable	Pre-wired cable 5x0.75sqmm, L=150mm
Caution	Installation, maintenance, and repairs should only be performed by a certified electrician. The maximum continuous installation length per driver is 5 meters. Custom lengths can be prepared upon request by the factory.

Light Distribution



*Due to the constancy of product development, we reserve the right to alter all specification without prior notice.

Unilamp Co., Ltd.
461 Ramintra Road, Kannayao, Bangkok 10230 Thailand
Tel : +66(0)2 943 2420-1, +66(0)2 946 4170-1
Fax : +66(0)2 943 2419
online@unilamp.co.th
www.unilamp.co.th

LUXBEAT

LUXBEAT XL 500

LINEAR LIGHT



LAST UPDATE: 15-06-2026

Accessories



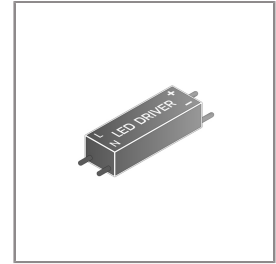
Ordering Code:
AUN-CON-0009-00
IP68 connection device,
cable diameter 5-9.5mm,
On-Off



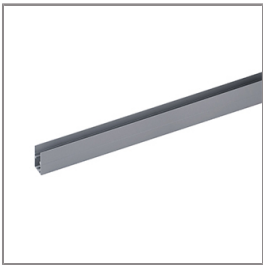
Ordering Code:
AUN-CON-0010-00
IP68 connection device 3
pole, cable diameter
5-9.5mm, with distribution
block



Ordering Code:
AUN-DRG-0011-00
LED constant voltage
driver, 24VDC, 150W



Ordering Code:
AUN-DRG-0024-00
LED constant voltage
driver, 24VDC, 200W



Ordering Code:
AUN-MOT-0014-XX
Surface mount profile, L=
510mm



Ordering Code:
ATR-MOT-0001-00
Suspension kit, with
mounting loop



Ordering Code:
ATR-MOT-0002-00
Suspension kit, with
mounting post



Ordering Code:
AUN-DRG-0027-00
LED constant voltage
driver, 24VDC, 72W



Ordering Code:
AUN-RCH-0013-XX
Recessed ceiling mounting
profile, L= 546mm



Ordering Code:
AUN-MOT-0026-XX
Plasterboard wall mounting
profile, L= 546mm



Ordering Code:
AUN-MOT-0029-XX
Wall niche mounting
profile, L= 546mm



Ordering Code:
ATR-CON-0002-00
Feed in cable 5x0.75sqmm,
L= 2000mm, for RGBW
luminaire, with M12
connector

*Due to the constancy of product development,
we reserve the right to alter all specification
without prior notice.

Unilamp Co., Ltd.
461 Ramintra Road, Kannayao, Bangkok 10230 Thailand
Tel : +66[0]2 943 2420-1, +66[0]2 946 4170-1
Fax : +66[0]2 943 2419
online@unilamp.co.th
www.unilamp.co.th

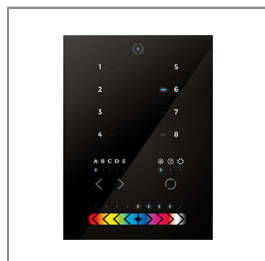
LUXBEAT

LUXBEAT XL 500

LINEAR LIGHT



LAST UPDATE: 15-06-2026



Ordering Code:
AUN-DMX-0023-00
DMX controller,
Touchscreen



Ordering Code:
AUN-DMX-0024-00
DMX controller, 1-Channel



Ordering Code:
AUN-DMX-0025-00
DMX controller, 2-Channel



Ordering Code:
AUN-DMX-0026-00
DMX Connector, 3 pin
male, L= 1000mm



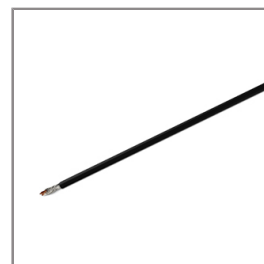
Ordering Code:
AUN-DMX-0027-01
Splitter, IP67 aluminum
enclosure, DMX



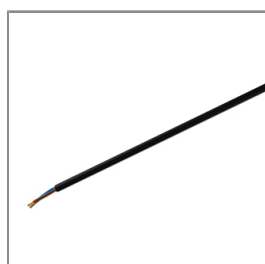
Ordering Code:
AUN-CON-0022-00
IP67 connection device,
cable diameter 4.5-11mm,
DMX



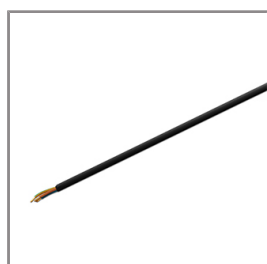
Ordering Code:
AUN-CON-0023-00
IP67 connection device,
cable diameter 4.5-11mm,
distribution block , DMX



Ordering Code:
ATR-CAB-0006-00
Cable signal, L= 2000mm,
DMX



Ordering Code:
AUN-CAB-0040-00
Cable H07RN-F 2x1sqmm,
L= 2000mm



Ordering Code:
AUN-CAB-0039-00
Cable H07RN-F 3x1sqmm,
L= 2000mm



Ordering Code:
AUN-BRK-0007-XX
Mounting bracket,
adjustable



Ordering Code:
AUN-DRG-0119-00
LED constant voltage
decoder, 24Vdc, 180W,
with IP67 GFR polymer
enclosure, DMX512/RDM

*Due to the constancy of product development,
we reserve the right to alter all specification
without prior notice.

Unilamp Co., Ltd.
461 Ramintra Road, Kannayao, Bangkok 10230 Thailand
Tel : +66[0]2 943 2420-1, +66[0]2 946 4170-1
Fax : +66[0]2 943 2419
online@unilamp.co.th
www.unilamp.co.th