

KORNER

KORNER1

POLE MOUNTED LIGHT



LAST UPDATE: 19-05-2026



KORNER is minimalistic linear shaped pole luminaire and wall light. The use of clear lines, closed surfaces and hidden mounting hardware provide an attractive unobtrusive appearance, and easy installation. The unique 16 stage paint process and use of virtually copper free aluminum alloys guarantee an ultra-long product lifetime. KORNER is suitable for medium mounting heights when using aluminum poles and high mounting heights of up to 8m in combination of steel poles. Existing circular poles can be utilized with the use of the innovative clamping system. KORNER uses high efficacy LED modules and CAD optimized optics. Ready for light management systems using the D4i protocol and Zhaga book 18 interface. Withstanding ambient temperatures of 50°C and electrical surges make KORNER applicable for most challenging environments.



Technical Data



Ordering Code :	7780-I-5-667-XX
Lamp :	LED
Beam :	T2 - Asymmetric Long Side Throw
CCT :	4000 K
CRI :	CRI >80
SDCM :	SDCM = 3
Lamp Lumen :	4440 lm
Luminaire Lumen :	3040 lm
Lamp Wattage :	23 W
Luminaire Wattage :	27 W
Efficacy :	112 lm/W
Ambient Temperature :	50°C
Lumen Maintenance	L70B10 >60,000 h
Controller :	DALI
Input Voltage :	220-240Vac 50/60Hz
Net Weight :	- kg.



*Due to the constancy of product development, we reserve the right to alter all specification without prior notice.

Unilamp Co., Ltd.
461 Ramintra Road, Kannayao, Bangkok 10230 Thailand
Tel : +66(O)2 943 2420-1, +66(O)2 946 4170-1
Fax : +66(O)2 943 2419
online@unilamp.co.th
www.unilamp.co.th

KORNER1

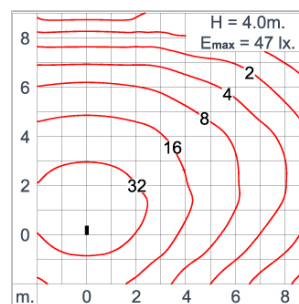
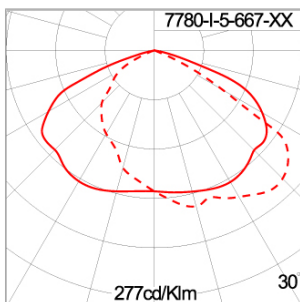
POLE MOUNTED LIGHT

LAST UPDATE: 19-05-2026

Specification

IEC Standard	IEC 60598-1 General Requirement IEC 60598-2-1 Fixed Luminaires										
Protection	IP66 Class I										
IK Rating	Protection against mechanical impact IK10 on body and IK08 on optical part.										
Luminaires Body Housing	Extruded aluminum 56063 alloy body with low copper content. High-pressure die cast aluminum alloy body and components.										
Coating Process	Nano Ceramic surface conversion, resistant to corrosive environment. Luminaire primarily coated with epoxy resin and top coated with UV stabilized polyester powder and cured in digital temperature controlled chamber at 200°C.										
Diffuser	Impact resistant safety tempered glass cover. Able to withstand the temperature up to 250°C.										
Lens	Molded PC lens from renowned manufacturers in various light distribution patterns.										
Gasket	Weather resistant silicone gasket. Working temperature -40°C to +200°C.										
External Screws	External screws are in stainless steel with protection grease.										
Cable Entry	Cable entry protected by M20 cable gland. To be used with H05RN-F/ H07RN-F cable with 7-13mm. diameter.										
Led	High efficiency LED module utilized chips from world renowned manufacturer. Assembled on MCPCB and mounted on to heat conductive material.										
Driver	High quality DALI Driver in constant current. Conform to applicable safety standards and electromagnetic compatibility.										
Enhanced Protection	The luminaire is equipped with a 10kV surge protection device, the function of the protector is indicated by a LED, performance in compliance with IEC61643-11.										
Internal Wire	Tinned copper conductor with silicone insulated internal wire. IMQ approved. Working temperature -40°C to +180°C.										
Terminal Block	Terminal block in GFR PA6.6 for cable with cross section up to 2.5 sqmm. VDE approved. Class1 luminaire provided with the earth connection.										
Pre-Wire Cable	Pre-wired with 5-core cable for power [3x1 sqmm.] and dimming signal [2x1 sqmm.].										
Caution	Installation work has to be carried on according to the enclosed installation manual.										
Color	<table border="0"> <tr> <td></td> <td>Black O1</td> </tr> <tr> <td></td> <td>Graphite O2</td> </tr> <tr> <td></td> <td>Dark Grey O3</td> </tr> <tr> <td></td> <td>Aluminum Silver O4</td> </tr> <tr> <td></td> <td>White O6</td> </tr> </table>		Black O1		Graphite O2		Dark Grey O3		Aluminum Silver O4		White O6
	Black O1										
	Graphite O2										
	Dark Grey O3										
	Aluminum Silver O4										
	White O6										

Light Distribution



KORNER

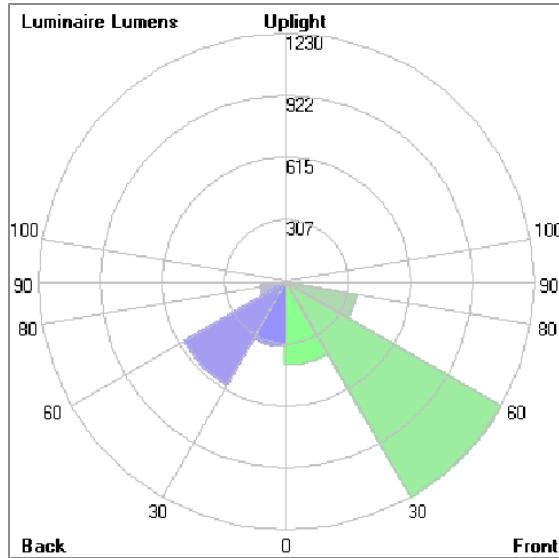
KORNER1

POLE MOUNTED LIGHT



LAST UPDATE: 19-05-2026

Bug Report



Lum. Classification System [LCS]

LCS	Zone	%Lumens	%Lamp	%Lum
FL	[0-30]	412.0	13.6	13.6
FM	[30-60]	1229.8	40.5	40.5
FH	[60-80]	354.5	11.7	11.7
FVH	[80-90]	3.2	0.1	0.1
BL	[0-30]	319.1	10.5	10.5
BM	[30-60]	587.0	19.3	19.3
BH	[60-80]	128.9	4.2	4.2
BVH	[80-90]	2.0	0.1	0.1
UL	[90-100]	0.1	0.0	0.0
UH	[100-180]	1.9	0.1	0.1
Total		3038.5	100.1	100.0
BUG Rating		B1-U1-G1		

*Due to the constancy of product development, we reserve the right to alter all specification without prior notice.

Unilamp Co., Ltd.
461 Ramintra Road, Kannayao, Bangkok 10230 Thailand
Tel : +66[0]2 943 2420-1, +66[0]2 946 4170-1
Fax : +66[0]2 943 2419
online@unilamp.co.th
www.unilamp.co.th

KORNER

KORNER1

POLE MOUNTED LIGHT



LAST UPDATE: 19-05-2026

Accessories



Ordering Code:
AUN-CON-0011-00
IP68 connection device,
cable diameter 7.1-13mm,
1-10V or DALI



Ordering Code:
AUN-CON-0012-00
IP68 connection device 5
pole, cable diameter
7.1-13mm, with distribution
block, 1-10V or DALI



Ordering Code:
AUN-CON-0014-00
IP68 connection device,
cable diameter 8-12.5mm,
1-10V or DALI



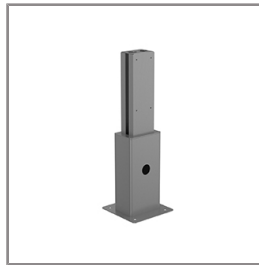
Ordering Code:
AUN-ACB-0008-00
Anchor bolt kit, pole
diameter 102mm and
151x102mm, galvanized
steel pole



Ordering Code:
AUN-ACB-0022-00
Anchor bolt kit, aluminum
pole



Ordering Code:
AUN-ACB-0023-00
Planted root, aluminum
pole



Ordering Code:
AUN-ACB-0024-00
Planted root, galvanized
steel pole



Ordering Code:
AUN-CLP-0010-XX
Pole clamp, pole diameter
60mm, single side
luminaire mounting



Ordering Code:
AUN-CLP-0011-XX
Pole clamp, pole diameter
60mm, double sided
luminaire mounting



Ordering Code:
AUN-CLP-0012-XX
Pole clamp, pole diameter
76mm, single side
luminaire mounting



Ordering Code:
AUN-CLP-0013-XX
Pole clamp, pole diameter
76mm, double sided
luminaire mounting



Ordering Code:
AUN-BRK-0004-XX
Mounting bracket

*Due to the constancy of product development,
we reserve the right to alter all specification
without prior notice.

Unilamp Co., Ltd.
461 Ramintra Road, Kannayao, Bangkok 10230 Thailand
Tel : +66(0)2 943 2420-1, +66(0)2 946 4170-1
Fax : +66(0)2 943 2419
online@unilamp.co.th
www.unilamp.co.th

KORNER

KORNER1

POLE MOUNTED LIGHT

 **Unilamp**

LAST UPDATE: 19-05-2026



Ordering Code:
ALUMINUM-POLE-FOR-KORNER
Please contact Sales
Representative



Ordering Code:
STEEL-POLE-FOR-KORNER
Please contact Sales
Representative

*Due to the constancy of product development,
we reserve the right to alter all specification
without prior notice.

Unilamp Co., Ltd.
461 Ramintra Road, Kannayao, Bangkok 10230 Thailand
Tel : +66[0]2 943 2420-1, +66[0]2 946 4170-1
Fax : +66[0]2 943 2419
online@unilamp.co.th
www.unilamp.co.th