

KRONOS

KRONOS – AREA LIGHT / ROAD OPTIC
DOUBLE SIDED

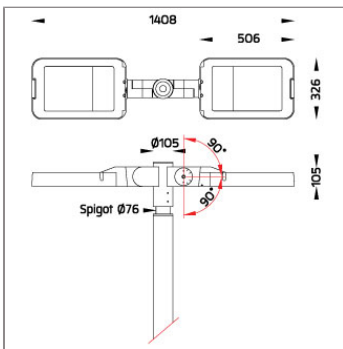
POLE MOUNTED LIGHT



LAST UPDATE: 09-04-2026



A family of Area Light, Surface Washer and Architectural-Grade Flood Light in various mounting application KRONOS utilizes the latest LED technology from renowned manufacturers with high CRI in 3000K or 4000K. The high quality corrosion resistance aluminium housing is filmed with Nano Ceramic and coated with super durable powder. The heat management has been delicately designed and tested under ambient thermal condition Ta 50°C. A graduated scale provides accurate aiming of the luminaire. KRONOS offers various light distribution patterns e.g. Asymmetric Flat Beam [Road Optic] for USA, European, Middle East and Asia regulations, Asymmetric Forward Throw for squares and open spaces, as well as Narrow, Medium, Wide and Elliptical beams for floodlight and façade light applications.



Technical Data



Ordering Code :	7775-K-4-667-XX
Lamp :	LED
Beam :	T4 - Asymmetric Forward Throw
CCT :	4000 K
CRI :	CRI >80
SDCM :	SDCM = 3
Lamp Lumen :	2x17760 lm
Luminaire Lumen :	25760 lm
Lamp Wattage :	2x89 W
Luminaire Wattage :	194 W
Efficacy :	132 lm/W
Ambient Temperature :	50°C
Lumen Maintenance	L70B10 >72,000 h
Controller :	DIM 1-10V
Input Voltage :	220-240Vac 50/60Hz
Net Weight :	15.60 kg.

Ordering code guide

XXXX-X-X-XXX-XX

B
D

A
C
E

- A Product Code
- B Reflector
- C Electrical Component
- D Lamp
- E Color



Icon definition

*Due to the constancy of product development, we reserve the right to alter all specification without prior notice.

Unilamp Co., Ltd.
461 Ramintra Road, Kannayao, Bangkok 10230 Thailand
Tel : +66(0)2 943 2420-1, +66(0)2 946 4170-1
Fax : +66(0)2 943 2419
online@unilamp.co.th
www.unilamp.co.th

KRONOS

KRONOS – AREA LIGHT / ROAD OPTIC DOUBLE SIDED POLE MOUNTED LIGHT

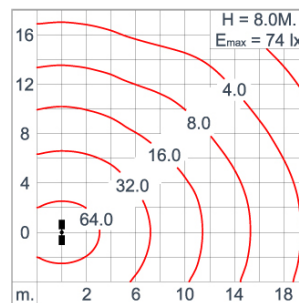
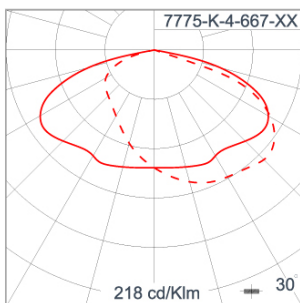


LAST UPDATE: 09-04-2026

Specification

IEC Standard	IEC 60598-1 General Requirement IEC 60598-2-1 Fixed Luminaires										
Protection	IP65 Class I										
IK Rating	Protection against mechanical impact IK08 on body and IK07 optical part.										
Luminaires Body Housing	High-pressure die cast aluminum alloy body and components.										
Coating Process	Nano Ceramic surface conversion, resistant to corrosive environment. Luminaire primarily coated with epoxy resin and top coated with UV stabilized polyester powder and cured in digital temperature controlled chamber at 200°C.										
Diffuser	Impact resistant safety tempered glass cover. Able to withstand the temperature up to 250°C.										
Lens	Molded PC lens from renowned manufacturers in various light distribution patterns.										
Adjustable Optic	Adjustable aiming unit through graduated scale.										
Gasket	Post-cured treated silicone gasket. Temperature and weather resistant. Working temperature -40°C to +200°C.										
External Screws	External screws are in stainless steel with protection grease.										
Cable Entry	Cable entry protected by M20 cable gland. To be used with H05RN-F/ H07RN-F cable with 7-13mm. diameter.										
Led	High efficiency LED module utilized chips from world renowned manufacturer. Assembled on MCPCB and mounted on to heat conductive material.										
Driver	High quality Dimmable Driver (1-10V) in constant current. Conform to applicable safety standards and electromagnetic compatibility.										
Internal Wire	Tinned copper conductor with silicone insulated internal wire. IMQ approved. Working temperature -40°C to +180°C.										
Terminal Block	Terminal block in GFR PA6.6 for cable with cross section up to 2.5 sqmm. VDE approved. Class1 luminaire provided with the earth connection.										
Pre-Wire Cable	Pre-wired with 5-core cable for power [3x1 sqmm.] and dimming signal [2x0.35 sqmm.].										
Caution	Installation work has to be carried on according to the enclosed installation manual.										
Color	<table><tr><td></td><td>Black O1</td></tr><tr><td></td><td>Graphite O2</td></tr><tr><td></td><td>Dark Grey O3</td></tr><tr><td></td><td>Aluminum Silver O4</td></tr><tr><td></td><td>White O6</td></tr></table>		Black O1		Graphite O2		Dark Grey O3		Aluminum Silver O4		White O6
	Black O1										
	Graphite O2										
	Dark Grey O3										
	Aluminum Silver O4										
	White O6										

Light Distribution



*Due to the constancy of product development,
we reserve the right to alter all specification
without prior notice.

Unilamp Co., Ltd.
461 Ramintra Road, Kannayao, Bangkok 10230 Thailand
Tel : +66[0]2 943 2420-1, +66[0]2 946 4170-1
Fax : +66[0]2 943 2419
online@unilamp.co.th
www.unilamp.co.th

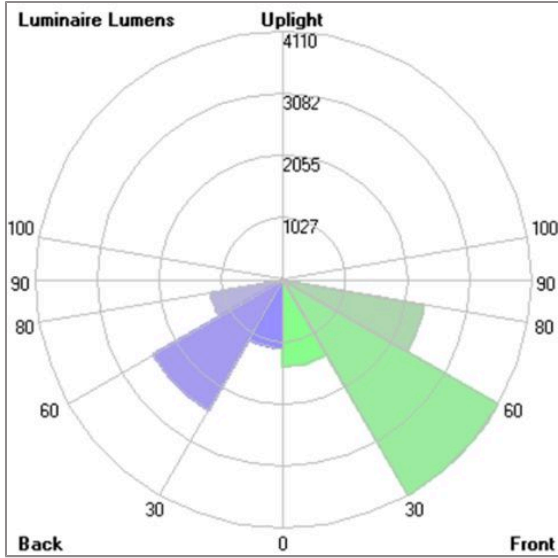
KRONOS

KRONOS – AREA LIGHT / ROAD OPTIC
 DOUBLE SIDED
 POLE MOUNTED LIGHT



LAST UPDATE: 09-04-2026

Bug Report



Lum. Classification System [LCS]				
LCS	Zone	%Lumens	%Lamp	%Lum
FL	[0-30]	1433.5	8.1	11.1
FM	[30-60]	4109.7	23.1	31.9
FH	[60-80]	2364.7	13.3	18.4
FVH	[80-90]	71.0	0.4	0.6
BL	[0-30]	1131.7	6.4	8.8
BM	[30-60]	2485.4	14.0	19.3
BH	[60-80]	1216.2	6.8	9.4
BVH	[80-90]	37.0	0.2	0.3
UL	[90-100]	4.3	0.0	0.0
UH	[100-180]	23.9	0.1	0.2
Total		12877.4	72.4	100.0
BUG Rating		B3-U2-G3		

*Due to the constancy of product development, we reserve the right to alter all specification without prior notice.

KRONOS

KRONOS – AREA LIGHT / ROAD OPTIC
DOUBLE SIDED
POLE MOUNTED LIGHT

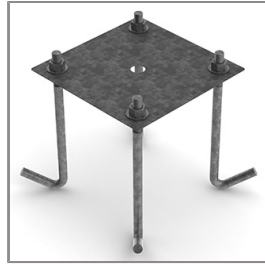


LAST UPDATE: 09-04-2026

Accessories



Ordering Code:
STEEL-POLE-FOR-KRONOS
Please contact Sales
Representative



Ordering Code:
AUN-ACB-0009-00
Anchor bolt kit, pole
diameter 114 and 114/140,
galvanized steel pole

*Due to the constancy of product development,
we reserve the right to alter all specification
without prior notice.

Unilamp Co., Ltd.
461 Ramintra Road, Kannayao, Bangkok 10230 Thailand
Tel : +66[0]2 943 2420-1, +66[0]2 946 4170-1
Fax : +66[0]2 943 2419
online@unilamp.co.th
www.unilamp.co.th