

# KRONOS

## KRONOS – AREA LIGHT / ROAD OPTIC DOUBLE SIDED

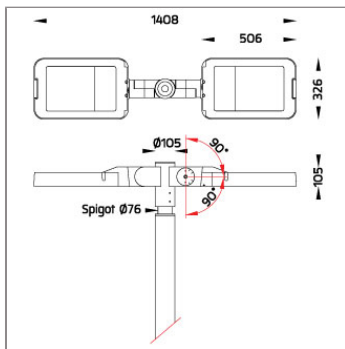
### AREA LIGHT



LAST UPDATE: 20-02-2024



A family of Area Light, Surface Washer and Architectural-Grade Flood Light in various mounting application KRONOS utilizes the latest LED technology from renowned manufacturers with high CRI in 3000K or 4000K. The high quality corrosion resistance aluminium housing is filmed with Nano Ceramic and coated with super durable powder. The heat management has been delicately designed and tested under ambient thermal condition Ta 50°C. A graduated scale provides accurate aiming of the luminaire. KRONOS offers various light distribution patterns e.g. Asymmetric Flat Beam [Road Optic] for USA, European, Middle East and Asia regulations, Asymmetric Forward Throw for squares and open spaces, as well as Narrow, Medium, Wide and Elliptical beams for floodlight and façade light applications.



### Technical Data



Ordering Code :	7775-J-4-668-XX
Lamp :	LED
Beam :	T3
CCT :	3000 K
CRI :	CRI >80
SDCM :	SDCM = 3
Lamp Lumen :	2x23040 lm
Luminaire Lumen :	35320 lm
Lamp Wattage :	2x127 W
Luminaire Wattage :	272 W
Efficacy :	129 lm/W
Ambient Temperature :	40°C
Lumen Maintenance	L70B10 >72,000 h
Controller :	DIM 1-10V
Input Voltage :	220-240Vac 50/60Hz
Net Weight :	15.60 kg.

### Ordering code guide

XXXX-X-X-XXX-XX  
A B C D E

- A Product Code
- B Reflector
- C Electrical Component
- D Lamp
- E Color



Icon definition

\*Due to the constancy of product development,  
we reserve the right to alter all specification  
without prior notice.

Unilamp Co., Ltd.  
461 Ramintra Road, Kannayao, Bangkok 10230 Thailand  
Tel : +66(0)2 943 2420-1, +66(0)2 946 4170-1  
Fax : +66(0)2 943 2419  
online@unilamp.co.th  
www.unilamp.co.th

# KRONOS

## KRONOS – AREA LIGHT / ROAD OPTIC DOUBLE SIDED

### AREA LIGHT

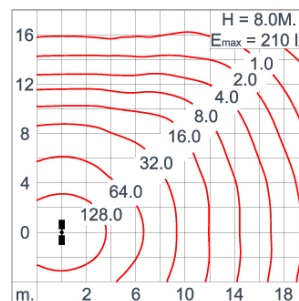
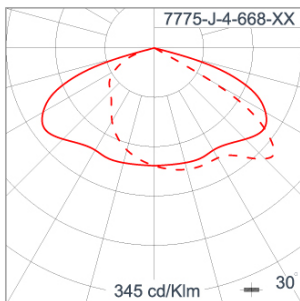


LAST UPDATE: 20-02-2024

### Specification

IEC Standard	IEC 60598-1 General Requirement IEC 60598-2-1 Fixed Luminaires												
Protection	IP65 Class I												
IK Rating	Protection against mechanical impact IK08 on body and IK07 optical part.												
Luminaires Body Housing	High-pressure Die Cast Aluminium alloy body and components.												
Coating Process	Nano Ceramic surface conversion, resistant to corrosive environment. Luminaire primarily coated with epoxy resin and top coated with UV stabilized polyester powder and cured in digital temperature controlled chamber at 200°C.												
Diffuser	Impact resistant safety tempered glass cover. Able to withstand the temperature up to 250°C.												
Lens	Molded PC lens from renowned manufacturers in various light distribution patterns.												
Adjustable Optic	Adjustable aiming unit through graduated scale.												
Gasket	Post-cured treated silicone gasket. Temperature and weather resistant. Working temperature -40°C to +200°C.												
External Screws	External screws are in stainless steel with protection grease.												
Cable Entry	Cable entry protected by M20 cable gland. To be used with H05RN-F/ H07RN-F cable with 7-13mm. diameter.												
Led	High efficiency LED module utilized chips from world renowned manufacturer. Assembled on MCPCB and mounted on to heat conductive material.												
Driver	High quality Dimmable Driver (1-10V) in constant current. Conform to applicable safety standards and electromagnetic compatibility.												
Internal Wire	Tinned copper conductor with silicone insulated internal wire. IMQ approved. Working temperature -40°C to +180°C.												
Terminal Block	Terminal block in GFR PA6.6 for cable with cross section up to 2.5 sqmm. VDE approved. Class1 luminaire provided with the earth connection.												
Pre-Wire Cable	Pre-wired with 5-core cable for power (3x1 sqmm.) and dimming signal (2x0.35 sqmm.).												
Caution	Installation work has to be carried on according to the enclosed installation manual.												
Color	<table><tr><td></td><td>Black 01</td></tr><tr><td></td><td>Graphite 02</td></tr><tr><td></td><td>Dark Grey 03</td></tr><tr><td></td><td>Aluminium Silver 04</td></tr><tr><td></td><td>White 06</td></tr><tr><td></td><td>Wooden Brown 07</td></tr></table>		Black 01		Graphite 02		Dark Grey 03		Aluminium Silver 04		White 06		Wooden Brown 07
	Black 01												
	Graphite 02												
	Dark Grey 03												
	Aluminium Silver 04												
	White 06												
	Wooden Brown 07												

### Light Distribution



\*Due to the constancy of product development,  
we reserve the right to alter all specification  
without prior notice.

Unilamp Co., Ltd.  
461 Ramintra Road, Kannayao, Bangkok 10230 Thailand  
Tel : +66(0)2 943 2420-1, +66(0)2 946 4170-1  
Fax : +66(0)2 943 2419  
online@unilamp.co.th  
www.unilamp.co.th

# KRONOS

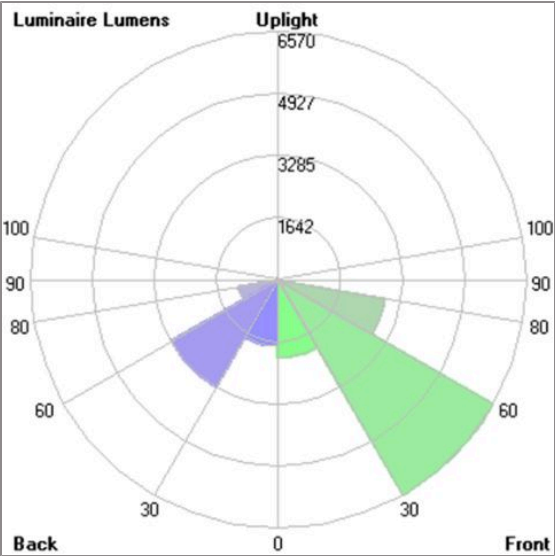
KRONOS – AREA LIGHT / ROAD OPTIC  
DOUBLE SIDED

AREA LIGHT



LAST UPDATE: 20-02-2024

## Bug Report



Lum. Classification System (LCS)				
LCS	Zone	%Lumens	%Lamp	%Lum
FL	[0-30]	2069.2	9.0	11.7
FM	[30-60]	6569.8	28.5	37.2
FH	[60-80]	2870.0	12.5	16.2
FVH	[80-90]	23.9	0.1	0.1
BL	[0-30]	1746.5	7.6	9.9
BM	[30-60]	3269.6	14.2	18.5
BH	[60-80]	1055.8	4.6	6.0
BVH	[80-90]	22.5	0.1	0.1
UL	[90-100]	6.1	0.0	0.0
UH	[100-180]	34.9	0.2	0.2
Total		17668.3	76.8	100.0
BUG Rating		B3-U2-G3		

\*Due to the constancy of product development,  
we reserve the right to alter all specification  
without prior notice.

# KRONOS

KRONOS – AREA LIGHT / ROAD OPTIC  
DOUBLE SIDED

AREA LIGHT

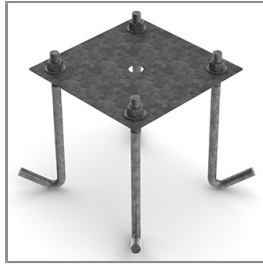


LAST UPDATE: 20-02-2024

## Accessories



Ordering Code:  
STEEL-POLE-FOR-KRONOS  
Please contact Sales  
Representative



Ordering Code:  
AUN-ACB-0009-00  
Anchor Bolt Kit for  
Galvanized Steel Pole. (for  
pole Diameter 114mm. and  
Diameter 114&140mm.)

\*Due to the constancy of product development,  
we reserve the right to alter all specification  
without prior notice.

Unilamp Co., Ltd.  
461 Ramintra Road, Kannayao, Bangkok 10230 Thailand  
Tel : +66[0]2 943 2420-1, +66[0]2 946 4170-1  
Fax : +66[0]2 943 2419  
online@unilamp.co.th  
www.unilamp.co.th