

PRIMUS

PRIMUS

POLE MOUNTED LIGHT



LAST UPDATE: 08-08-2025



The design of PRIMUS is inspired by urban furniture elements. The distinctive circular shape with or without uplight shield adds a playful architectural option for urban spaces, walkways, parks and plazas. The excellent luminaire performance creates pleasant glare free illumination suitable for most pedestrian and bicycle ways. The clear version of PRIMUS with CAD optimized lens array allows highly energy efficient lighting schemes with wide luminaire spacing. PRIMUS is suitable for pole diameters from 60mm to 76mm. The luminaire is equipped with a surge protection device and on request can be integrated in light management system by utilizing a Zhaga book 18 connector and DALI2 control gear.



Technical Data



Ordering Code :	7720-L-5-668-XX
Lamp :	LED
Beam :	T5
CCT :	3000 K
CRI :	CRI >80
SDCM :	SDCM = 3
Lamp Lumen :	12000 lm
Luminaire Lumen :	9740 lm
Lamp Wattage :	56 W
Luminaire Wattage :	67 W
Efficacy :	145 lm/W
Ambient Temperature :	50°C
Lumen Maintenance	L70B10 >60,000 h
Controller :	DALI
Input Voltage :	220-240Vac 50/60Hz
Net Weight :	6.40 kg.

Ordering code guide

XXXX-X-X-XXX-XX
A B C D E

A Product Code
B Reflector
C Electrical Component
D Lamp
E Color



Icon definition

*Due to the constancy of product development, we reserve the right to alter all specification without prior notice.

Unilamp Co., Ltd.
461 Ramintra Road, Kannayao, Bangkok 10230 Thailand
Tel : +66(0)2 943 2420-1, +66(0)2 946 4170-1
Fax : +66(0)2 943 2419
online@unilamp.co.th
www.unilamp.co.th

PRIMUS

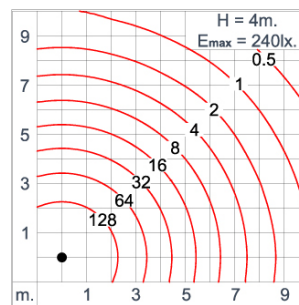
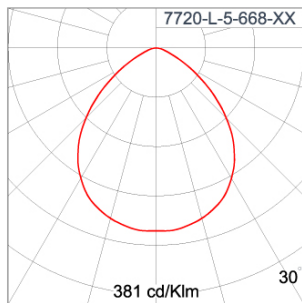
POLE MOUNTED LIGHT

LAST UPDATE: 08-08-2025

Specification

IEC Standard	IEC 60598-1 General Requirement IEC 60598-2-1 Fixed Luminaires
Protection	IP66 Class I
IK Rating	Protection against mechanical impact IK07 on body and IK09 optical part.
Luminaires Body Housing	High strength cast aluminum alloy component. Spun aluminum alloy component.
Coating Process	Nano Ceramic surface conversion, resistant to corrosive environment. Luminaire primarily coated with epoxy resin and top coated with UV stabilized polyester powder and cured in digital temperature controlled chamber at 200°C.
Diffuser	Self-extinguishing high impact resistant clear polycarbonate diffuser with UV stabilized additive.
Lens	Molded PC lens from renowned manufacturers in various light distribution patterns.
Gasket	Weather resistant silicone gasket. Working temperature -40°C to +200°C.
External Screws	External screws are in stainless steel with protection grease.
Cable Entry	Cable entry protected by M16 cable gland. To be used with HO5RN-F/ HO7RN-F cable with 5-10mm. diameter.
Led	High efficiency LED module utilized chips from world renowned manufacturer. Assembled on MCPCB and mounted on to heat conductive material.
Driver	High quality DALI Driver in constant current. Conform to applicable safety standards and electromagnetic compatibility.
Enhanced Protection	The luminaire is equipped with a 10kV surge protection device, the function of the protector is indicated by a LED, performance in compliance with IEC61643-11.
Internal Wire	Tinned copper conductor with silicone insulated internal wire. IMQ approved. Working temperature -40°C to +180°C.
Terminal Block	Assembled with quick connector for cable with cross section up to 2.5 sqmm. from ADELS or equivalents. VDE approved. Class1 luminaire provided with the earth connection.
Pre-Wire Cable	Pre-wired with 5-core cable for power (3x1 sqmm.) and dimming signal (2x1 sqmm.). Equipped with anti-humidity kit.
Caution	Installation work has to be carried on according to the enclosed installation manual.
Color	<div> <div>Black 01</div> <div>Graphite 02</div> <div>Dark Grey 03</div> <div>Aluminum Silver 04</div> <div>White 06</div> </div>

Light Distribution



PRIMUS

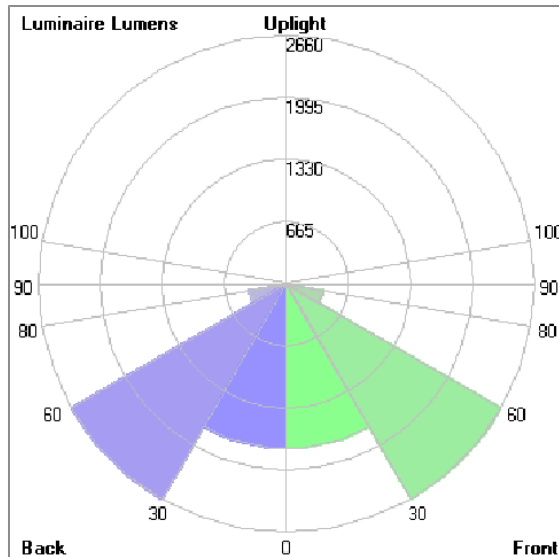
PRIMUS

POLE MOUNTED LIGHT



LAST UPDATE: 08-08-2025

Bug Report



Lum. Classification System (LCS)

LCS	Zone	%Lumens	%Lamp	%Lum
FL	[0-30]	1764.8	14.7	18.1
FM	[30-60]	2660.5	22.2	27.3
FH	[60-80]	401.1	3.3	4.1
FVH	[80-90]	28.6	0.2	0.3
BL	[0-30]	1764.8	14.7	18.1
BM	[30-60]	2660.5	22.2	27.3
BH	[60-80]	401.1	3.3	4.1
BVH	[80-90]	28.6	0.2	0.3
UL	[90-100]	8.0	0.1	0.1
UH	[100-180]	12.8	0.1	0.1
Total		9730.8	81.0	100.0
BUG Rating		B3-U2-G1		

*Due to the constancy of product development,
we reserve the right to alter all specification
without prior notice.

Unilamp Co., Ltd.
461 Ramintra Road, Kannayao, Bangkok 10230 Thailand
Tel : +66[0]2 943 2420-1, +66[0]2 946 4170-1
Fax : +66[0]2 943 2419
online@unilamp.co.th
www.unilamp.co.th

PRIMUS

PRIMUS

POLE MOUNTED LIGHT

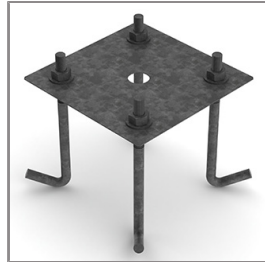


LAST UPDATE: 08-08-2025

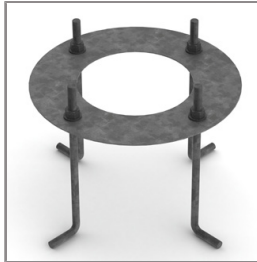
Accessories



Ordering Code:
AUN-ACB-0009-00
Anchor bolt kit, pole
diameter 114 and 114/140,
galvanized steel pole



Ordering Code:
AUN-ACB-0008-00
Anchor bolt kit, pole
diameter 102mm and
151x102mm, galvanized
steel pole



Ordering Code:
AUN-ACB-0005-00
Anchor bolt kit, aluminum
pole



Ordering Code:
ALUMINUM-POLE-FOR-PRIMUS
Please contact Sales
Representative



Ordering Code:
STEEL-POLE-FOR-PRIMUS
Please contact Sales
Representative

*Due to the constancy of product development,
we reserve the right to alter all specification
without prior notice.

Unilamp Co., Ltd.
461 Ramintra Road, Kannayao, Bangkok 10230 Thailand
Tel : +66[0]2 943 2420-1, +66[0]2 946 4170-1
Fax : +66[0]2 943 2419
online@unilamp.co.th
www.unilamp.co.th