

PRIMUS

PRIMUS

POLE MOUNTED

 **Unilamp**

LAST UPDATE: 18-06-2024



The design of PRIMUS is inspired by urban furniture elements. The distinctive circular shape with or without upright shield adds a playful architectural option for urban spaces, walkways, parks and plazas. The excellent luminaire performance creates pleasant glare free illumination suitable for most pedestrian and bicycle ways. The clear version of PRIMUS with CAD optimized lens array allows highly energy efficient lighting schemes with wide luminaire spacing. PRIMUS is suitable for pole diameters from $\varnothing 60\text{mm}$ to $\varnothing 76\text{mm}$. The luminaire is equipped with a surge protection device and on request can be integrated in light management system by utilizing a Zhaga book 18 connector and DALI2 control gear.



Technical Data



| | |
|-----------------------|--------------------|
| Ordering Code : | 7720-K-5-666-XX |
| Lamp : | LED |
| Beam : | T4 |
| CCT : | 3000 K |
| CRI : | CRI >80 |
| SDCM : | SDCM = 3 |
| Lamp Lumen : | 7500 lm |
| Luminaire Lumen : | 5270 lm |
| Lamp Wattage : | 35 W |
| Luminaire Wattage : | 44 W |
| Efficacy : | 119 lm/W |
| Ambient Temperature : | 50°C |
| Lumen Maintenance | L70B10 >60,000 h |
| Controller : | DALI |
| Input Voltage : | 220-240Vac 50/60Hz |
| Net Weight : | 6.40 kg. |

Ordering code guide

XXXX-X-X-XXX-XX
A B C D E

- A Product Code
- B Reflector
- C Electrical Component
- D Lamp
- E Color



Icon definition

*Due to the constancy of product development, we reserve the right to alter all specification without prior notice.

Unilamp Co., Ltd.
461 Ramintra Road, Kannayao, Bangkok 10230 Thailand
Tel : +66(O)2 943 2420-1, +66(O)2 946 4170-1
Fax : +66(O)2 943 2419
online@unilamp.co.th
www.unilamp.co.th

PRIMUS

PRIMUS

POLE MOUNTED

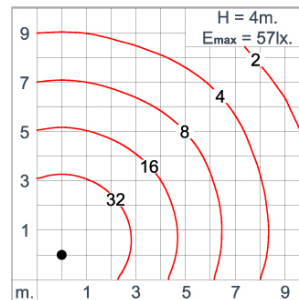
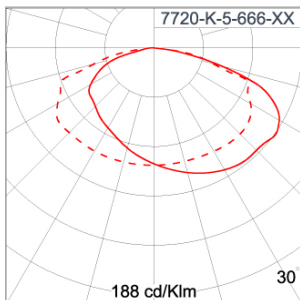


LAST UPDATE: 18-06-2024

Specification

| | | | | | | | | | | | | | |
|-------------------------|---|--|----------|--|-------------|--|--------------|--|--------------------|--|----------|--|-----------------|
| IEC Standard | IEC 60598-1 General Requirement IEC 60598-2-1 Fixed Luminaires | | | | | | | | | | | | |
| Protection | IP66 Class I | | | | | | | | | | | | |
| IK Rating | Protection against mechanical impact IK07 on body and IK09 optical part. | | | | | | | | | | | | |
| Luminaires Body Housing | High strength cast aluminum alloy component. Spun aluminum alloy component. | | | | | | | | | | | | |
| Coating Process | Nano Ceramic surface conversion, resistant to corrosive environment. Luminaire primarily coated with epoxy resin and top coated with UV stabilized polyester powder and cured in digital temperature controlled chamber at 200°C. | | | | | | | | | | | | |
| Diffuser | Self-extinguishing high impact resistant clear polycarbonate diffuser with UV stabilized additive. | | | | | | | | | | | | |
| Lens | Molded PC lens from renowned manufacturers in various light distribution patterns. | | | | | | | | | | | | |
| Gasket | Weather resistant silicone gasket. Working temperature -40°C to +200°C. | | | | | | | | | | | | |
| External Screws | External screws are in stainless steel with protection grease. | | | | | | | | | | | | |
| Cable Entry | Cable entry protected by M16 cable gland. To be used with HO5RN-F/ HO7RN-F cable with 5-10mm. diameter. | | | | | | | | | | | | |
| Led | High efficiency LED module utilized chips from world renowned manufacturer. Assembled on MCPCB and mounted on to heat conductive material. | | | | | | | | | | | | |
| Driver | High quality DALI Driver in constant current. Conform to applicable safety standards and electromagnetic compatibility. | | | | | | | | | | | | |
| Enhanced Protection | The luminaire is equipped with a 10kV surge protection device, the function of the protector is indicated by a LED, performance in compliance with IEC61643-11. | | | | | | | | | | | | |
| Internal Wire | Tinned copper conductor with silicone insulated internal wire. IMQ approved. Working temperature -40°C to +180°C. | | | | | | | | | | | | |
| Terminal Block | Assembled with quick connector for cable with cross section up to 2.5 sqmm. from ADELS or equivalents. VDE approved. Class1 luminaire provided with the earth connection. | | | | | | | | | | | | |
| Pre-Wire Cable | Pre-wired with 5-core cable for power (3x1 sqmm.) and dimming signal (2x1 sqmm.). Equipped with anti-humidity kit. | | | | | | | | | | | | |
| Caution | Installation work has to be carried on according to the enclosed installation manual. | | | | | | | | | | | | |
| Color | <table><tr><td></td><td>Black O1</td></tr><tr><td></td><td>Graphite O2</td></tr><tr><td></td><td>Dark Grey O3</td></tr><tr><td></td><td>Aluminum Silver O4</td></tr><tr><td></td><td>White O6</td></tr><tr><td></td><td>Wooden Brown O7</td></tr></table> | | Black O1 | | Graphite O2 | | Dark Grey O3 | | Aluminum Silver O4 | | White O6 | | Wooden Brown O7 |
| | Black O1 | | | | | | | | | | | | |
| | Graphite O2 | | | | | | | | | | | | |
| | Dark Grey O3 | | | | | | | | | | | | |
| | Aluminum Silver O4 | | | | | | | | | | | | |
| | White O6 | | | | | | | | | | | | |
| | Wooden Brown O7 | | | | | | | | | | | | |

Light Distribution



*Due to the constancy of product development, we reserve the right to alter all specification without prior notice.

Unilamp Co., Ltd.
461 Ramintra Road, Kannayao, Bangkok 10230 Thailand
Tel : +66(O)2 943 2420-1, +66(O)2 946 4170-1
Fax : +66(O)2 943 2419
online@unilamp.co.th
www.unilamp.co.th

PRIMUS

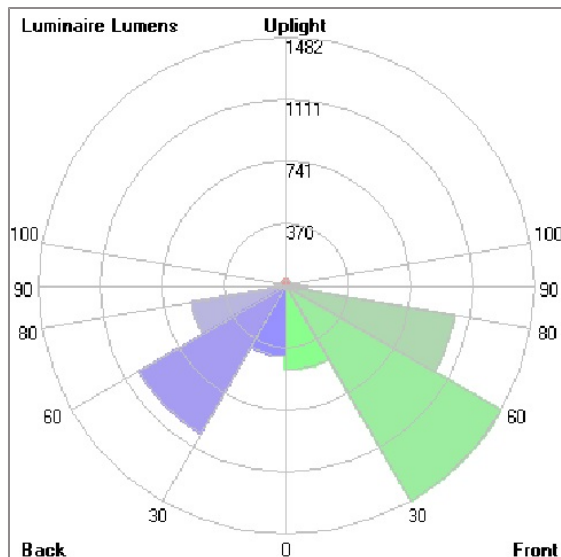
PRIMUS

POLE MOUNTED



LAST UPDATE: 18-06-2024

Bug Report



Lum. Classification System [LCS]

| LCS | Zone | %Lumens | %Lamp | %Lum |
|------------|-----------|----------|-------|-------|
| FL | [0-30] | 505.0 | 6.7 | 9.6 |
| FM | [30-60] | 1481.7 | 19.8 | 28.1 |
| FH | [60-80] | 1022.2 | 13.6 | 19.4 |
| FVH | [80-90] | 126.9 | 1.7 | 2.4 |
| BL | [0-30] | 421.6 | 5.6 | 8.0 |
| BM | [30-60] | 1016.5 | 13.6 | 19.3 |
| BH | [60-80] | 573.5 | 7.6 | 10.9 |
| BVH | [80-90] | 64.8 | 0.9 | 1.2 |
| UL | [90-100] | 25.3 | 0.3 | 0.5 |
| UH | [100-180] | 32.1 | 0.4 | 0.6 |
| Total | | 5269.6 | 70.2 | 100.0 |
| BUG Rating | | B2-U2-G2 | | |

*Due to the constancy of product development, we reserve the right to alter all specification without prior notice.

Unilamp Co., Ltd.
461 Ramintra Road, Kannayao, Bangkok 10230 Thailand
Tel : +66[0]2 943 2420-1, +66[0]2 946 4170-1
Fax : +66[0]2 943 2419
online@unilamp.co.th
www.unilamp.co.th

PRIMUS

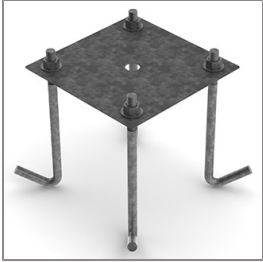
PRIMUS

POLE MOUNTED

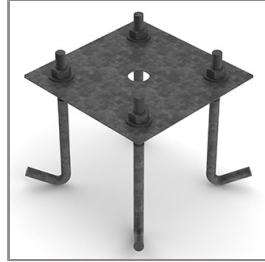


LAST UPDATE: 18-06-2024

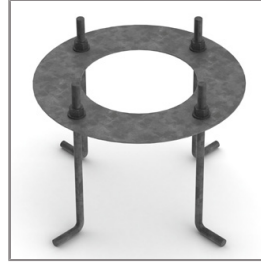
Accessories



Ordering Code:
AUN-ACB-0009-00
Anchor bolt kit, pole
diameter 114 and 114/140,
galvanized steel pole



Ordering Code:
AUN-ACB-0008-00
Anchor bolt kit, pole
diameter 102mm and
151x102mm, galvanized
steel pole



Ordering Code:
AUN-ACB-0005-00
Anchor bolt kit, aluminum
pole



Ordering Code:
ALUMINUM-POLE-FOR-PRIMUS
Please contact Sales
Representative



Ordering Code:
STEEL-POLE-FOR-PRIMUS
Please contact Sales
Representative

*Due to the constancy of product development,
we reserve the right to alter all specification
without prior notice.

Unilamp Co., Ltd.
461 Ramintra Road, Kannayao, Bangkok 10230 Thailand
Tel : +66[0]2 943 2420-1, +66[0]2 946 4170-1
Fax : +66[0]2 943 2419
online@unilamp.co.th
www.unilamp.co.th