

EQUINOX

NEO EQUINOX – DS

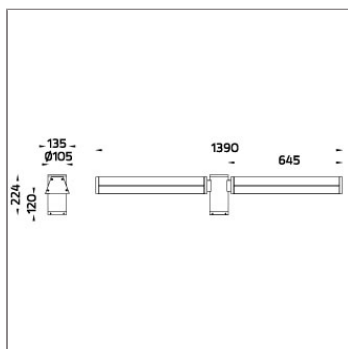
POLE MOUNTED LIGHT



LAST UPDATE: 24-02-2025



EQUINOX is the trapezium-shaped linear light fixture for residential community, commercial area and public space. It is operated with the LED light source with high CRI and 3-step SDCM. It can be used on a pole as a pole top luminaire or with a clamping unit at different height. A wall mounted version for area light application is also available. With high quality LED in 3000K and 4000K EQUINOX is an economical luminaire that provides general illumination with excellent lighting levels. The exceptional lens system distributes the light efficiently onto the surfaces. Aluminium Poles, Galvanized steel poles and anchorage unit for concrete foundations are available as accessories.



Technical Data



Ordering Code :	7718-E-4-667-XX
Lamp :	LED
Beam :	90°
CCT :	4000 K
CRI :	CRI >80
SDCM :	SDCM = 3
Lamp Lumen :	2x6080 lm
Luminaire Lumen :	9880 lm
Lamp Wattage :	2x32 W
Luminaire Wattage :	72 W
Efficacy :	137 lm/W
Ambient Temperature :	40°C
Lumen Maintenance	L80B10 >70,000 h
Controller :	DIM 1-10V
Input Voltage :	220-240Vac 50/60Hz
Net Weight :	12.00 kg.

Ordering code guide

XXXX-X-X-XXX-XX
A B C D E

- A Product Code
- B Reflector
- C Electrical Component
- D Lamp
- E Color



Icon definition

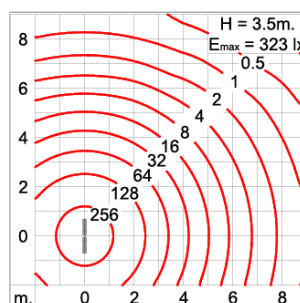
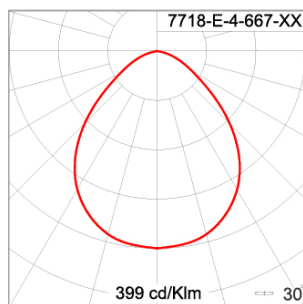
*Due to the constancy of product development, we reserve the right to alter all specification without prior notice.

Unilamp Co., Ltd.
461 Ramintra Road, Kannayao, Bangkok 10230 Thailand
Tel : +66(0)2 943 2420-1, +66(0)2 946 4170-1
Fax : +66(0)2 943 2419
online@unilamp.co.th
www.unilamp.co.th

Specification

IEC Standard	IEC 60598-1 General Requirement IEC 60598-2-1 Fixed Luminaires
Protection	IP66 Class I
IK Rating	Protection against mechanical impact IK08 on body and IK07 optical part.
Luminaires Body Housing	High-pressure die cast aluminum alloy body and components. Extruded aluminum 6063 alloy body with low copper content.
Coating Process	Nano Ceramic surface conversion, resistant to corrosive environment. Luminaire primarily coated with epoxy resin and top coated with UV stabilized polyester powder and cured in digital temperature controlled chamber at 200°C.
Diffuser	Impact resistant safety tempered glass cover. Able to withstand the temperature up to 250°C.
Lens	Molded PC lens from renowned manufacturers in various light distribution patterns.
Gasket	Post-cured treated silicone gasket. Temperature and weather resistant. Working temperature -40°C to +200°C.
External Screws	External screws are in stainless steel with protection grease.
Cable Entry	Cable entry protected by weather proof grommet. To be used with HO5RN-F/ HO7RN-F cable with 6-13mm. diameter.
Led	High efficiency LED module utilized chips from world renowned manufacturer. Assembled on MCPCB and mounted on to heat conductive material.
Driver	High quality Dimmable Driver (1-10V) in constant current. Conform to applicable safety standards and electromagnetic compatibility.
Enhanced Protection	The luminaire is equipped with a 10kV surge protection device, the function of the protector is indicated by a LED, performance in compliance with IEC61643-11.
Internal Wire	Tinned copper conductor with silicone insulated internal wire. IMQ approved. Working temperature -40°C to +180°C.
Terminal Block	Terminal block in GFR PA6.6 for cable with cross section up to 2.5 sqmm. VDE approved.
Pre-Wire Cable	Pre-wired with 5-core cable for power (3x1 sqmm.) and dimming signal (2x0.35 sqmm.).
Caution	Installation work has to be carried on according to the enclosed installation manual.
Color	<div> <div>Black O1</div> <div>Graphite O2</div> <div>Dark Grey O3</div> <div>Aluminum Silver O4</div> <div>White O6</div> </div>

Light Distribution



EQUINOX

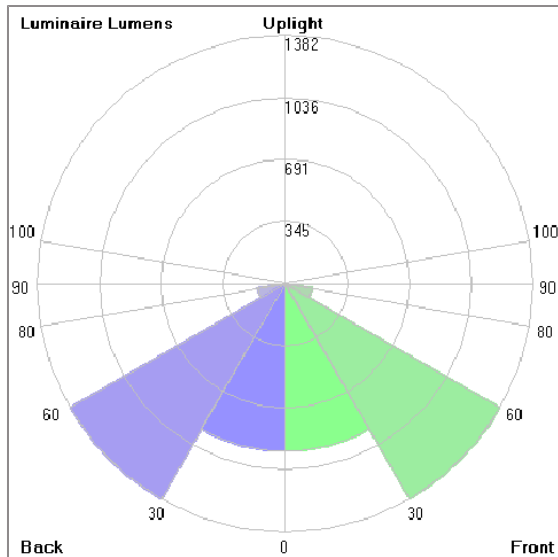
NEO EQUINOX – DS

POLE MOUNTED LIGHT



LAST UPDATE: 24-02-2025

Bug Report



Lum. Classification System (LCS)

LCS	Zone	%Lumens	%Lamp	%Lum
FL	[0-30]	932.5	15.3	18.9
FM	[30-60]	1381.6	22.7	28.0
FH	[60-80]	152.3	2.5	3.1
FVH	[80-90]	3.0	0.0	0.1
BL	[0-30]	932.5	15.3	18.9
BM	[30-60]	1381.6	22.7	28.0
BH	[60-80]	152.3	2.5	3.1
BVH	[80-90]	3.0	0.0	0.1
UL	[90-100]	0.0	0.0	0.0
UH	[100-180]	0.9	0.0	0.0
Total		4939.7	81.0	100.0
BUG Rating		B2-U1-G0		

*Due to the constancy of product development,
we reserve the right to alter all specification
without prior notice.

Unilamp Co., Ltd.
461 Ramintra Road, Kannayao, Bangkok 10230 Thailand
Tel : +66[0]2 943 2420-1, +66[0]2 946 4170-1
Fax : +66[0]2 943 2419
online@unilamp.co.th
www.unilamp.co.th

EQUINOX

NEO EQUINOX – DS

POLE MOUNTED LIGHT

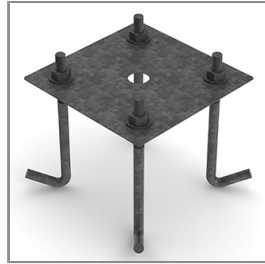


LAST UPDATE: 24-02-2025

Accessories



Ordering Code:
AUN-ACB-0009-00
Anchor bolt kit, pole
diameter 114 and 114/140,
galvanized steel pole



Ordering Code:
AUN-ACB-0008-00
Anchor bolt kit, pole
diameter 102mm and
151x102mm, galvanized
steel pole



Ordering Code:
AUN-ACB-0005-00
Anchor bolt kit, aluminum
pole



Ordering Code:
ALUMINUM-POLE-NEO-EQUINOX-POLE-TOP
Please contact Sales
Representative



Ordering Code:
STEEL-POLE-NEO-EQUINOX-POLE-TOP
Please contact Sales
Representative

*Due to the constancy of product development,
we reserve the right to alter all specification
without prior notice.

Unilamp Co., Ltd.
461 Ramintra Road, Kannayao, Bangkok 10230 Thailand
Tel : +66[0]2 943 2420-1, +66[0]2 946 4170-1
Fax : +66[0]2 943 2419
online@unilamp.co.th
www.unilamp.co.th