

STICK

STICK

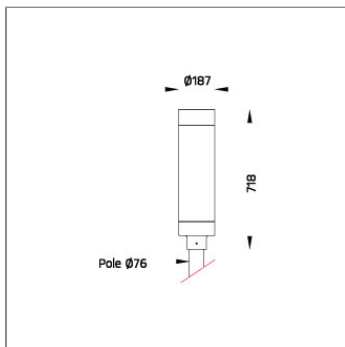
POLE MOUNTED LIGHT



LAST UPDATE: 03-03-2025



STICK is cylindrical-shaped light column with symmetrical / asymmetrical light distribution. The LED light source in combination with a unique 250 degree wide spread lens provides uniform light. It is available with the choices of three different color temperatures from 2700K, 3000K or 4000K in high color consistency and remarkable color rendering index. STICK with HID light source and E27 holder for retrofit lamps are also available. The internal glare suppression louver improves the lighting quality by limiting the upward light emission. STICK is generally installed in the walkways, gardens, parks, commercial areas and open spaces to provide the general lighting from mid-high level. The recommended mounting height is between 3 – 4 meters above the ground. STICK Direct is an evolution of the existing STICK product line. The cylindrical shaped luminaire is available with symmetric or asymmetric light distribution. The efficacy of STICK has been improved to at least 120lm/W and virtually uplight free. The ambient temperature is rated up to 50°C. STICK direct is available as light column or pole-top light. This makes STICK direct a great choice for new installations and site upgrades.



Technical Data



Ordering Code :	7269-M-A-668-XX
Lamp :	LED
Beam :	T5
CCT :	3000 K
CRI :	CRI >80
SDCM :	SDCM = 3
Lamp Lumen :	4220 lm
Luminaire Lumen :	3310 lm
Lamp Wattage :	23 W
Luminaire Wattage :	26 W
Efficacy :	127 lm/W
Ambient Temperature :	50°C
Lumen Maintenance	L70B10 >72,000 h
Controller :	CASAMBI
Input Voltage :	220-240Vac 50/60Hz
Net Weight :	5.80 kg.

Ordering code guide

XXXX-X-X-XXX-XX
A B C D E

A Product Code
B Reflector
C Electrical Component
D Lamp
E Color



Icon definition

*Due to the constancy of product development, we reserve the right to alter all specification without prior notice.

Unilamp Co., Ltd.
461 Ramintra Road, Kannayao, Bangkok 10230 Thailand
Tel : +66(0)2 943 2420-1, +66(0)2 946 4170-1
Fax : +66(0)2 943 2419
online@unilamp.co.th
www.unilamp.co.th

STICK

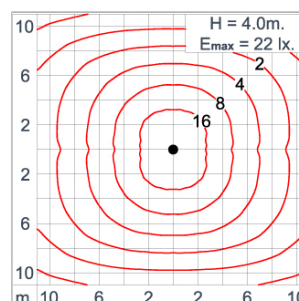
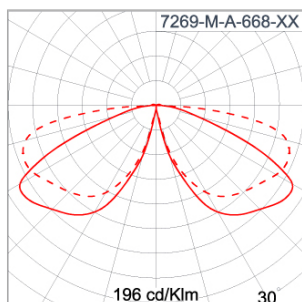
POLE MOUNTED LIGHT

LAST UPDATE: 03-03-2025

Specification

IEC Standard	IEC 60598-1 General Requirement IEC 60598-2-1 Fixed Luminares
Protection	IP66 Class I
IK Rating	Protection against mechanical impact IK10 on body and optical part.
Luminares Body Housing	High strength cast aluminum alloy component.
Coating Process	Nano ceramic surface conversion, resistant to corrosive environment. Luminaire primarily coated with epoxy resin and top coated with UV stabilized polyester powder and cured in digital temperature controlled chamber at 200°C.
Diffuser	Weather resistant extruded polycarbonate with UV stabilized additive cover.
Lens	Molded PC lens from renowned manufacturers in various light distribution patterns.
Gasket	Post-cured treated silicone gasket. Temperature and weather resistant. Working temperature -40°C to +200°C.
External Screws	External screws are in stainless steel with protection grease.
Cable Entry	Cable entry protected by M20 cable gland. To be used with H05RN-F/ H07RN-F cable with 7-13mm. diameter.
Led	High efficiency LED module utilized chips from world renowned manufacturer. Assembled on MCPCB and mounted on to heat conductive material.
Driver	High quality CASAMBI controllable LED driver with constant current output. Conform to applicable safety standards and electromagnetic compatibility.
Enhanced Protection	The luminaire is equipped with a 10kV surge protection device, the function of the protector is indicated by a LED, performance in compliance with IEC61643-11.
Internal Wire	Tinned copper conductor with silicone insulated internal wire. IMQ approved. Working temperature -40°C to +180°C.
Terminal Block	Assembled with quick connector for cable with cross section up to 2.5 sqmm. from ADELS or equivalents. VDE approved. Class1 luminaire provided with the earth connection.
Pre-Wire Cable	Pre-wired with 3x1.0 sqmm. H07RN-F neoprene cable. IMQ approved.
Caution	Installation work has to be carried on according to the enclosed installation manual.
Color	<div> <div></div> Black 01 <div></div> Graphite 02 <div></div> Dark Grey 03 <div></div> Aluminum Silver 04 <div></div> White 06 </div>

Light Distribution



STICK

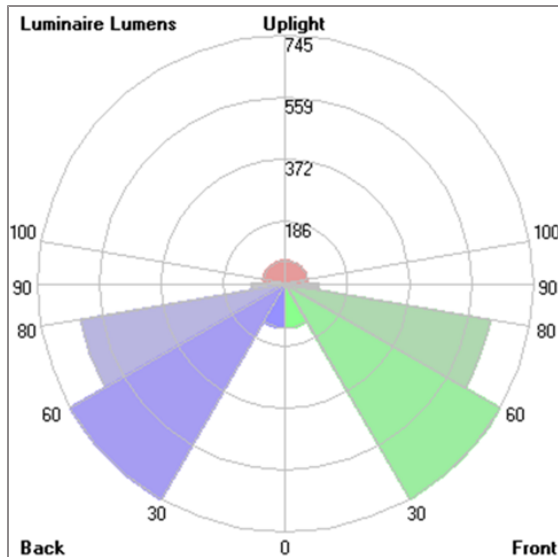
STICK

POLE MOUNTED LIGHT



LAST UPDATE: 03-03-2025

Bug Report



Lum. Classification System (LCS)

LCS	Zone	%Lumens	%Lamp	%Lum
FL	[0-30]	132.5	3.1	4.0
FM	[30-60]	744.9	17.7	22.5
FH	[60-80]	623.0	14.8	18.8
FVH	[80-90]	99.5	2.4	3.0
BL	[0-30]	132.5	3.1	4.0
BM	[30-60]	744.9	17.7	22.5
BH	[60-80]	623.0	14.8	18.8
BVH	[80-90]	99.5	2.4	3.0
UL	[90-100]	41.9	1.0	1.3
UH	[100-180]	67.6	1.6	2.0
Total		3309.3	78.6	100.0
BUG Rating		B2-U3-G1		

*Due to the constancy of product development,
we reserve the right to alter all specification
without prior notice.

Unilamp Co., Ltd.
461 Ramintra Road, Kannayao, Bangkok 10230 Thailand
Tel : +66[0]2 943 2420-1, +66[0]2 946 4170-1
Fax : +66[0]2 943 2419
online@unilamp.co.th
www.unilamp.co.th

STICK

STICK

POLE MOUNTED LIGHT



LAST UPDATE: 03-03-2025

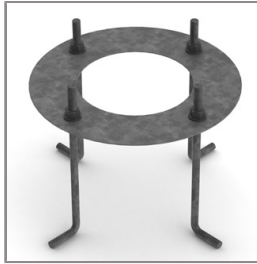
Accessories



Ordering Code:
AUN-ACB-0009-00
Anchor bolt kit, pole
diameter 114 and 114/140,
galvanized steel pole



Ordering Code:
AUN-ACB-0008-00
Anchor bolt kit, pole
diameter 102mm and
151x102mm, galvanized
steel pole



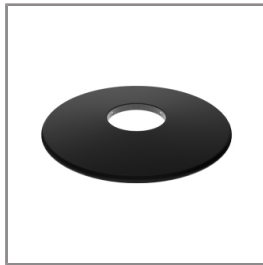
Ordering Code:
AUN-ACB-0005-00
Anchor bolt kit, aluminum
pole



Ordering Code:
ALUMINUM-POLE-STICK-DIRECT-POLE-TOP
Please contact Sales
Representative



Ordering Code:
STEEL-POLE-STICK-DIRECT-POLE-TOP
Please contact Sales
Representative



Ordering Code:
AUN-GSH-0052-XX
Uplight shield cover

*Due to the constancy of product development,
we reserve the right to alter all specification
without prior notice.

Unilamp Co., Ltd.
461 Ramintra Road, Kannayao, Bangkok 10230 Thailand
Tel : +66[0]2 943 2420-1, +66[0]2 946 4170-1
Fax : +66[0]2 943 2419
online@unilamp.co.th
www.unilamp.co.th