

STICK

STICK DIRECT – POLE TOP LIGHT

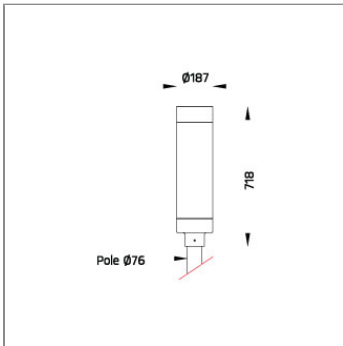
POLE LIGHT & POLE TOP LIGHT



LAST UPDATE: 09-11-2023



STICK is cylindrical-shaped light column with symmetrical light distribution. The LED light source in combination with a unique 250 degree wide spread lens provides uniform light. It is available with the choices of three different color temperatures from 2700K, 3000K or 4000K in high color consistency and remarkable color rendering index. STICK with HID light source and E27 holder for retrofit lamps are also available. The internal glare suppression louver improves the lighting quality by limiting the upward light emission. STICK is generally installed in the walkways, gardens, parks, commercial areas and open spaces to provide the general lighting from mid-high level. The recommended mounting height is between 3 – 4 meters above the ground. STICK Direct is an evolution of the existing STICK product line. The cylindrical shaped luminaire is available with symmetric or asymmetric light distribution. The efficacy of STICK has been improved to at least 120lm/W and virtually uplight free. The ambient temperature is rated up to 50°C. STICK direct is available as light column or pole-top light. This makes STICK direct a great choice for new installations and site upgrades.



Technical Data



| | |
|-----------------------|--------------------|
| Ordering Code : | 7269-L-3-669-XX |
| Lamp : | LED |
| Beam : | T5 |
| CCT : | 4000 K |
| CRI : | CRI >80 |
| SDCM : | SDCM = 3 |
| Lamp Lumen : | 4440 lm |
| Luminaire Lumen : | 3260 lm |
| Lamp Wattage : | 23 W |
| Luminaire Wattage : | 26 W |
| Efficacy : | 125 lm/W |
| Ambient Temperature : | 50°C |
| Lumen Maintenance | L70B10 >72,000 h |
| Controller : | On-Off |
| Input Voltage : | 220-240Vac 50/60Hz |
| Net Weight : | 6.00 kg. |

Ordering code guide

XXXX-X-X-XXX-XX
A B C D E

A Product Code
B Reflector
C Electrical Component
D Lamp
E Color



Icon definition

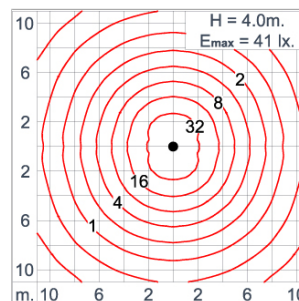
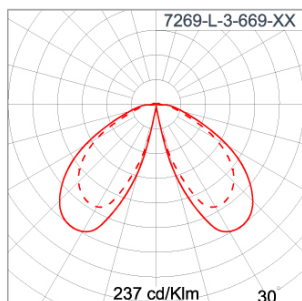
*Due to the constancy of product development,
we reserve the right to alter all specification
without prior notice.

Unilamp Co., Ltd.
461 Ramintra Road, Kannayao, Bangkok 10230 Thailand
Tel : +66(0)2 943 2420-1, +66(0)2 946 4170-1
Fax : +66(0)2 943 2419
online@unilamp.co.th
www.unilamp.co.th

Specification

| | |
|-------------------------|---|
| IEC Standard | IEC 60598-1 General Requirement IEC 60598-2-1 Fixed Luminaires |
| Protection | IP66 Class I |
| IK Rating | Protection against mechanical impact IK10 on body and optical part. |
| Luminaires Body Housing | High Strength Cast Aluminium alloy component. |
| Coating Process | Nano Ceramic surface conversion, resistant to corrosive environment. Luminaire primarily coated with epoxy resin and top coated with UV stabilized polyester powder and cured in digital temperature controlled chamber at 200°C. |
| Diffuser | Weather resistant extruded polycarbonate with UV stabilized additive cover. |
| Lens | Molded PC lens from renowned manufacturers in various light distribution patterns. |
| Gasket | Post-cured treated silicone gasket. Temperature and weather resistant. Working temperature -40°C to +200°C. |
| External Screws | External screws are in stainless steel with protection grease. |
| Cable Entry | Cable entry protected by M20 cable gland. To be used with H05RN-F/ H07RN-F cable with 7-13mm. diameter. |
| Led | High efficiency LED module utilized chips from world renowned manufacturer. Assembled on MCPCB and mounted on to heat conductive material. |
| Driver | High quality constant current LED driver. Conform to safety standard and electromagnetic compatibility standard. |
| Enhanced Protection | The luminaire is equipped with a 10kV surge protection device, the function of the protector is indicated by a LED, performance in compliance with IEC61643-11. |
| Internal Wire | Tinned copper conductor with silicone insulated internal wire. IMQ approved. Working temperature -40°C to +180°C. |
| Terminal Block | Assembled with quick connector for cable with cross section up to 2.5 sqmm. from ADELS or equivalents. VDE approved. Class1 luminaire provided with the earth connection. |
| Pre-Wire Cable | Pre-wired with 3x1.0 sqmm. H07RN-F neoprene cable. IMQ approved. |
| Caution | Installation work has to be carried on according to the enclosed installation manual. |
| Color | <div> <div>Black 01</div> <div>Graphite 02</div> <div>Dark Grey 03</div> <div>Aluminium Silver 04</div> <div>White 06</div> <div>Wooden Brown 07</div> </div> |

Light Distribution



STICK

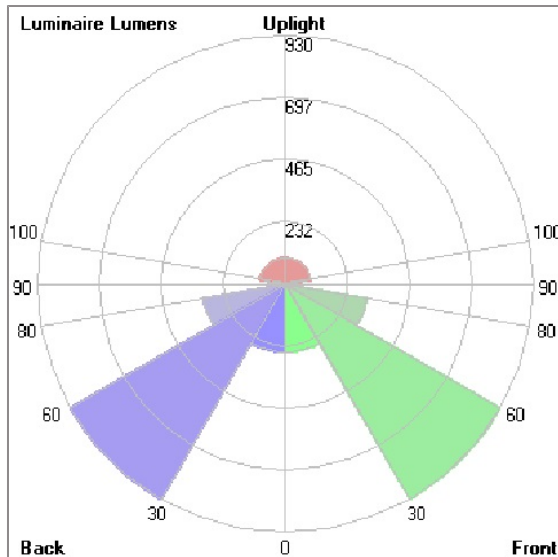
STICK DIRECT – POLE TOP LIGHT

POLE LIGHT & POLE TOP LIGHT



LAST UPDATE: 09-11-2023

Bug Report



Lum. Classification System (LCS)

| LCS | Zone | %Lumens | %Lamp | %Lum |
|------------|-----------|----------|-------|-------|
| FL | [0-30] | 256.3 | 5.8 | 7.9 |
| FM | [30-60] | 930.0 | 20.9 | 28.5 |
| FH | [60-80] | 311.3 | 7.0 | 9.5 |
| FVH | [80-90] | 59.2 | 1.3 | 1.8 |
| BL | [0-30] | 256.3 | 5.8 | 7.9 |
| BM | [30-60] | 930.0 | 20.9 | 28.5 |
| BH | [60-80] | 311.3 | 7.0 | 9.5 |
| BVH | [80-90] | 59.2 | 1.3 | 1.8 |
| UL | [90-100] | 51.2 | 1.2 | 1.6 |
| UH | [100-180] | 95.6 | 2.2 | 2.9 |
| Total | | 3260.4 | 73.4 | 100.0 |
| BUG Rating | | B1-U3-G1 | | |

*Due to the constancy of product development,
we reserve the right to alter all specification
without prior notice.

Unilamp Co., Ltd.
461 Ramintra Road, Kannayao, Bangkok 10230 Thailand
Tel : +66[0]2 943 2420-1, +66[0]2 946 4170-1
Fax : +66[0]2 943 2419
online@unilamp.co.th
www.unilamp.co.th

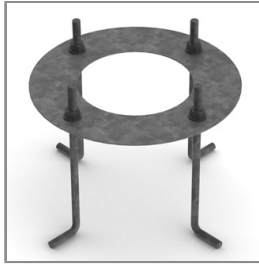
Accessories



Ordering Code:
AUN-ACB-0009-00
Anchor Bolt Kit for
Galvanized Steel Pole. (for
pole Diameter 114mm. and
Diameter 114&140mm.)



Ordering Code:
AUN-ACB-0008-00
Anchor Bolt Kit for
Galvanized Steel Pole. (for
Diameter 102mm. and
151x102mm.)



Ordering Code:
AUN-ACB-0005-00
Anchor Bolt Kit for
Aluminium Pole



Ordering Code:
ALUMINIUM-POLE-STICK-DIRECT-POLE-TOP
Please contact Sales
Representative



Ordering Code:
STEEL-POLE-STICK-DIRECT-POLE-TOP
Please contact Sales
Representative