

# STICK

## STICK

### LIGHT COLUMN



LAST UPDATE: 03-03-2025



STICK is cylindrical-shaped light column with symmetrical / asymmetrical light distribution. The LED light source in combination with a unique 250 degree wide spread lens provides uniform light. It is available with the choices of three different color temperatures from 2700K, 3000K or 4000K in high color consistency and remarkable color rendering index. STICK with HID light source and E27 holder for retrofit lamps are also available. The internal glare suppression louver improves the lighting quality by limiting the upward light emission. STICK is generally installed in the walkways, gardens, parks, commercial areas and open spaces to provide the general lighting from mid-high level. The recommended mounting height is between 3 – 4 meters above the ground. STICK Direct is an evolution of the existing STICK product line. The cylindrical shaped luminaire is available with symmetric or asymmetric light distribution. The efficacy of STICK has been improved to at least 120lm/W and virtually upright free. The ambient temperature is rated up to 50°C. STICK direct is available as light column or pole-top light. This makes STICK direct a great choice for new installations and site upgrades.



## Technical Data



Ordering Code :	7268-V-4-666-XX
Lamp :	LED
Beam :	T1
CCT :	3000 K
CRI :	CRI >80
SDCM :	SDCM = 3
Lamp Lumen :	5760 lm
Luminaire Lumen :	4370 lm
Lamp Wattage :	32 W
Luminaire Wattage :	36 W
Efficacy :	121 lm/W
Ambient Temperature :	50°C
Lumen Maintenance	L70B10 >72,000 h
Controller :	DIM 1-10V
Input Voltage :	220-240Vac 50/60Hz
Net Weight :	- kg.

### Ordering code guide

XXXX-X-X-XXX-XX  
A B C D E

- A Product Code
- B Reflector
- C Electrical Component
- D Lamp
- E Color



Icon definition

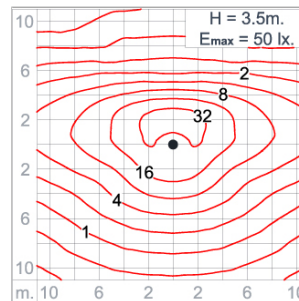
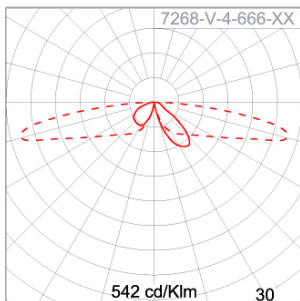
\*Due to the constancy of product development, we reserve the right to alter all specification without prior notice.

Unilamp Co., Ltd.  
461 Ramintra Road, Kannayao, Bangkok 10230 Thailand  
Tel : +66(0)2 943 2420-1, +66(0)2 946 4170-1  
Fax : +66(0)2 943 2419  
online@unilamp.co.th  
www.unilamp.co.th

### Specification

IEC Standard	IEC 60598-1 General Requirement IEC 60598-2-1 Fixed Luminaires										
Protection	IP66 Class I										
IK Rating	Protection against mechanical impact IK10 on body and optical part.										
Luminaires Body Housing	High-pressure die cast aluminum alloy body and components. Extruded aluminum 56063 alloy body with low copper content. High strength cast aluminum alloy component.										
Coating Process	Nano ceramic surface conversion, resistant to corrosive environment. Luminaire primarily coated with epoxy resin and top coated with UV stabilized polyester powder and cured in digital temperature controlled chamber at 200°C.										
Diffuser	Weather resistant extruded polycarbonate with UV stabilized additive cover.										
Lens	Molded PC lens from renowned manufacturers in various light distribution patterns.										
Gasket	Post-cured treated silicone gasket. Temperature and weather resistant. Working temperature -40°C to +200°C.										
External Screws	External screws are in stainless steel with protection grease.										
Led	High efficiency LED module utilized chips from world renowned manufacturer. Assembled on MCPCB and mounted on to heat conductive material.										
Driver	High quality Dimmable Driver (1-10V) in constant current. Conform to applicable safety standards and electromagnetic compatibility.										
Enhanced Protection	The luminaire is equipped with a 10kV surge protection device, the function of the protector is indicated by a LED, performance in compliance with IEC61643-11.										
Internal Wire	Tinned copper conductor with silicone insulated internal wire. IMQ approved. Working temperature -40°C to +180°C.										
Terminal Block	Terminal block in GFR PA6.6 for cable with cross section up to 2.5 sqmm. VDE approved. Class1 luminaire provided with the earth connection.										
Caution	Installation work has to be carried on according to the enclosed installation manual.										
Color	<table border="0"> <tr> <td></td> <td>Black O1</td> </tr> <tr> <td></td> <td>Graphite O2</td> </tr> <tr> <td></td> <td>Dark Grey O3</td> </tr> <tr> <td></td> <td>Aluminum Silver O4</td> </tr> <tr> <td></td> <td>White O6</td> </tr> </table>		Black O1		Graphite O2		Dark Grey O3		Aluminum Silver O4		White O6
	Black O1										
	Graphite O2										
	Dark Grey O3										
	Aluminum Silver O4										
	White O6										

### Light Distribution



# STICK

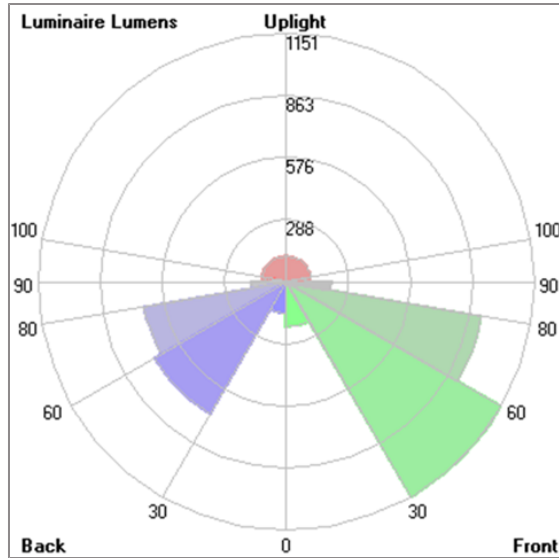
## STICK

### LIGHT COLUMN



LAST UPDATE: 03-03-2025

#### Bug Report



#### Lum. Classification System (LCS)

LCS	Zone	%Lumens	%Lamp	%Lum
FL	[0-30]	208.4	3.6	4.8
FM	[30-60]	1151.1	20.0	26.3
FH	[60-80]	918.8	16.0	21.0
FVH	[80-90]	209.5	3.6	4.8
BL	[0-30]	147.0	2.6	3.4
BM	[30-60]	705.3	12.2	16.1
BH	[60-80]	669.7	11.6	15.3
BVH	[80-90]	160.4	2.8	3.7
UL	[90-100]	82.6	1.4	1.9
UH	[100-180]	116.3	2.0	2.7
Total		4369.1	75.8	100.0
BUG Rating		B2-U3-G2		

\*Due to the constancy of product development, we reserve the right to alter all specification without prior notice.

# STICK

STICK

LIGHT COLUMN



LAST UPDATE: 03-03-2025

## Accessories



Ordering Code:  
AUN-ACB-0016-00  
Anchor Bolt Kit



Ordering Code:  
AUN-GSH-0052-XX  
Uplight shield cover

\*Due to the constancy of product development,  
we reserve the right to alter all specification  
without prior notice.

Unilamp Co., Ltd.  
461 Ramintra Road, Kannayao, Bangkok 10230 Thailand  
Tel : +66(0)2 943 2420-1, +66(0)2 946 4170-1  
Fax : +66(0)2 943 2419  
online@unilamp.co.th  
www.unilamp.co.th