

# EPSYLON

## EPSYLON – POLE TOP LIGHT / DOUBLE HEAD

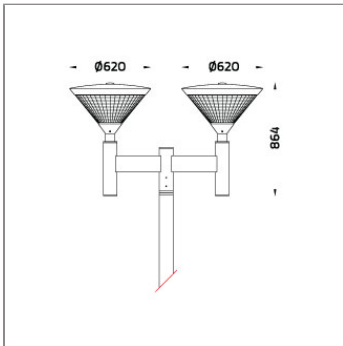
### POLE LIGHTS & POLE TOP LIGHTS



LAST UPDATE: 19-02-2024



EPSYLON is the family of pole top and wall mount luminaires with unshielded symmetrical distribution. High quality PMMA material is used to avoid discoloration of the diffuser. EPSYLON gives a broad spread light distribution with low glare. This luminaire is generally used to illuminate gardens, parks, pedestrian, squares and open spaces. It is assembled with high brightness LEDs. EPSYLON with traditional HID light source and E27 holder for Led retrofit lamps are also available. The recommended mounting height is between 3 – 5 meters. Available as an option are Aluminium Poles, Galvanized steel poles and anchorage unit for concrete foundations.



### Technical Data



Ordering Code :	7236-0-5-875-XX
Lamp :	LED
CCT :	3000 K
CRI :	CRI >80
SDCM :	SDCM = 3
Lamp Lumen :	2x3610 lm
Luminaire Lumen :	5560 lm
Lamp Wattage :	2x26 W
Luminaire Wattage :	58 W
Efficacy :	95 lm/W
Ambient Temperature :	50°C
Lumen Maintenance	L70B10 >36,000 h
Controller :	DALI
Input Voltage :	220-240Vac 50/60Hz
Net Weight :	21.00 kg.

#### Ordering code guide

XXXX-X-X-XXX-XX  
A B C D E

A Product Code  
B Reflector  
C Electrical Component  
D Lamp  
E Color



Icon definition

\*Due to the constancy of product development, we reserve the right to alter all specification without prior notice.

Unilamp Co., Ltd.  
461 Ramintra Road, Kannayao, Bangkok 10230 Thailand  
Tel : +66[0]2 943 2420-1, +66[0]2 946 4170-1  
Fax : +66[0]2 943 2419  
online@unilamp.co.th  
www.unilamp.co.th

# EPSYLON

## EPSYLON – POLE TOP LIGHT / DOUBLE HEAD

### POLE LIGHTS & POLE TOP LIGHTS

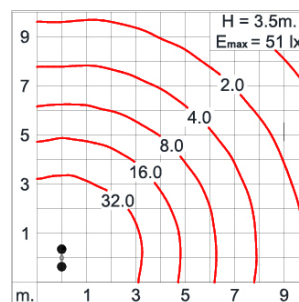
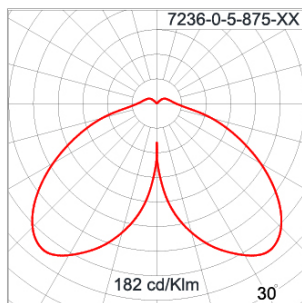


LAST UPDATE: 19-02-2024

#### Specification

IEC Standard	IEC 60598-1 General Requirement IEC 60598-2-1 Fixed Luminaires												
Protection	IP54 Class I												
IK Rating	Protection against mechanical impact IK08 on body and IK06 optical part.												
Luminaires Body Housing	High-pressure Die Cast Aluminium alloy body and components. Spun Aluminium alloy component.												
Coating Process	Nano Ceramic surface conversion, resistant to corrosive environment. Luminaire primarily coated with epoxy resin and top coated with UV stabilized polyester powder and cured in digital temperature controlled chamber at 200°C.												
Diffuser	Weather resistant injected prismatic PMMA cover.												
Gasket	Weather resistant silicone gasket. Working temperature -40°C to +200°C.												
External Screws	External screws are in stainless steel with protection grease.												
Led	High efficiency LED module utilized chips from world renowned manufacturer. Assembled on MCPCB and mounted on to heat conductive material.												
Driver	High quality DALI Driver in constant current. Conform to applicable safety standards and electromagnetic compatibility.												
Enhanced Protection	The luminaire is equipped with a 10kV surge protection device, the function of the protector is indicated by a LED, performance in compliance with IEC61643-11												
Internal Wire	Tinned copper conductor with silicone insulated internal wire. IMQ approved. Working temperature -40°C to +180°C.												
Terminal Block	Terminal block in GFR PA6.6 for cable with cross section up to 2.5 sqmm. VDE approved. Class1 luminaire provided with the earth connection.												
Caution	Installation work has to be carried on according to the enclosed installation manual.												
Color	<table><tr><td></td><td>Black 01</td></tr><tr><td></td><td>Graphite 02</td></tr><tr><td></td><td>Dark Grey 03</td></tr><tr><td></td><td>Aluminium Silver 04</td></tr><tr><td></td><td>White 06</td></tr><tr><td></td><td>Wooden Brown 07</td></tr></table>		Black 01		Graphite 02		Dark Grey 03		Aluminium Silver 04		White 06		Wooden Brown 07
	Black 01												
	Graphite 02												
	Dark Grey 03												
	Aluminium Silver 04												
	White 06												
	Wooden Brown 07												

#### Light Distribution



\*Due to the constancy of product development,  
we reserve the right to alter all specification  
without prior notice.

Unilamp Co., Ltd.  
461 Ramintra Road, Kannayao, Bangkok 10230 Thailand  
Tel : +66[0]2 943 2420-1, +66[0]2 946 4170-1  
Fax : +66[0]2 943 2419  
online@unilamp.co.th  
www.unilamp.co.th

# EPSYLON

## EPSYLON – POLE TOP LIGHT / DOUBLE HEAD

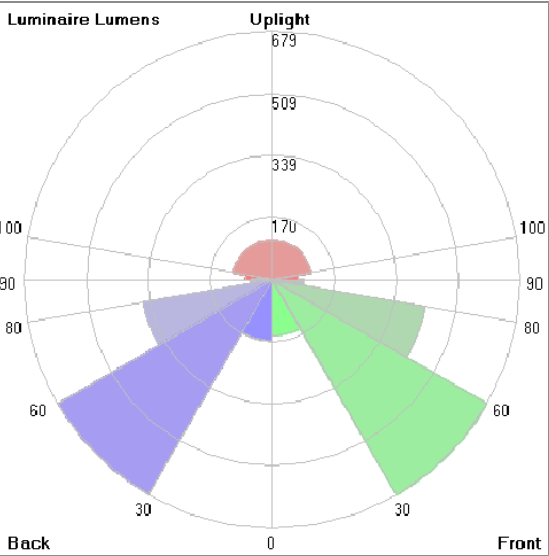
### POLE LIGHTS & POLE TOP LIGHTS



Unilamp

LAST UPDATE: 19-02-2024

#### Bug Report



Lum. Classification System [LCS]				
LCS	Zone	%Lumens	%Lamp	%Lum
FL	[0-30]	152.8	4.2	5.5
FM	[30-60]	678.7	18.8	24.4
FH	[60-80]	423.9	11.7	15.2
FVH	[80-90]	88.3	2.4	3.2
BL	[0-30]	167.0	4.6	6.0
BM	[30-60]	675.7	18.7	24.3
BH	[60-80]	357.4	9.9	12.9
BVH	[80-90]	58.7	1.6	2.1
UL	[90-100]	70.8	2.0	2.5
UH	[100-180]	107.9	3.0	3.9
Total		2781.2	76.9	100.0
BUG Rating		B1-U3-G1		

\*Due to the constancy of product development,  
we reserve the right to alter all specification  
without prior notice.

# EPSYLON

## EPSYLON – POLE TOP LIGHT / DOUBLE HEAD

### POLE LIGHTS & POLE TOP LIGHTS



LAST UPDATE: 19-02-2024

#### Accessories



Ordering Code:

ALUMINIUM-POLE-EPSYLON-DOUBLE

Please contact Sales  
Representative



Ordering Code:

STEEL-POLE-EPSYLON-DOUBLE

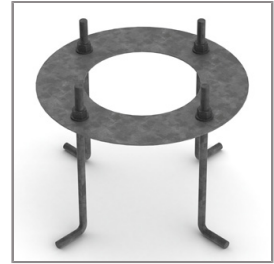
Please contact Sales  
Representative



Ordering Code:

AUN-ACB-0008-00

Anchor Bolt Kit for  
Galvanized Steel Pole. [for  
Diameter 102mm. and  
151x102mm.]



Ordering Code:

AUN-ACB-0005-00

Anchor Bolt Kit for  
Aluminium Pole