

CORE

MAXI CORE – POLE LIGHT / DOUBLE SIDED

POLE LIGHTS & POLE TOP LIGHTS

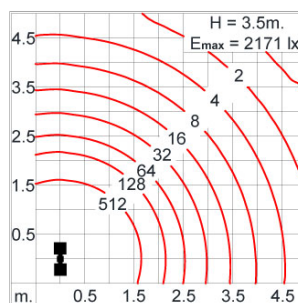
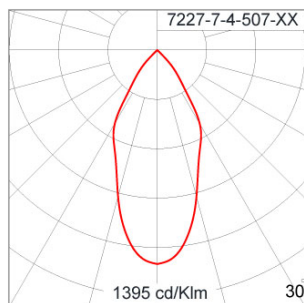


LAST UPDATE: 19-02-2024

Specification

IEC Standard	IEC 60598-1 General Requirement IEC 60598-2-1 Fixed Luminaires												
Protection	IP65 Class I												
IK Rating	Protection against mechanical impact IK08 on body and IK07 optical part.												
Luminaires Body Housing	High-pressure Die Cast Aluminium alloy body and components. Extruded Aluminium S6063 alloy body with low copper content.												
Coating Process	Nano Ceramic surface conversion, resistant to corrosive environment. Luminaire primarily coated with epoxy resin and top coated with UV stabilized polyester powder and cured in digital temperature controlled chamber at 200°C.												
Diffuser	Impact resistant safety tempered glass cover. Able to withstand the temperature up to 250°C.												
Reflector	High performance anodized spun aluminium reflector.												
Gasket	Post-cured treated silicone gasket. Temperature and weather resistant. Working temperature -40°C to +200°C.												
External Screws	External screws are in stainless steel with protection grease.												
Cable Entry	Cable entry protected by weather proof grommet. To be used with HO5RN-F/ HO7RN-F cable with 7-10mm. diameter.												
Led	High efficiency LED module in COB technology. Assembled on MCPCB and mounted on to heat conductive material.												
Driver	High quality Dimmable Driver [1-10V] in constant current. Conform to applicable safety standards and electromagnetic compatibility.												
Enhanced Protection	The luminaire is equipped with a 10kV surge protection device, the function of the protector is indicated by a LED, performance in compliance with IEC61643-11.												
Internal Wire	Tinned copper conductor with silicone insulated internal wire. IMQ approved. Working temperature -40°C to +180°C.												
Terminal Block	Terminal block in GFR PA6.6 for cable with cross section up to 4 sqmm. VDE approved. Class1 luminaire provided with the earth connection.												
Caution	Installation work has to be carried on according to the enclosed installation manual.												
Color	<table><tr><td></td><td>Black 01</td></tr><tr><td></td><td>Graphite 02</td></tr><tr><td></td><td>Dark Grey 03</td></tr><tr><td></td><td>Aluminium Silver 04</td></tr><tr><td></td><td>White 06</td></tr><tr><td></td><td>Wooden Brown 07</td></tr></table>		Black 01		Graphite 02		Dark Grey 03		Aluminium Silver 04		White 06		Wooden Brown 07
	Black 01												
	Graphite 02												
	Dark Grey 03												
	Aluminium Silver 04												
	White 06												
	Wooden Brown 07												

Light Distribution



*Due to the constancy of product development,
we reserve the right to alter all specification
without prior notice.

Unilamp Co., Ltd.
461 Ramintra Road, Kannayao, Bangkok 10230 Thailand
Tel : +66(0)2 943 2420-1, +66(0)2 946 4170-1
Fax : +66(0)2 943 2419
online@unilamp.co.th
www.unilamp.co.th

CORE

MAXI CORE – POLE LIGHT / DOUBLE
SIDED

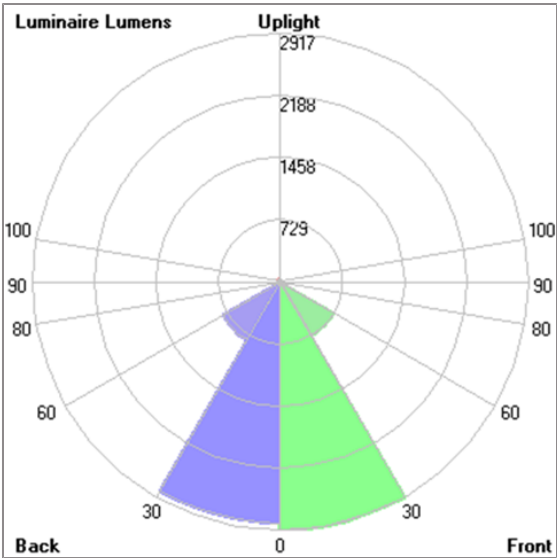
POLE LIGHTS & POLE TOP LIGHTS



Unilamp

LAST UPDATE: 19-02-2024

Bug Report



Lum. Classification System (LCS)				
LCS	Zone	%Lumens	%Lamp	%Lum
FL	[0-30]	2916.8	31.4	39.5
FM	[30-60]	733.4	7.9	9.9
FH	[60-80]	33.9	0.4	0.5
FVH	[80-90]	1.2	0.0	0.0
BL	[0-30]	2836.3	30.5	38.4
BM	[30-60]	787.4	8.5	10.7
BH	[60-80]	40.2	0.4	0.5
BVH	[80-90]	1.4	0.0	0.0
UL	[90-100]	0.0	0.0	0.0
UH	[100-180]	27.2	0.3	0.4
Total		7377.8	79.4	100.0
BUG Rating		B4-U2-G0		

*Due to the constancy of product development,
we reserve the right to alter all specification
without prior notice.

CORE

MAXI CORE – POLE LIGHT / DOUBLE SIDED

POLE LIGHTS & POLE TOP LIGHTS

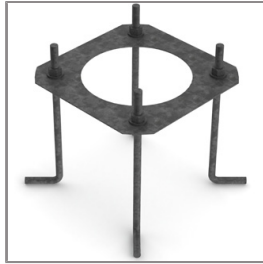


LAST UPDATE: 19-02-2024

Accessories



Ordering Code:
AUN-GHS-0022-00
Glare Shield Ring for COB



Ordering Code:
AUN-ACB-0006-00
Anchor Bolt Kit