



# CORE

## MAXI CORE – POLE LIGHT / SINGLE SIDED

### POLE LIGHTS & POLE TOP LIGHTS

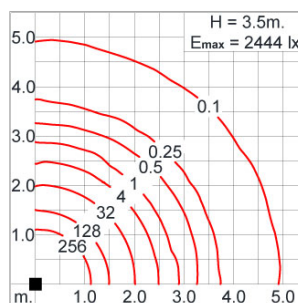
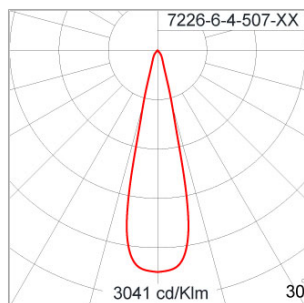


LAST UPDATE: 03-05-2024

#### Specification

IEC Standard	IEC 60598-1 General Requirement IEC 60598-2-1 Fixed Luminaires												
Protection	IP65 Class I												
IK Rating	Protection against mechanical impact IK08 on body and IK07 optical part.												
Luminaires Body Housing	High-pressure die cast aluminum alloy body and components. Extruded aluminum S6063 alloy body with low copper content.												
Coating Process	Nano Ceramic surface conversion, resistant to corrosive environment. Luminaire primarily coated with epoxy resin and top coated with UV stabilized polyester powder and cured in digital temperature controlled chamber at 200°C.												
Diffuser	Impact resistant safety tempered glass cover. Able to withstand the temperature up to 250°C.												
Reflector	High performance anodized spun aluminum reflector.												
Gasket	Post-cured treated silicone gasket. Temperature and weather resistant. Working temperature -40°C to +200°C.												
External Screws	External screws are in stainless steel with protection grease.												
Cable Entry	Cable entry protected by weather proof grommet. To be used with HO5RN-F/ HO7RN-F cable with 7-10mm. diameter.												
Led	High efficiency LED module in COB technology. Assembled on MCPCB and mounted on to heat conductive material.												
Driver	High quality Dimmable Driver [1-10V] in constant current. Conform to applicable safety standards and electromagnetic compatibility.												
Enhanced Protection	The luminaire is equipped with a 10kV surge protection device, the function of the protector is indicated by a LED, performance in compliance with IEC61643-11.												
Internal Wire	Tinned copper conductor with silicone insulated internal wire. IMQ approved. Working temperature -40°C to +180°C.												
Terminal Block	Terminal block in GFR PA6.6 for cable with cross section up to 4 sqmm. VDE approved. Class1 luminaire provided with the earth connection.												
Caution	Installation work has to be carried on according to the enclosed installation manual.												
Color	<table><tr><td></td><td>Black O1</td></tr><tr><td></td><td>Graphite O2</td></tr><tr><td></td><td>Dark Grey O3</td></tr><tr><td></td><td>Aluminum Silver O4</td></tr><tr><td></td><td>White O6</td></tr><tr><td></td><td>Wooden Brown O7</td></tr></table>		Black O1		Graphite O2		Dark Grey O3		Aluminum Silver O4		White O6		Wooden Brown O7
	Black O1												
	Graphite O2												
	Dark Grey O3												
	Aluminum Silver O4												
	White O6												
	Wooden Brown O7												

#### Light Distribution



# CORE

MAXI CORE – POLE LIGHT / SINGLE  
SIDED

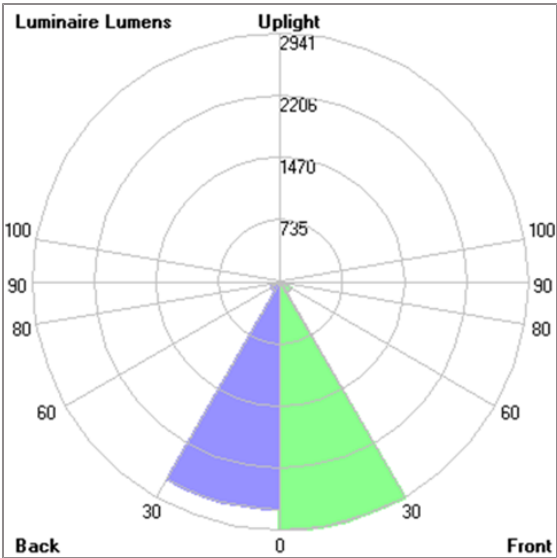
POLE LIGHTS & POLE TOP LIGHTS



Unilamp

LAST UPDATE: 03-05-2024

## Bug Report



Lum. Classification System (LCS)				
LCS	Zone	%Lumens	%Lamp	%Lum
FL	[0-30]	2940.7	31.6	49.7
FM	[30-60]	153.0	1.6	2.6
FH	[60-80]	4.1	0.0	0.1
FVH	[80-90]	0.5	0.0	0.0
BL	[0-30]	2691.6	28.9	45.5
BM	[30-60]	124.7	1.3	2.1
BH	[60-80]	3.6	0.0	0.1
BVH	[80-90]	0.5	0.0	0.0
UL	[90-100]	0.0	0.0	0.0
UH	[100-180]	3.3	0.0	0.1
Total		5922.0	63.4	100.0
BUG Rating		B4-U1-G0		

\*Due to the constancy of product development,  
we reserve the right to alter all specification  
without prior notice.

# CORE

## MAXI CORE – POLE LIGHT / SINGLE SIDED

### POLE LIGHTS & POLE TOP LIGHTS

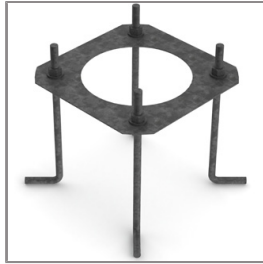


LAST UPDATE: 03-05-2024

#### Accessories



Ordering Code:  
AUN-GHS-0022-00  
Glare Shield Ring for COB



Ordering Code:  
AUN-ACB-0006-00  
Anchor Bolt Kit