

PILLAR

PILLAR

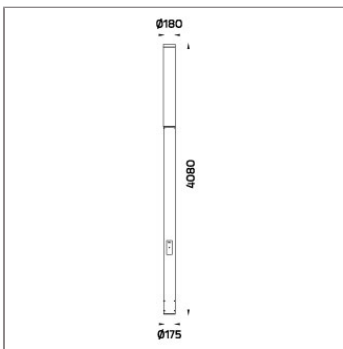
LIGHT COLUMN



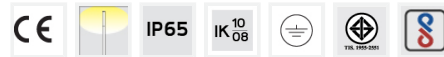
LAST UPDATE: 20-10-2025



PILLAR family is a cylindrical shaped light column, bollard and wall mount luminaire with unshielded and diffused symmetrical light distribution. This creates a uniform look throughout the lighting project. The classic slim shape is the perfect choice for small to large sized spaces. Its timeless design can be used with various architectural themes and blends equally well in parks. It is utilizing multiple LED with integrated constant current driver and surge protection device. State of the art dimming options are available as well as different color temperatures and wattage options. The standard height of this luminaire is presented in this catalogue; however, it can be customized according to specific requirement. An anchorage unit is available as an accessory. Catenary mounting of luminaires is great option for tasteful illumination of outdoor spaces. Flexible arrangement of the luminaire position enables lighting designers to set the light mood to a multitude of use cases. The innovative lever clamping system utilizes a single common tool for a trouble free easy installation. All commonly used catenary wires with a diameter of 4...8mm are suitable. Wire slope of up to 20° can be easily compensated. Catenary mount luminaires are equipped with a single prewired cable of 2000mm length. Double prewired cable for looping is available upon request.



Technical Data



Ordering Code :	7219-0-4-986-XX
Lamp :	LED
CCT :	4000 K
CRI :	CRI >80
SDCM :	SDCM = 3
Lamp Lumen :	9510 lm
Luminaire Lumen :	6020 lm
Lamp Wattage :	75 W
Luminaire Wattage :	80 W
Efficacy :	75 lm/W
Ambient Temperature :	40°C
Lumen Maintenance	L70B10 >36,000 h
Controller :	DIM 1-10V
Input Voltage :	220-240Vac 50/60Hz
Net Weight :	28.70 kg.

Ordering code guide

XXXX-X-X-XXX-XX

A B C D E

- A Product Code
- B Reflector
- C Electrical Component
- D Lamp
- E Color



Icon definition

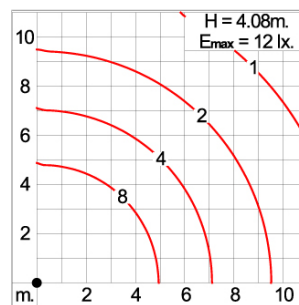
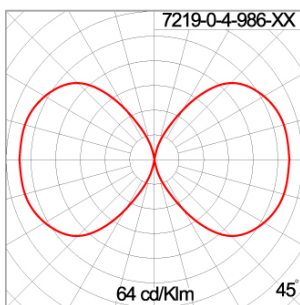
*Due to the constancy of product development, we reserve the right to alter all specification without prior notice.

Unilamp Co., Ltd.
461 Ramintra Road, Kannayao, Bangkok 10230 Thailand
Tel : +66(0)2 943 2420-1, +66(0)2 946 4170-1
Fax : +66(0)2 943 2419
online@unilamp.co.th
www.unilamp.co.th

Specification

IEC Standard	IEC 60598-1 General Requirement IEC 60598-2-1 Fixed Luminaires
Protection	IP65 Class I
IK Rating	Protection against mechanical impact IK10 on body and IK08 on optical part.
Luminaires Body Housing	High-pressure die cast aluminum alloy body and components. Extruded aluminum S6063 alloy body with low copper content. High strength cast aluminum alloy component.
Coating Process	Nano Ceramic surface conversion, resistant to corrosive environment. Luminaire primarily coated with epoxy resin and top coated with UV stabilized polyester powder and cured in digital temperature controlled chamber at 200°C.
Diffuser	Weather resistant extruded PMMA cover from Italy. Surface Hardened.
Gasket	Post-cured treated silicone gasket. Temperature and weather resistant. Working temperature -40°C to +200°C.
External Screws	External screws are in stainless steel with protection grease.
Led	High efficiency LED module utilized chips from world renowned manufacturer. Assembled on MCPCB and mounted on to heat conductive material.
Driver	High quality Dimmable Driver (1-10V) in constant current. Conform to applicable safety standards and electromagnetic compatibility.
Enhanced Protection	The luminaire is equipped with a 10kV surge protection device, the function of the protector is indicated by a LED, performance in compliance with IEC61643-11.
Internal Wire	Tinned copper conductor with silicone insulated internal wire. IMQ approved. Working temperature -40°C to +180°C.
Terminal Block	Terminal block in GFR PA6.6 for cable with cross section up to 4 sqmm. VDE approved. Class1 luminaire provided with the earth connection.
Caution	Installation work has to be carried on according to the enclosed installation manual.
Color	<div style="display: flex; align-items: center;"> <div style="width: 20px; height: 10px; background-color: black; margin-right: 5px;"></div> Black O1 <div style="width: 20px; height: 10px; background-color: #333; margin-right: 5px;"></div> Graphite O2 <div style="width: 20px; height: 10px; background-color: #666; margin-right: 5px;"></div> Dark Grey O3 <div style="width: 20px; height: 10px; background-color: #ccc; margin-right: 5px;"></div> Aluminum Silver O4 <div style="width: 20px; height: 10px; background-color: #fff; margin-right: 5px;"></div> White O6 </div>

Light Distribution



PILLAR

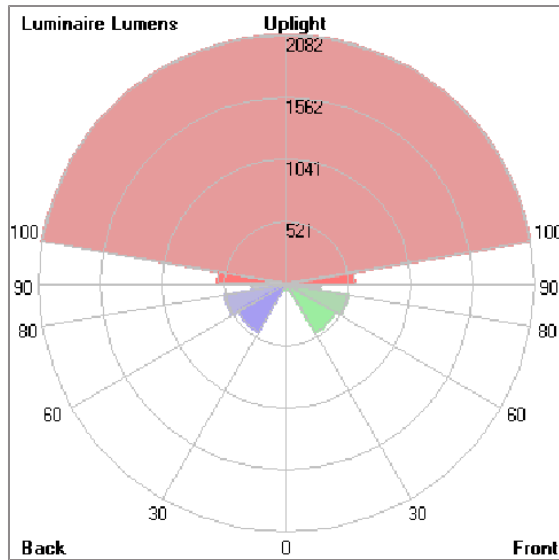
PILLAR

LIGHT COLUMN



LAST UPDATE: 20-10-2025

Bug Report



Lum. Classification System [LCS]

LCS	Zone	%Lumens	%Lamp	%Lum
FL	[0-30]	54.9	0.6	1.0
FM	[30-60]	475.2	5.0	8.9
FH	[60-80]	530.5	5.6	9.9
FVH	[80-90]	288.4	3.0	5.4
BL	[0-30]	51.0	0.5	1.0
BM	[30-60]	465.0	4.9	8.7
BH	[60-80]	526.3	5.5	9.9
BVH	[80-90]	286.8	3.0	5.4
UL	[90-100]	574.4	6.0	10.8
UH	[100-180]	2082.1	21.9	39.0
Total		5334.6	56.0	100.0
BUG Rating		B2-U5-G3		

*Due to the constancy of product development, we reserve the right to alter all specification without prior notice.

Unilamp Co., Ltd.
461 Ramintra Road, Kannayao, Bangkok 10230 Thailand
Tel : +66[0]2 943 2420-1, +66[0]2 946 4170-1
Fax : +66[0]2 943 2419
online@unilamp.co.th
www.unilamp.co.th

PILLAR

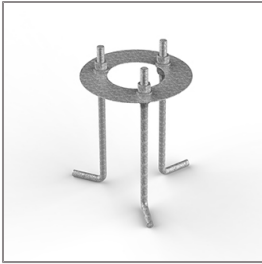
PILLAR

LIGHT COLUMN

 **Unilamp**

LAST UPDATE: 20-10-2025

Accessories



Ordering Code:

AUN-ACB-0016-00

Anchor Bolt Kit

*Due to the constancy of product development,
we reserve the right to alter all specification
without prior notice.

Unilamp Co., Ltd.
461 Ramintra Road, Kannayao, Bangkok 10230 Thailand
Tel : +66[0]2 943 2420-1, +66[0]2 946 4170-1
Fax : +66[0]2 943 2419
online@unilamp.co.th
www.unilamp.co.th