

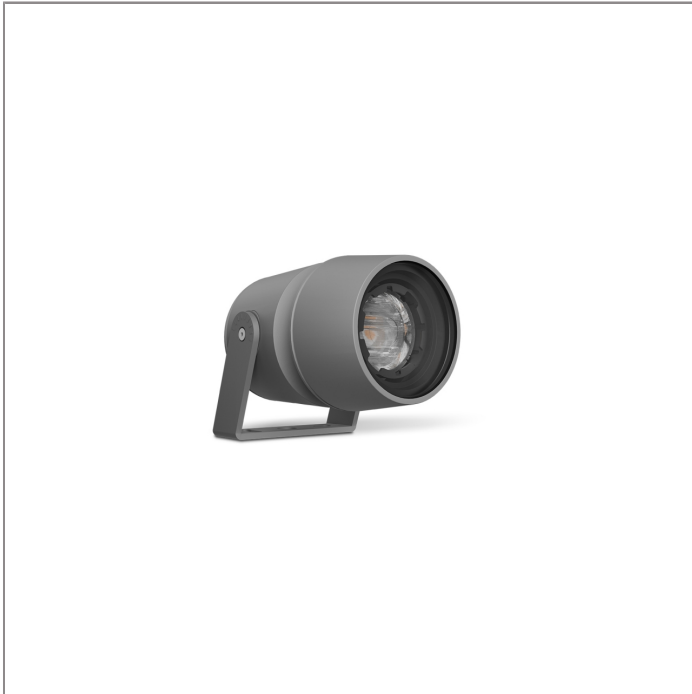
CETUS

MINI CETUS – U BRACKET

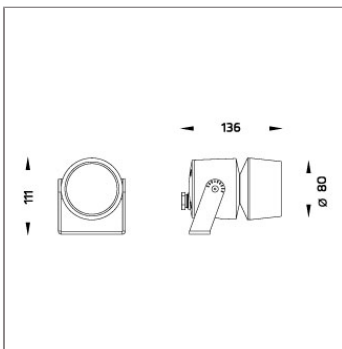
SPOTLIGHT



LAST UPDATE: 08-05-2026



CETUS is the next generation circular shaped projector designed for strict energy efficiency requirements as well as modular and versatile use cases. The control gear lifetime is extended by thermal isolation from the light source. The optional built in surge protection device reinforces CETUS ability to withstand toughest ambient conditions. CETUS is equipped with the Vent to rapidly equalize pressure potential in case of rapidly changing ambient conditions. Ultra-tough silica-boron trioxide glass is used for superior chemical resistance and class leading IK09 impact resistance. The Unilamp modular solutions system allows adoption of CETUS to any type of installation requirement even years after delivery. Circular economy assessment according to CIBSE TM66 is available on request.



Technical Data



| | |
|-----------------------|--------------------|
| Ordering Code : | 5996-N-3-901-XX |
| Lamp : | COB LED |
| Beam : | 22°/50 |
| CCT : | 3000 K |
| CRI : | CRI >80 |
| SDCM : | SDCM = 3 |
| Lamp Lumen : | 1850 lm |
| Luminaire Lumen : | 1480 lm |
| Lamp Wattage : | 12 W |
| Luminaire Wattage : | 13 W |
| Efficacy : | 113 lm/W |
| Ambient Temperature : | 50°C |
| Lumen Maintenance | L70B10 >60,000 h |
| Controller : | On-Off |
| Input Voltage : | 220-240Vac 50/60Hz |
| Net Weight : | - kg. |

Ordering code guide

XXXX-X-X-XXX-XX
A B C D E

- A Product Code
- B Reflector
- C Electrical Component
- D Lamp
- E Color



Icon definition

*Due to the constancy of product development, we reserve the right to alter all specification without prior notice.

Unilamp Co., Ltd.
461 Ramintra Road, Kannayao, Bangkok 10230 Thailand
Tel : +66(0)2 943 2420-1, +66(0)2 946 4170-1
Fax : +66(0)2 943 2419
online@unilamp.co.th
www.unilamp.co.th

CETUS

MINI CETUS – U BRACKET

SPOTLIGHT

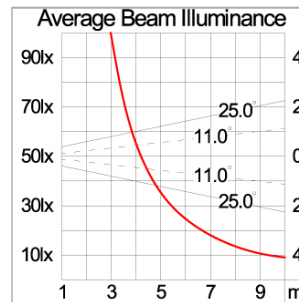
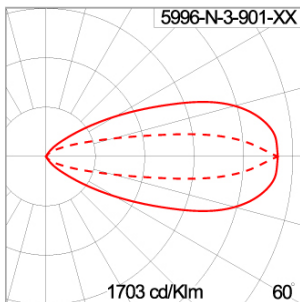


LAST UPDATE: 08-05-2026

Specification

| | | | | | | | | | | | | | |
|-------------------------|--|--|----------|--|-------------|--|--------------|--|--------------------|--|----------|--|-----------|
| IEC Standard | IEC 60598-1 General Requirement IEC 60598-2-1 Fixed Luminaires | | | | | | | | | | | | |
| Protection | IP66 Class I | | | | | | | | | | | | |
| IK Rating | Protection against mechanical impact IK10 on body and IK08 on optical part. | | | | | | | | | | | | |
| Luminaires Body Housing | Durable high-pressure die-cast aluminum alloy for excellent mechanical performance. | | | | | | | | | | | | |
| Coating Process | The luminaire undergoes a Nano Ceramic surface conversion, making it highly resistant to corrosive environments. It is primarily coated with a durable epoxy resin and finished with a UV-stabilized polyester powder top coat. The coating process is completed by curing the luminaire in a digitally controlled temperature chamber at 200°C, ensuring exceptional durability and long-lasting protection aga | | | | | | | | | | | | |
| Diffuser | Impact-resistant tempered glass designed for high-temperature environments. | | | | | | | | | | | | |
| Lens | Advanced molded PC lens offering diverse light distribution patterns. | | | | | | | | | | | | |
| Adjustable Optic | Adjustable aiming mechanism with graduated scale for precision control. | | | | | | | | | | | | |
| Gasket | Advanced post-cured silicone gasket offering superior weather and thermal resistance [-40°C to +200°C]. | | | | | | | | | | | | |
| External Screws | Durable stainless steel screws with anti-corrosion grease for extended lifespan. | | | | | | | | | | | | |
| Cable Entry | M20 cable gland for secure cable entry, compatible with H05RN-F/H07RN-F cables (7-13mm). | | | | | | | | | | | | |
| Led | COB LED module with high efficiency, mounted on MCPCB for superior thermal management. | | | | | | | | | | | | |
| Driver | Certified constant current LED driver meeting all EMC and safety requirements. | | | | | | | | | | | | |
| Internal Wire | Reliable silicone-insulated tinned copper internal wire, designed for -40°C to +180°C. | | | | | | | | | | | | |
| Terminal Block | Certified GFR PA6.6 terminal block supporting up to 2.5 sqmm cables. Grounded Class 1 luminaire ensuring proper earthing for secure operation. | | | | | | | | | | | | |
| Pre-Wire Cable | Certified pre-wired 3x1.0 sqmm cable, featuring H07RN-F neoprene insulation. | | | | | | | | | | | | |
| Caution | Installation must be performed as per the provided installation instructions. | | | | | | | | | | | | |
| Color | <table><tr><td></td><td>Black O1</td></tr><tr><td></td><td>Graphite O2</td></tr><tr><td></td><td>Dark Grey O3</td></tr><tr><td></td><td>Aluminum Silver O4</td></tr><tr><td></td><td>White O6</td></tr><tr><td></td><td>Corten O8</td></tr></table> | | Black O1 | | Graphite O2 | | Dark Grey O3 | | Aluminum Silver O4 | | White O6 | | Corten O8 |
| | Black O1 | | | | | | | | | | | | |
| | Graphite O2 | | | | | | | | | | | | |
| | Dark Grey O3 | | | | | | | | | | | | |
| | Aluminum Silver O4 | | | | | | | | | | | | |
| | White O6 | | | | | | | | | | | | |
| | Corten O8 | | | | | | | | | | | | |

Light Distribution



*Due to the constancy of product development, we reserve the right to alter all specification without prior notice.

Unilamp Co., Ltd.
461 Ramintra Road, Kannayao, Bangkok 10230 Thailand
Tel : +66(0)2 943 2420-1, +66(0)2 946 4170-1
Fax : +66(0)2 943 2419
online@unilamp.co.th
www.unilamp.co.th

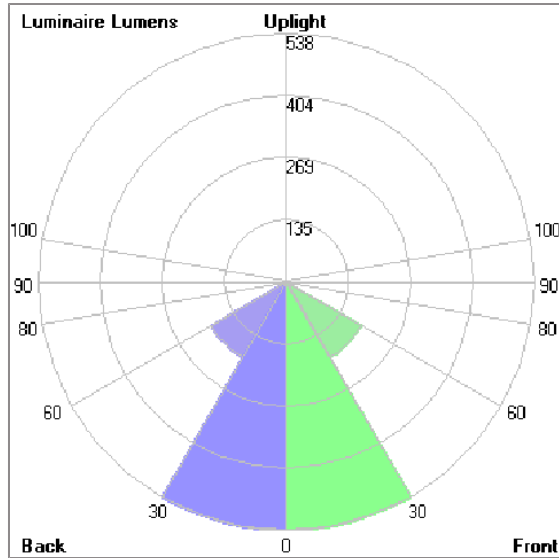
CETUS

MINI CETUS – U BRACKET SPOTLIGHT



LAST UPDATE: 08-05-2026

Bug Report



Lum. Classification System (LCS)

| LCS | Zone | %Lumens | %Lamp | %Lum |
|------------|-----------|----------|-------|-------|
| FL | [0-30] | 538.3 | 29.1 | 36.6 |
| FM | [30-60] | 188.5 | 10.2 | 12.8 |
| FH | [60-80] | 8.8 | 0.5 | 0.6 |
| FVH | [80-90] | 0.3 | 0.0 | 0.0 |
| BL | [0-30] | 538.3 | 29.1 | 36.6 |
| BM | [30-60] | 188.5 | 10.2 | 12.8 |
| BH | [60-80] | 8.8 | 0.5 | 0.6 |
| BVH | [80-90] | 0.3 | 0.0 | 0.0 |
| UL | [90-100] | 0.0 | 0.0 | 0.0 |
| UH | [100-180] | 0.0 | 0.0 | 0.0 |
| Total | | 1471.8 | 79.6 | 100.0 |
| BUG Rating | | B2-U0-G0 | | |

*Due to the constancy of product development,
we reserve the right to alter all specification
without prior notice.

CETUS

MINI CETUS – U BRACKET

SPOTLIGHT



LAST UPDATE: 08-05-2026

Accessories



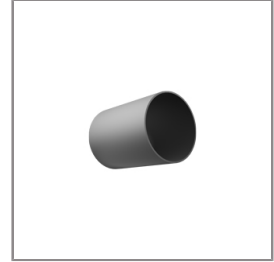
Ordering Code:
AUN-CON-0009-00
IP68 connection device,
cable diameter 5-9.5mm,
On-Off



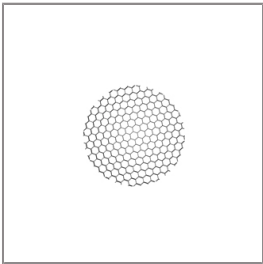
Ordering Code:
AUN-CON-0013-00
IP68 connection device,
cable diameter 7-11.5mm,
On-Off



Ordering Code:
AUN-GSH-0057-XX
Glare shield cap,
pre-assembly from factory



Ordering Code:
AUN-GSH-0058-XX
Snoot, pre-assembly from
factory



Ordering Code:
AUN-GSH-0043-00
Honeycomb louver, COB,
pre-assembly from factory

*Due to the constancy of product development,
we reserve the right to alter all specification
without prior notice.

Unilamp Co., Ltd.
461 Ramintra Road, Kannayao, Bangkok 10230 Thailand
Tel : +66[0]2 943 2420-1, +66[0]2 946 4170-1
Fax : +66[0]2 943 2419
online@unilamp.co.th
www.unilamp.co.th