

# ALPHA

## MINI ALPHA ROUND – ID

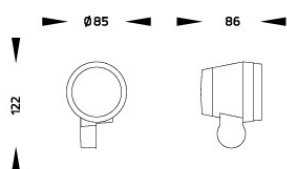
### SPOTLIGHT



LAST UPDATE: 23-07-2025



ALPHA is an entirely new family of outdoor spotlights/floodlights engineered from scratch. The primary shapes and overall small dimensions make it possible to install ALPHA in most professional and residential lighting applications. High-quality polycarbonate optics provide accurate beam control and offer a wide selection of light distributions. ALPHA can be customized with accessories such as honeycombs, shields and various mounting solutions for poles and surfaces. The minimized amount of needed tools and usage of quick connectors simplifies the installation.



### Technical Data



|                       |                    |
|-----------------------|--------------------|
| Ordering Code :       | 5972-N-3-901-XX    |
| Lamp :                | LED                |
| Beam :                | 21°/51°            |
| CCT :                 | 3000 K             |
| Lamp Lumen :          | 1850 lm            |
| Luminaire Lumen :     | 1430 lm            |
| Lamp Wattage :        | 12 W               |
| Luminaire Wattage :   | 13 W               |
| Efficacy :            | 110 lm/W           |
| Ambient Temperature : | 50°C               |
| Lumen Maintenance     | L70B10 >60,000 h   |
| Controller :          | On-Off             |
| Input Voltage :       | 220-240Vac 50/60Hz |
| Net Weight :          | - kg.              |

### Ordering code guide

XXXX-X-X-XXX-XX  
A B C D E

- A Product Code
- B Reflector
- C Electrical Component
- D Lamp
- E Color



Icon definition

\*Due to the constancy of product development, we reserve the right to alter all specification without prior notice.

Unilamp Co., Ltd.  
461 Ramintra Road, Kannayao, Bangkok 10230 Thailand  
Tel : +66(0)2 943 2420-1, +66(0)2 946 4170-1  
Fax : +66(0)2 943 2419  
online@unilamp.co.th  
www.unilamp.co.th

# ALPHA

## MINI ALPHA ROUND – ID

### SPOTLIGHT

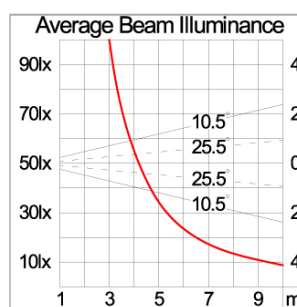
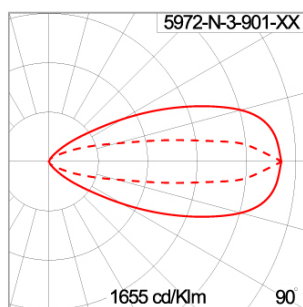


LAST UPDATE: 23-07-2025

#### Specification

|                         |  |
|-------------------------|--|
| IEC Standard            | IEC 60598-1 General Requirement<br>IEC 60598-2-1 Fixed Luminaires  |
| Protection              | IP66 Class I   |
| IK Rating               | Protection against mechanical impact IK10 on body and IK07 on optical part.  |
| Luminaires Body Housing | Durable high-pressure die-cast aluminum alloy for excellent mechanical performance.  |
| Coating Process         | The luminaire undergoes a Nano Ceramic surface conversion, making it highly resistant to corrosive environments. It is primarily coated with a durable epoxy resin and finished with a UV-stabilized polyester powder top coat. The coating process is completed by curing the luminaire in a digitally controlled temperature chamber at 200°C, ensuring exceptional durability and long-lasting protection aga |
| Diffuser                | Impact-resistant tempered glass designed for high-temperature environments.  |
| Lens                    | Advanced molded PC lens offering diverse light distribution patterns.  |
| Adjustable Optic        | Adjustable aiming mechanism with graduated scale for precision control.  |
| Gasket                  | Advanced post-cured silicone gasket offering superior weather and thermal resistance [-40°C to +200°C].  |
| External Screws         | Durable stainless steel screws with anti-corrosion grease for extended lifespan.   |
| Cable Entry             | M20 cable gland for secure cable entry, compatible with H05RN-F/H07RN-F cables (7-13mm).   |
| Led                     | COB LED module with high efficiency, mounted on MCPCB for superior thermal management.   |
| Driver                  | Certified constant current LED driver meeting all EMC and safety requirements.   |
| Internal Wire           | Reliable silicone-insulated tinned copper internal wire, designed for -40°C to +180°C.   |
| Terminal Block          | Certified GFR PA6.6 terminal block supporting up to 2.5 sqmm cables.<br>Grounded Class 1 luminaire ensuring proper earthing for secure operation.  |
| Caution                 | Installation must be performed as per the provided installation instructions.  |
| Color                   | <div><div><div></div><div></div><div></div><div></div><div></div></div><div>Black O1<br/>Graphite O2<br/>Dark Grey O3<br/>Aluminum Silver O4<br/>White O6</div></div>  |

#### Light Distribution



\*Due to the constancy of product development,  
we reserve the right to alter all specification  
without prior notice.

Unilamp Co., Ltd.  
461 Ramintra Road, Kannayao, Bangkok 10230 Thailand  
Tel : +66[0]2 943 2420-1, +66[0]2 946 4170-1  
Fax : +66[0]2 943 2419  
online@unilamp.co.th  
www.unilamp.co.th

# ALPHA

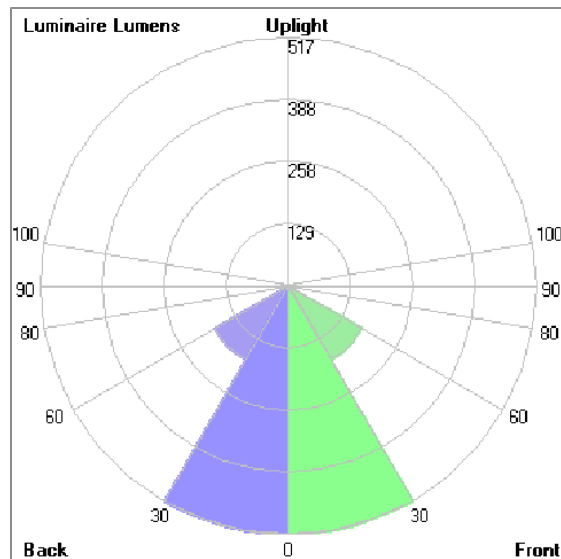
MINI ALPHA ROUND – ID

SPOTLIGHT



LAST UPDATE: 23-07-2025

## Bug Report



### Lum. Classification System (LCS)

| LCS        | Zone      | %Lumens | %Lamp | %Lum  |
|------------|-----------|---------|-------|-------|
| FL         | [0-30]    | 516.9   | 27.9  | 36.4  |
| FM         | [30-60]   | 177.6   | 9.6   | 12.5  |
| FH         | [60-80]   | 15.5    | 0.8   | 1.1   |
| FVH        | [80-90]   | 0.5     | 0.0   | 0.0   |
| BL         | [0-30]    | 516.9   | 27.9  | 36.4  |
| BM         | [30-60]   | 177.6   | 9.6   | 12.5  |
| BH         | [60-80]   | 15.5    | 0.8   | 1.1   |
| BVH        | [80-90]   | 0.5     | 0.0   | 0.0   |
| UL         | [90-100]  | 0.0     | 0.0   | 0.0   |
| UH         | [100-180] | 0.7     | 0.0   | 0.0   |
| Total      |           | 1421.7  | 76.6  | 100.0 |
| BUG Rating | B2-U1-G0  |         |       |       |

\*Due to the constancy of product development,  
we reserve the right to alter all specification  
without prior notice.

Unilamp Co., Ltd.  
461 Ramintra Road, Kannayao, Bangkok 10230 Thailand  
Tel : +66[0]2 943 2420-1, +66[0]2 946 4170-1  
Fax : +66[0]2 943 2419  
online@unilamp.co.th  
www.unilamp.co.th

# ALPHA

## MINI ALPHA ROUND – ID

### SPOTLIGHT

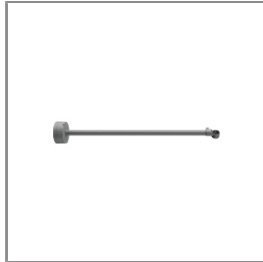


LAST UPDATE: 23-07-2025

#### Accessories



Ordering Code:  
AUN-MOT-0052-XX  
Mounting base, rotateable,  
On-Off, pre-assembly from  
factory



Ordering Code:  
AUN-MOT-0053-XX  
Outrigger arm, L= 740mm,  
On-Off, pre-assembly from  
factory



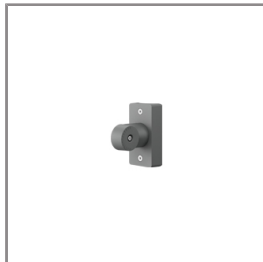
Ordering Code:  
AUN-POL-0188-XX  
Cylindrical aluminum pole,  
diameter 105mm, H=  
522mm, (pre-assembled  
from factory)



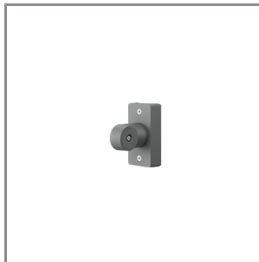
Ordering Code:  
AUN-ESP-0021-XX  
Earth spike, L= 900mm,  
aluminum, On-Off,  
pre-assembly from factory



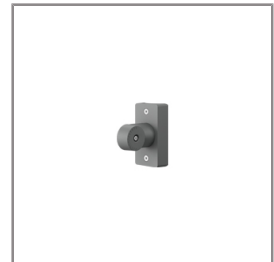
Ordering Code:  
AUN-MOT-0054-XX  
Pole mount adaptor,  
rectangular pole, On-Off,  
pre-assembly from factory



Ordering Code:  
AUN-MOT-0055-XX  
Pole mount adaptor, pole  
diameter 60mm, On-Off,  
pre-assembly from factory



Ordering Code:  
AUN-MOT-0056-XX  
Pole mount adaptor, pole  
diameter 76mm, On-Off,  
pre-assembly from factory



Ordering Code:  
AUN-MOT-0057-XX  
Pole mount adaptor, pole  
diameter 102-105mm,  
On-Off, pre-assembly from  
factory



Ordering Code:  
AUN-CLP-0052-XX  
Pole clamp, pole diameter  
60-76mm, single side  
luminaire mounting ,  
On-Off, pre-assembly from  
factory



Ordering Code:  
AUN-CLP-0053-XX  
Pole clamp, pole diameter  
60-76mm, double sided  
luminaire mounting ,  
On-Off, pre-assembly from  
factory



Ordering Code:  
AUN-CLP-0054-XX  
Pole clamp, pole diameter  
102-105mm, single side  
luminaire mounting ,  
On-Off, pre-assembly from  
factory



Ordering Code:  
AUN-CLP-0055-XX  
Pole clamp, pole diameter  
102-105mm, double sided  
luminaire mounting ,  
On-Off, pre-assembly from  
factory

\*Due to the constancy of product development,  
we reserve the right to alter all specification  
without prior notice.

Unilamp Co., Ltd.  
461 Ramintra Road, Kannayao, Bangkok 10230 Thailand  
Tel : +66(0)2 943 2420-1, +66(0)2 946 4170-1  
Fax : +66(0)2 943 2419  
online@unilamp.co.th  
www.unilamp.co.th

# ALPHA

## MINI ALPHA ROUND – ID

### SPOTLIGHT

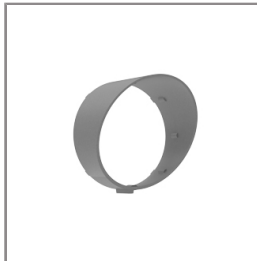
LAST UPDATE: 23-07-2025



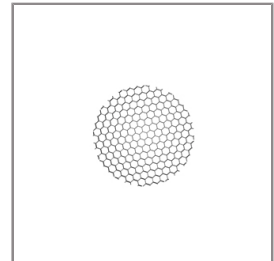
Ordering Code:  
AUN-ESP-0002-01  
Earth spike, GFR polymer



Ordering Code:  
AUN-TRS-0003-01  
Tree strap, small mounting base



Ordering Code:  
AUN-GHS-0027-XX  
Glare shield cap



Ordering Code:  
AUN-GSH-0043-00  
Honeycomb louver, COB, pre-assembly from factory



Ordering Code:  
AUN-CAB-0004-00  
Cable H07RN-F 3x1sqmm, L= 500, with UniBlock anti-humidity kit, pre-assembly from factory



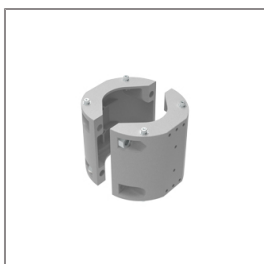
Ordering Code:  
AUN-CAB-0002-00  
Cable H07RN-F 3x1sqmm, L= 2000, with UniBlock anti-humidity kit, pre-assembly from factory



Ordering Code:  
AUN-CON-0013-00  
IP68 connection device, cable diameter 7-11.5mm, On-Off



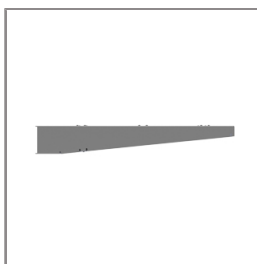
Ordering Code:  
AUN-CON-0009-00  
IP68 connection device, cable diameter 5-9.5mm, On-Off



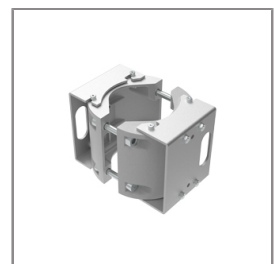
Ordering Code:  
AUN-CLP-0009-XX  
Pole clamp, pole diameter 60-76mm, for wall or pole mounting arm



Ordering Code:  
AUN-CLP-0008-XX  
Pole clamp, pole diameter 102-105mm, for wall or pole mounting arm



Ordering Code:  
AUN-MOT-0013-XX  
Pole mounting arm, for 1-3 projector



Ordering Code:  
AUN-CLP-0006-XX  
Pole clamp, pole diameter 60-76mm

# ALPHA

## MINI ALPHA ROUND – ID

### SPOTLIGHT

LAST UPDATE: 23-07-2025



Ordering Code:  
AUN-CLP-0004-XX  
Pole clamp, pole diameter  
102-105mm



Ordering Code:  
ALUMINUM-POLE-FOR-ALPHA-SPOTLIGHT  
Please contact Sales  
Representative



Ordering Code:  
STEEL-POLE-FOR-ALPHA-SPOTLIGHT  
Please contact Sales  
Representative



Ordering Code:  
AUN-ACB-0014-00  
Anchor bolt kit, bollard



Ordering Code:  
AUN-ACB-0005-00  
Anchor bolt kit, aluminum  
pole



Ordering Code:  
AUN-ACB-0008-00  
Anchor bolt kit, pole  
diameter 102mm and  
151x102mm, galvanized  
steel pole



Ordering Code:  
AUN-ESP-0022-XX  
Earth spike, L=  
1390-1760mm, aluminum,  
length adjustable, On-Off,  
pre-assembly from factory

\*Due to the constancy of product development,  
we reserve the right to alter all specification  
without prior notice.

Unilamp Co., Ltd.  
461 Ramintra Road, Kannayao, Bangkok 10230 Thailand  
Tel : +66[0]2 943 2420-1, +66[0]2 946 4170-1  
Fax : +66[0]2 943 2419  
online@unilamp.co.th  
www.unilamp.co.th