

ALPHA

MINI ALPHA SQUARE – GEAR

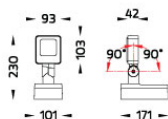
SPOTLIGHTS



LAST UPDATE: 23-02-2024



ALPHA is a completely new family of outdoor spot lights / flood lights engineered from scratch. The primary shapes and overall small dimensions makes it possible to install ALPHA in most professional and residential lighting applications. High quality polycarbonate optics provide accurate beam control and offer a wide selection of light distributions. ALPHA can be customized with accessories such as honeycombs, shields and various mounting solutions for poles and surfaces. The minimized amount of needed tools and usage of quick connectors simplifies the installation.



Technical Data



Ordering Code :	5945-N-5-676-XX
Lamp :	LED
Beam :	Elliptical V
CCT :	2700 K
CRI :	CRI >80
SDCM :	SDCM = 3
Lamp Lumen :	1490 lm
Luminaire Lumen :	930 lm
Lamp Wattage :	14 W
Luminaire Wattage :	15 W
Efficacy :	62 lm/W
Ambient Temperature :	50°C
Lumen Maintenance	L80B10 >108,000 h
Controller :	DALI
Input Voltage :	220-240Vac 50/60Hz
Net Weight :	1.30 kg.

Ordering code guide

XXXX-X-X-XXX-XX
A B C D E

A Product Code
B Reflector
C Electrical Component
D Lamp
E Color



Icon definition

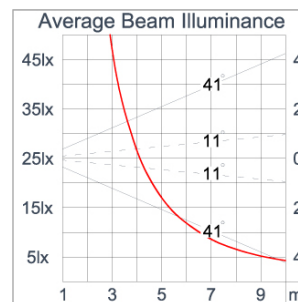
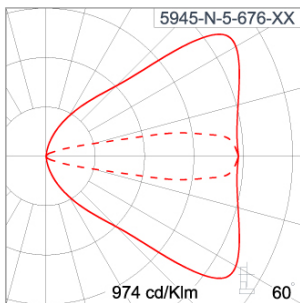
*Due to the constancy of product development, we reserve the right to alter all specification without prior notice.

Unilamp Co., Ltd.
461 Ramintra Road, Kannayao, Bangkok 10230 Thailand
Tel : +66[0]2 943 2420-1, +66[0]2 946 4170-1
Fax : +66[0]2 943 2419
online@unilamp.co.th
www.unilamp.co.th

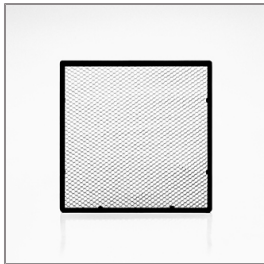
Specification

IEC Standard	IEC 60598-1 General Requirement IEC 60598-2-1 Fixed Luminaires
Protection	IP66 Class I
IK Rating	Protection against mechanical impact IK08 on body and IK06 optical part.
Luminaires Body Housing	High-pressure Die Cast Aluminium alloy body and components.
Coating Process	Nano Ceramic surface conversion, resistant to corrosive environment. Luminaire primarily coated with epoxy resin and top coated with UV stabilized polyester powder and cured in digital temperature controlled chamber at 200°C.
Diffuser	Impact resistant safety tempered glass cover. Able to withstand the temperature up to 250°C.
Lens	Molded PC lens from renowned manufacturers in various light distribution patterns.
Adjustable Optic	Adjustable aiming unit through graduated scale.
Gasket	Post-cured treated silicone gasket. Temperature and weather resistant. Working temperature -40°C to +200°C.
External Screws	External screws are in stainless steel with protection grease.
Cable Entry	Cable entry protected by M20 cable gland. To be used with H05RN-F/ H07RN-F cable with 7-13mm. diameter.
Led	High efficiency LED module utilized chips from world renowned manufacturer. Assembled on MCPCB and mounted on to heat conductive material.
Driver	High quality DALI Driver in constant current. Conform to applicable safety standards and electromagnetic compatibility.
Internal Wire	Tinned copper conductor with silicone insulated internal wire. IMQ approved. Working temperature -40°C to +180°C.
Terminal Block	Terminal block in GFR PA6.6 for cable with cross section up to 2.5 sqmm. VDE approved. Class1 luminaire provided with the earth connection.
Caution	Installation work has to be carried on according to the enclosed installation manual.
Color	<div> <div>Black 01</div> <div>Graphite 02</div> <div>Dark Grey 03</div> <div>Aluminium Silver 04</div> <div>White 06</div> <div>Wooden Brown 07</div> </div>

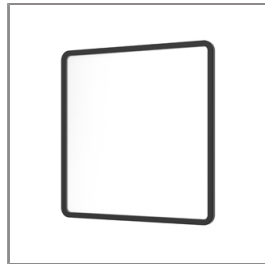
Light Distribution



Accessories



Ordering Code:
AUN-GSH-0007-00
Honey Comb Louver
[pre-assembled from
factory]



Ordering Code:
AUN-SOF-0021-00
Softening Filter
[pre-assembled from
factory]



Ordering Code:
AUN-CON-0011-00
IP68 Water Tight
Connecting Device 5 Pole,
Cable Diameter 7.1 – 13mm.
[1-10V or Dali]



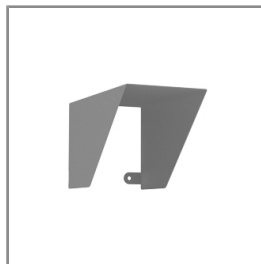
Ordering Code:
AUN-CON-0014-00
IP68 Water Tight
Connecting Device 5 Pole,
Cable Diameter 8 –
12.5mm. [1-10V or DALI]



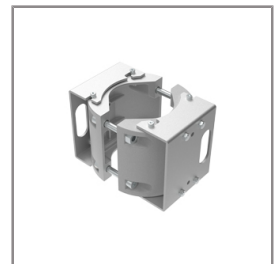
Ordering Code:
AUN-CAB-0003-00
Cable 3x1sqmm and
2x0.35 sqmm length 2000
mm with anti-humidity kit.
[pre-assembled from
factory]



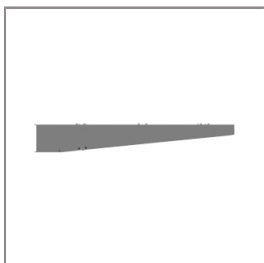
Ordering Code:
AUN-CLP-0004-XX
Pole_Clamp_Diameter_102-105mm



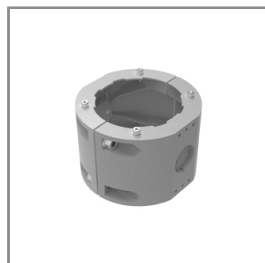
Ordering Code:
AUN-GHS-0029-XX
Glare Shield Cap.



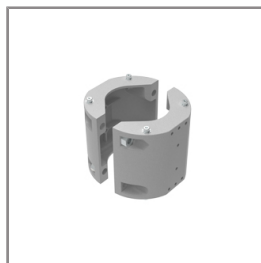
Ordering Code:
AUN-CLP-0006-XX
Pole Clamp Diameter
60-76mm.



Ordering Code:
AUN-MOT-0013-XX
Mounting arm for 1-3
Spotlights.



Ordering Code:
AUN-CLP-0008-XX
Pole Clamp Diameter
102-105mm. for mounting
arm.



Ordering Code:
AUN-CLP-0009-XX
Pole Clamp Diameter
60-76mm. for mounting
arm.



Ordering Code:
AUN-ESP-0001-00
Glass-Fiber Reinforced
Polymer Earth Spike

ALPHA

MINI ALPHA SQUARE – GEAR

SPOTLIGHTS



LAST UPDATE: 23-02-2024



Ordering Code:
AUN-TRS-0001-00
Tree Strap for Small Base



Ordering Code:
ALUMINIUM-POLE-FOR-ALPHA-SPOTLIGHT
Please contact Sales Representative



Ordering Code:
STEEL-POLE-FOR-ALPHA-SPOTLIGHT
Please contact Sales Representative

*Due to the constancy of product development,
we reserve the right to alter all specification
without prior notice.

Unilamp Co., Ltd.
461 Ramintra Road, Kannayao, Bangkok 10230 Thailand
Tel : +66[0]2 943 2420-1, +66[0]2 946 4170-1
Fax : +66[0]2 943 2419
online@unilamp.co.th
www.unilamp.co.th