

# ALPHA

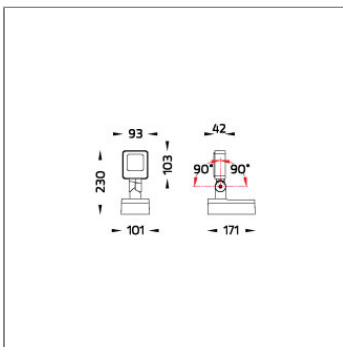
## MINI ALPHA SQUARE – GEAR PROJECTOR



LAST UPDATE: 10-05-2024



ALPHA is an entirely new family of outdoor spotlights/floodlights engineered from scratch. The primary shapes and overall small dimensions make it possible to install ALPHA in most professional and residential lighting applications. High-quality polycarbonate optics provide accurate beam control and offer a wide selection of light distributions. ALPHA can be customized with accessories such as honeycombs, shields and various mounting solutions for poles and surfaces. The minimized amount of needed tools and usage of quick connectors simplifies the installation.



### Technical Data



|                       |                    |
|-----------------------|--------------------|
| Ordering Code :       | 5945-N-3-545-XX    |
| Lamp :                | LED                |
| Beam :                | Elliptical V       |
| CCT :                 | 4000 K             |
| CRI :                 | CRI >80            |
| SDCM :                | SDCM = 3           |
| Lamp Lumen :          | 1530 lm            |
| Luminaire Lumen :     | 950 lm             |
| Lamp Wattage :        | 13 W               |
| Luminaire Wattage :   | 15 W               |
| Efficacy :            | 63 lm/W            |
| Ambient Temperature : | 50°C               |
| Lumen Maintenance     | L70B10 >60,000 h   |
| Controller :          | On-Off             |
| Input Voltage :       | 220-240Vac 50/60Hz |
| Net Weight :          | 1.30 kg.           |

### Ordering code guide

XXXX-X-X-XXX-XX  
A C E

- A Product Code
- B Reflector
- C Electrical Component
- D Lamp
- E Color



Icon definition

\*Due to the constancy of product development, we reserve the right to alter all specification without prior notice.

Unilamp Co., Ltd.  
461 Ramintra Road, Kannayao, Bangkok 10230 Thailand  
Tel : +66(0)2 943 2420-1, +66(0)2 946 4170-1  
Fax : +66(0)2 943 2419  
online@unilamp.co.th  
www.unilamp.co.th




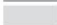





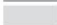





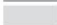


# ALPHA

## MINI ALPHA SQUARE – GEAR PROJECTOR

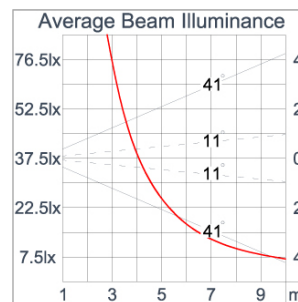
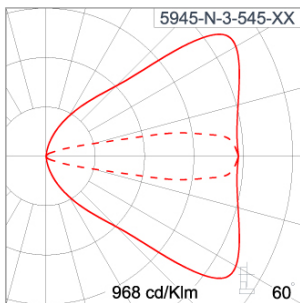


LAST UPDATE: 10-05-2024

### Specification

|   |   |   |          |   |             |   |              |   |                    |   |          |   |                 |
|---|---|---|----------|---|-------------|---|--------------|---|--------------------|---|----------|---|-----------------|
| IEC Standard  | IEC 60598-1 General Requirement<br>IEC 60598-2-1 Fixed Luminaires   |   |          |   |             |   |              |   |                    |   |          |   |                 |
| Protection  | IP66 Class I  |   |          |   |             |   |              |   |                    |   |          |   |                 |
| IK Rating   | Protection against mechanical impact IK08 on body and IK06 optical part.  |   |          |   |             |   |              |   |                    |   |          |   |                 |
| Luminaires Body Housing   | High-pressure die cast aluminum alloy body and components.  |   |          |   |             |   |              |   |                    |   |          |   |                 |
| Coating Process   | Nano Ceramic surface conversion, resistant to corrosive environment. Luminaire primarily coated with epoxy resin and top coated with UV stabilized polyester powder and cured in digital temperature controlled chamber at 200°C.   |   |          |   |             |   |              |   |                    |   |          |   |                 |
| Diffuser  | Impact resistant safety tempered glass cover. Able to withstand the temperature up to 250°C.  |   |          |   |             |   |              |   |                    |   |          |   |                 |
| Lens  | Molded PC lens from renowned manufacturers in various light distribution patterns.  |   |          |   |             |   |              |   |                    |   |          |   |                 |
| Adjustable Optic  | Adjustable aiming unit through graduated scale.   |   |          |   |             |   |              |   |                    |   |          |   |                 |
| Gasket  | Post-cured treated silicone gasket. Temperature and weather resistant. Working temperature -40°C to +200°C.   |   |          |   |             |   |              |   |                    |   |          |   |                 |
| External Screws   | External screws are in stainless steel with protection grease.  |   |          |   |             |   |              |   |                    |   |          |   |                 |
| Cable Entry   | Cable entry protected by M20 cable gland. To be used with H05RN-F/ H07RN-F cable with 7-13mm. diameter.   |   |          |   |             |   |              |   |                    |   |          |   |                 |
| Led   | High efficiency LED module utilized chips from world renowned manufacturer. Assembled on MCPCB and mounted on to heat conductive material.  |   |          |   |             |   |              |   |                    |   |          |   |                 |
| Driver  | High quality constant current LED driver. Conform to safety standard and electromagnetic compatibility standard.  |   |          |   |             |   |              |   |                    |   |          |   |                 |
| Internal Wire   | Tinned copper conductor with silicone insulated internal wire. IMQ approved. Working temperature -40°C to +180°C.   |   |          |   |             |   |              |   |                    |   |          |   |                 |
| Terminal Block  | Terminal block in GFR PA6.6 for cable with cross section up to 2.5 sqmm. VDE approved.<br>Class1 luminaire provided with the earth connection.  |   |          |   |             |   |              |   |                    |   |          |   |                 |
| Caution   | Installation work has to be carried on according to the enclosed installation manual.   |   |          |   |             |   |              |   |                    |   |          |   |                 |
| Color   | <table><tr><td></td><td>Black O1</td></tr><tr><td></td><td>Graphite O2</td></tr><tr><td></td><td>Dark Grey O3</td></tr><tr><td></td><td>Aluminum Silver O4</td></tr><tr><td></td><td>White O6</td></tr><tr><td></td><td>Wooden Brown O7</td></tr></table> |  | Black O1 |  | Graphite O2 |  | Dark Grey O3 |  | Aluminum Silver O4 |  | White O6 |  | Wooden Brown O7 |
|  | Black O1  |   |          |   |             |   |              |   |                    |   |          |   |                 |
|  | Graphite O2   |   |          |   |             |   |              |   |                    |   |          |   |                 |
|  | Dark Grey O3  |   |          |   |             |   |              |   |                    |   |          |   |                 |
|  | Aluminum Silver O4  |   |          |   |             |   |              |   |                    |   |          |   |                 |
|  | White O6  |   |          |   |             |   |              |   |                    |   |          |   |                 |
|  | Wooden Brown O7   |   |          |   |             |   |              |   |                    |   |          |   |                 |

### Light Distribution



\*Due to the constancy of product development,  
we reserve the right to alter all specification  
without prior notice.

Unilamp Co., Ltd.  
461 Ramintra Road, Kannayao, Bangkok 10230 Thailand  
Tel : +66(0)2 943 2420-1, +66(0)2 946 4170-1  
Fax : +66(0)2 943 2419  
online@unilamp.co.th  
www.unilamp.co.th

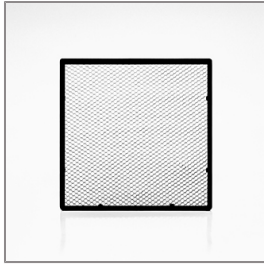
# ALPHA

## MINI ALPHA SQUARE – GEAR PROJECTOR



LAST UPDATE: 10-05-2024

### Accessories



Ordering Code:  
AUN-GSH-0007-00  
Honeycomb louver, LED,  
pre-assembly from factory



Ordering Code:  
AUN-SOF-0021-00  
Softening filter, LED,  
pre-assembly from factory



Ordering Code:  
AUN-CON-0009-00  
IP68 connection device,  
cable diameter 5-9.5mm,  
On-Off



Ordering Code:  
AUN-CON-0013-00  
IP68 connection device,  
cable diameter 7-11.5mm,  
On-Off



Ordering Code:  
AUN-CAB-0002-00  
Cable HO7RN-F 3x1sqmm,  
L= 2000, with UniBlock  
anti-humidity kit,  
pre-assembly from factory



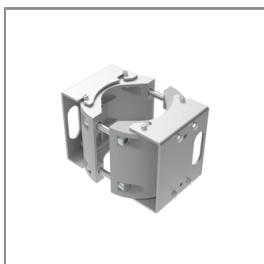
Ordering Code:  
AUN-CLP-0004-XX  
Pole clamp, pole diameter  
102-105mm



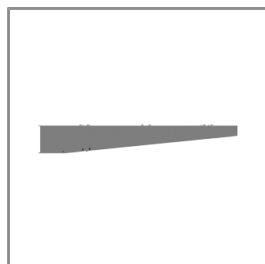
Ordering Code:  
AUN-CAB-0004-00  
Cable HO7RN-F 3x1sqmm,  
L= 500, with UniBlock  
anti-humidity kit,  
pre-assembly from factory



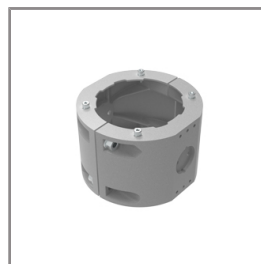
Ordering Code:  
AUN-GHS-0029-XX  
Glare shield cap



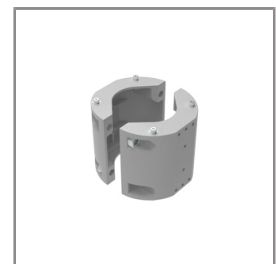
Ordering Code:  
AUN-CLP-0006-XX  
Pole clamp, pole diameter  
60-76mm



Ordering Code:  
AUN-MOT-0013-XX  
Pole mounting arm, for 1-3  
projector



Ordering Code:  
AUN-CLP-0008-XX  
Pole clamp, pole diameter  
102-105mm, for wall or  
pole mounting arm



Ordering Code:  
AUN-CLP-0009-XX  
Pole clamp, pole diameter  
60-76mm, for wall or pole  
mounting arm

\*Due to the constancy of product development,  
we reserve the right to alter all specification  
without prior notice.

Unilamp Co., Ltd.  
461 Ramintra Road, Kannayao, Bangkok 10230 Thailand  
Tel : +66[0]2 943 2420-1, +66[0]2 946 4170-1  
Fax : +66[0]2 943 2419  
online@unilamp.co.th  
www.unilamp.co.th

# ALPHA

## MINI ALPHA SQUARE – GEAR PROJECTOR



LAST UPDATE: 10-05-2024



Ordering Code:  
AUN-ESP-0001-00  
Earth spike, GFR polymer



Ordering Code:  
AUN-TRS-0001-00  
Tree strap, small mounting  
base



Ordering Code:  
ALUMINUM-POLE-FOR-ALPHA-SPOTLIGHT  
Please contact Sales  
Representative



Ordering Code:  
STEEL-POLE-FOR-ALPHA-SPOTLIGHT  
Please contact Sales  
Representative

\*Due to the constancy of product development,  
we reserve the right to alter all specification  
without prior notice.

Unilamp Co., Ltd.  
461 Ramintra Road, Kannayao, Bangkok 10230 Thailand  
Tel : +66[0]2 943 2420-1, +66[0]2 946 4170-1  
Fax : +66[0]2 943 2419  
online@unilamp.co.th  
www.unilamp.co.th