

# KUBIK

## KUBIK OPTIC – GROUND MOUNT PROJECTOR



LAST UPDATE: 15-05-2024



KUBIK is a robust cube-shaped/rectangular-shaped spotlight/floodlight with LED and HID light source. The family offers ground/wall mount fixing, pole clamp and wall clamp array, indirect pole and indirect wall light. The front glass cover is flush to the luminaire housing thus dust and water are not accumulated. High-efficiency lenses and reflectors are used in this luminaire family. Aiming can be done through graduated scale by the tool. KUBIK is suitable to light up the object from short to medium distance for example bushes, plants, sculptures, flags, signboards, columns, building facets, playgrounds, open spaces etc. Full list of accessories is available as standard option.



### Technical Data



Ordering Code :	5942-N-5-534-XX
Lamp :	LED
Beam :	20°/46°
CCT :	2700 K
CRI :	CRI >80
SDCM :	SDCM = 3
Lamp Lumen :	4470 lm
Luminaire Lumen :	3070 lm
Lamp Wattage :	40 W
Luminaire Wattage :	43 W
Efficacy :	71 lm/W
Ambient Temperature :	50°C
Lumen Maintenance	L80B10 >108,000 h
Controller :	DALI
Input Voltage :	220-240Vac 50/60Hz
Net Weight :	5.30 kg.

#### Ordering code guide

XXXX-X-X-XXX-XX  
A B C D E

- A Product Code
- B Reflector
- C Electrical Component
- D Lamp
- E Color



Icon definition

\*Due to the constancy of product development, we reserve the right to alter all specification without prior notice.

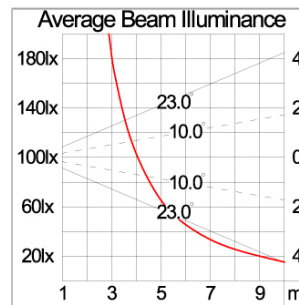
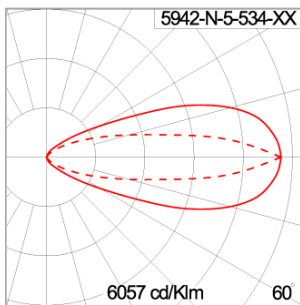
Unilamp Co., Ltd.  
461 Ramintra Road, Kannayao, Bangkok 10230 Thailand  
Tel : +66(O)2 943 2420-1, +66(O)2 946 4170-1  
Fax : +66(O)2 943 2419  
online@unilamp.co.th  
www.unilamp.co.th

### Specification

IEC Standard	IEC 60598-1 General Requirement IEC 60598-2-1 Fixed Luminaires
Protection	IP66 Class I
IK Rating	Protection against mechanical impact IK09 on body and optical part.
Luminaires Body Housing	High-pressure die cast aluminum alloy body and components.
Coating Process	Nano Ceramic surface conversion, resistant to corrosive environment. Luminaire primarily coated with epoxy resin and top coated with UV stabilized polyester powder and cured in digital temperature controlled chamber at 200°C.
Diffuser	Impact resistant safety tempered glass cover. Able to withstand the temperature up to 250°C. Glass flushes to the front cover, no accumulation of dust and water.
Lens	Molded PC lens from renowned manufacturers in various light distribution patterns.
Adjustable Optic	Adjustable aiming unit through graduated scale.
Gasket	Post-cured treated silicone gasket. Temperature and weather resistant. Working temperature -40°C to +200°C.
External Screws	External screws are in stainless steel with protection grease.
Cable Entry	Cable entry protected by M20 cable gland. To be used with H05RN-F/ H07RN-F cable with 7-13mm. diameter.
Led	High efficiency LED module utilized chips from world renowned manufacturer. Assembled on MCPCB and mounted on to heat conductive material.
Driver	High quality DALI Driver in constant current. Conform to applicable safety standards and electromagnetic compatibility.
Internal Wire	Tinned copper conductor with silicone insulated internal wire. IMQ approved. Working temperature -40°C to +180°C.
Terminal Block	Terminal block in GFR PA6.6 for cable with cross section up to 2.5 sqmm. VDE approved. Class1 luminaire provided with the earth connection.
Pre-Wire Cable	Pre-wired with 5-core cable for power [3x1 sqmm.] and dimming signal [2x0.35 sqmm.]. Equipped with anti-humidity kit.
Caution	Installation work has to be carried on according to the enclosed installation manual.

Color	<div style="display: flex; flex-wrap: wrap;"> <div style="width: 50%;"> <ul style="list-style-type: none"> <li><span style="display: inline-block; width: 15px; height: 10px; background-color: black; margin-right: 5px;"></span> Black 01</li> <li><span style="display: inline-block; width: 15px; height: 10px; background-color: #333; margin-right: 5px;"></span> Graphite 02</li> <li><span style="display: inline-block; width: 15px; height: 10px; background-color: #666; margin-right: 5px;"></span> Dark Grey 03</li> <li><span style="display: inline-block; width: 15px; height: 10px; background-color: #999; margin-right: 5px;"></span> Aluminium Silver 04</li> <li><span style="display: inline-block; width: 15px; height: 10px; background-color: #ccc; margin-right: 5px;"></span> White 06</li> <li><span style="display: inline-block; width: 15px; height: 10px; background-color: #800; margin-right: 5px;"></span> Wooden Brown 07</li> </ul> </div> <div style="width: 50%;"> <p><b>2 TONE COLOR</b></p> <ul style="list-style-type: none"> <li><span style="display: inline-block; width: 15px; height: 10px; background-color: #fff; border: 1px solid #ccc; margin-right: 5px;"></span> White-Dark Grey 21</li> <li><span style="display: inline-block; width: 15px; height: 10px; background-color: #ccc; border: 1px solid #ccc; margin-right: 5px;"></span> Silver-Dark Grey 22</li> <li><span style="display: inline-block; width: 15px; height: 10px; background-color: #666; border: 1px solid #ccc; margin-right: 5px;"></span> Silver-Graphite 23</li> </ul> </div> </div>
-------	---

### Light Distribution



\*Due to the constancy of product development, we reserve the right to alter all specification without prior notice.

### Accessories



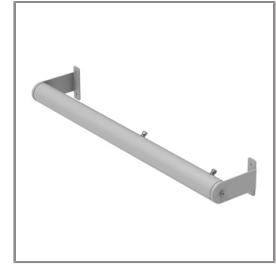
Ordering Code:  
AUN-GSH-0012-00  
Honeycomb louver, LED,  
pre-assembly from factory



Ordering Code:  
AUN-SOF-0026-00  
Softening Filter  
(pre-assembled from  
factory)



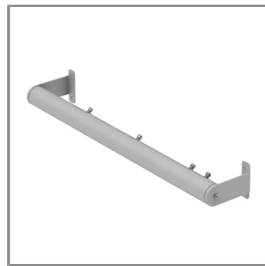
Ordering Code:  
AUN-CLP-0005-XX  
Pole Clamp Diameter  
102-105mm



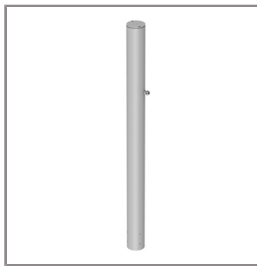
Ordering Code:  
AUN-MOT-0005-XX  
Wall Array for 2 Spotlights



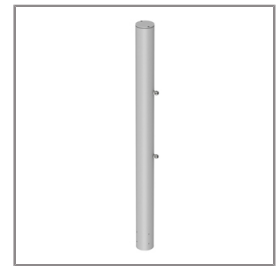
Ordering Code:  
AUN-MOT-0006-XX  
Wall Array for 4 Spotlights



Ordering Code:  
AUN-MOT-0007-XX  
Wall Array for 6 Spotlights



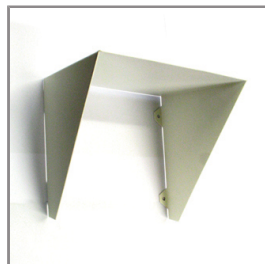
Ordering Code:  
AUN-POL-0025-XX  
Pole Array for 2 Spotlights



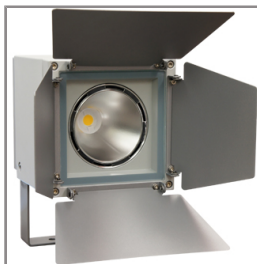
Ordering Code:  
AUN-POL-0026-XX  
Pole Array for 4 Spotlights



Ordering Code:  
AUN-POL-0027-XX  
Pole Array for 6 Spotlights



Ordering Code:  
AUN-GHS-0007-XX  
Glare shield cap



Ordering Code:  
AUN-GSH-0036-01  
Barn door shield



Ordering Code:  
ALUMINUM-POLE-FOR-KUBIK-POLE  
Please contact Sales  
Representative

# KUBIK

## KUBIK OPTIC – GROUND MOUNT PROJECTOR



LAST UPDATE: 15-05-2024



Ordering Code:  
STEEL-POLE-FOR-KUBIK-POLE  
Please contact Sales  
Representative

\*Due to the constancy of product development,  
we reserve the right to alter all specification  
without prior notice.

Unilamp Co., Ltd.  
461 Ramintra Road, Kannayao, Bangkok 10230 Thailand  
Tel : +66[0]2 943 2420-1, +66[0]2 946 4170-1  
Fax : +66[0]2 943 2419  
online@unilamp.co.th  
www.unilamp.co.th