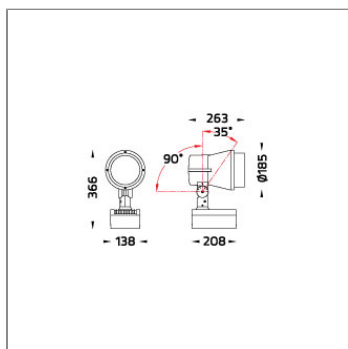




SONIC is a huge family of spotlight/floodlight with LED, HID and retrofit light source. The family offers ground/wall mount fixing, pole clamp and wall clamp array, indirect pole and wall light. The wide ranges of accessories like glare shield unit, tree strap, earth spike and anchorage bolt kit makes SONIC customizable for most application. Available in three sizes with a choice of six colors. SONIC is fitted with COB LED with high CRI in 2700K, 3000K or 4000K color temperature with 3 SDCM. The front glass cover is flush to the luminaire housing thus dust and water are not accumulated. High specular reflectors are used in this luminaire family to achieve an outstanding light output ratio. Aiming can be done through graduated scale by tool. For ease of installation and improved thermal performance the control gear compartment is housed separately to the light engine. SONIC is an ideal choice to accentuate sculptures, walls, building facades, bushes and trees.



## Technical Data



Ordering Code :	5935-7-3-752-XX
Lamp :	HIT-CE
Socket :	G12
Beam :	38°
CCT :	3000-4200 K
Lamp Lumen :	6600 lm
Luminaire Lumen :	6600 lm
Lamp Wattage :	70 W
Luminaire Wattage :	70 W
Ambient Temperature :	25°C
Controller :	On-Off
Input Voltage :	230Vac 50Hz
Net Weight :	5.50 kg.

### Ordering code guide

XXXX-X-X-XXX-XX  
A B C D E

- A Product Code
- B Reflector
- C Electrical Component
- D Lamp
- E Color

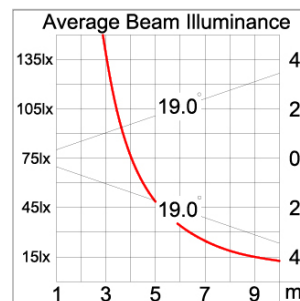
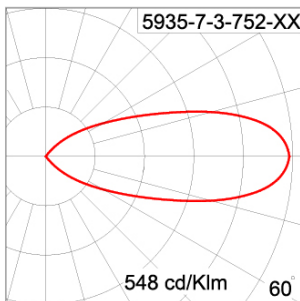


Icon definition

### Specification

IEC Standard	IEC 60598-1 General Requirement IEC 60598-2-1 Fixed Luminaires
Protection	IP65 Class I
IK Rating	Protection against mechanical impact IK08 on body and IK06 optical part.
Luminaires Body Housing	High-pressure Die Cast Aluminium alloy body and components.
Coating Process	Nano Ceramic surface conversion, resistant to corrosive environment. Luminaire primarily coated with epoxy resin and top coated with UV stabilized polyester powder and cured in digital temperature controlled chamber at 200°C.
Diffuser	Impact resistant safety tempered glass cover. Able to withstand the temperature up to 250°C.
Reflector	High performance anodized spun aluminium reflector.
Adjustable Optic	Adjustable aiming unit through graduated scale.
Gasket	Post-cured treated silicone gasket. Temperature and weather resistant. Working temperature -40°C to +200°C.
External Screws	External screws are in stainless steel with protection grease.
Cable Entry	Cable entry protected by M20 cable gland. To be used with H05RN-F/ H07RN-F cable with 7-13mm. diameter.
Lamp Holder	G12 lampholder in ceramic body. VDE/ ENEC approved.
Ballast	Vacuum impregnated magnetic ballast for HID lamp. ENEC approved.
Capacitor	Aluminium case capacitor with over pressure safety device. ENEC approved.
Ignitor	Electronic ignitor with automatic switch-off function. ENEC approved.
Internal Wire	Tinned copper conductor with silicone insulated internal wire. IMQ approved. Working temperature -40°C to +180°C. Tinned copper conductor with PTFE insulated internal wire. IMQ approved. Working temperature -40°C to +250°C.
Terminal Block	Terminal block in GFR PA6.6 for cable with cross section up to 2.5 sqmm. VDE approved. Class1 luminaire provided with the earth connection.
Caution	Installation work has to be carried on according to the enclosed installation manual.
Color	<div> <div>Black 01</div> <div>Graphite 02</div> <div>Dark Grey 03</div> <div>Aluminium Silver 04</div> <div>White 06</div> <div>Wooden Brown 07</div> </div>

### Light Distribution



#### Accessories



Ordering Code:  
AUN-CON-0009-00  
IP68 Water Tight  
Connecting Device, 3 Pole,  
Cable Diameter 5.0 –  
9.5mm.



Ordering Code:  
AUN-CON-0013-00  
IP68 Water Tight  
Connecting Device, 3 Pole,  
Cable Diameter 7 – 11.5mm.



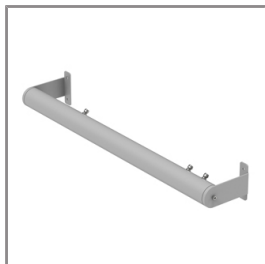
Ordering Code:  
AUN-CAB-0002-00  
Cable H07RN-F 3x1sqmm  
length 2000 mm with  
anti-humidity kit.  
(pre-assembled from  
factory)



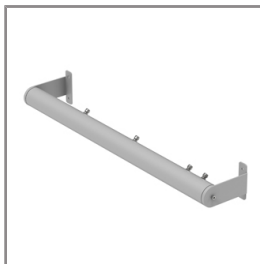
Ordering Code:  
AUN-CLP-0004-XX  
Pole\_Clamp\_Diameter\_102-105mm



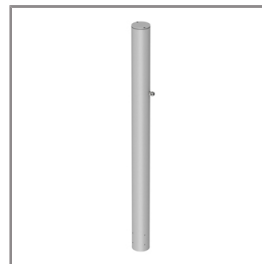
Ordering Code:  
AUN-MOT-0005-XX  
Wall\_Array\_for\_2\_Spotlights



Ordering Code:  
AUN-MOT-0006-XX  
Wall\_Array\_for\_4\_Spotlights



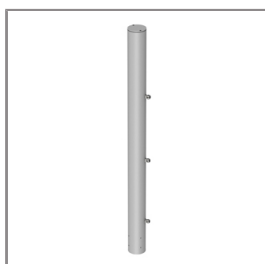
Ordering Code:  
AUN-MOT-0007-XX  
Wall\_Array\_for\_6\_Spotlights



Ordering Code:  
AUN-POL-0025-XX  
Pole\_Array\_for\_2\_Spotlights



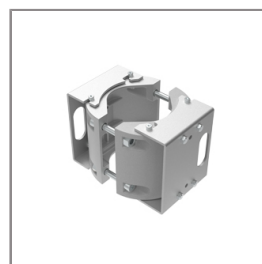
Ordering Code:  
AUN-POL-0026-XX  
Pole\_Array\_for\_4\_Spotlights



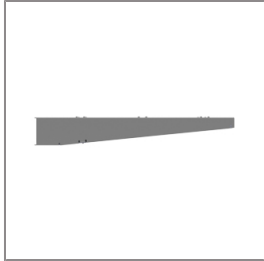
Ordering Code:  
AUN-POL-0027-XX  
Pole\_Array\_for\_6\_Spotlights



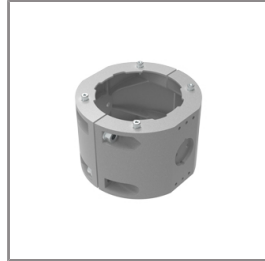
Ordering Code:  
AUN-CAB-0004-00  
Cable H07RN-F 3x1sqmm  
length 500mm. with  
anti-humidity  
kit.(pre-assembled from  
factory)



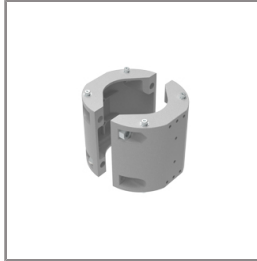
Ordering Code:  
AUN-CLP-0006-XX  
Pole Clamp Diameter  
60-76mm.



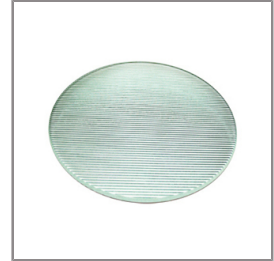
Ordering Code:  
AUN-MOT-0013-XX  
Mounting arm for 1-3  
Spotlights.



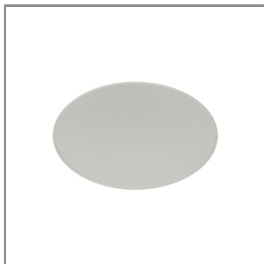
Ordering Code:  
AUN-CLP-0008-XX  
Pole Clamp Diameter  
102-105mm. for mounting  
arm.



Ordering Code:  
AUN-CLP-0009-XX  
Pole Clamp Diameter  
60-76mm. for mounting  
arm.



Ordering Code:  
AUN-SOF-0005-00  
Flat Beam Lens for HIT-CE  
lamp



Ordering Code:  
AUN-SOF-0012-00  
Softening Lens for HIT-CE  
lamp



Ordering Code:  
AUN-GHS-0003-XX  
Glare Shield Cap



Ordering Code:  
AUN-GHS-0006-11  
Glare Shield Ring for  
HIT-CE lamp



Ordering Code:  
AUN-ESP-0001-00  
Glass-Fiber Reinforced  
Polymer Earth Spike



Ordering Code:  
AUN-TRS-0002-00  
Double Tree Strap for Big  
Base



Ordering Code:  
ALUMINIUM-POLE-FOR-MEGA-SONIC-POLE-ARRAY  
Please contact Sales  
Representative



Ordering Code:  
STEEL-POLE-FOR-MEGA-SONIC-POLE-ARRAY  
Please contact Sales  
Representative