

# SONIC

## MEDIUM SONIC – GEAR

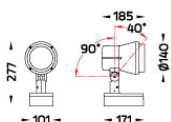
### SPOTLIGHT



LAST UPDATE: 09-11-2023



SONIC is a huge family of spotlight/floodlight with LED, HID and retrofit light source. The family offers ground/wall mount fixing, pole clamp and wall clamp array, indirect pole and wall light. The wide ranges of accessories like glare shield unit, tree strap, earth spike and anchorage bolt kit makes SONIC customizable for most application. Available in three sizes with a choice of six colors. SONIC is fitted with COB LED with high CRI in 2700K, 3000K or 4000K color temperature with 3 SDCM. The front glass cover is flush to the luminaire housing thus dust and water are not accumulated. High specular reflectors are used in this luminaire family to achieve an outstanding light output ratio. Aiming can be done through graduated scale by tool. For ease of installation and improved thermal performance the control gear compartment is housed separately to the light engine. SONIC is an ideal choice to accentuate sculptures, walls, building facades, bushes and trees.



## Technical Data



|                       |                    |
|-----------------------|--------------------|
| Ordering Code :       | 5933-7-3-887-XX    |
| Lamp :                | LED                |
| Beam :                | 48°                |
| CCT :                 | 3000 K             |
| CRI :                 | CRI >80            |
| SDCM :                | SDCM = 3           |
| Lamp Lumen :          | 3300 lm            |
| Luminaire Lumen :     | 2300 lm            |
| Lamp Wattage :        | 23 W               |
| Luminaire Wattage :   | 27 W               |
| Efficacy :            | 85 lm/W            |
| Ambient Temperature : | 40°C               |
| Lumen Maintenance     | L70B10 >90,000 h   |
| Controller :          | On-Off             |
| Input Voltage :       | 220-240Vac 50/60Hz |
| Net Weight :          | 3.00 kg.           |

### Ordering code guide

XXXX-X-X-XXX-XX  
A B C D E

A Product Code  
B Reflector  
C Electrical Component  
D Lamp  
E Color



Icon definition

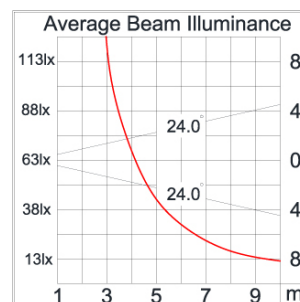
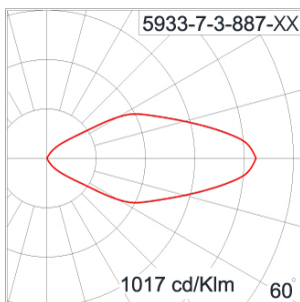
\*Due to the constancy of product development,  
we reserve the right to alter all specification  
without prior notice.

Unilamp Co., Ltd.  
461 Ramintra Road, Kannayao, Bangkok 10230 Thailand  
Tel : +66[0]2 943 2420-1, +66[0]2 946 4170-1  
Fax : +66[0]2 943 2419  
online@unilamp.co.th  
www.unilamp.co.th

### Specification

|                         |  |
|-------------------------|--|
| IEC Standard            | IEC 60598-1 General Requirement<br>IEC 60598-2-1 Fixed Luminaires  |
| Protection              | IP65 Class I   |
| IK Rating               | Protection against mechanical impact IK08 on body and IK06 optical part.   |
| Luminaires Body Housing | High-pressure Die Cast Aluminium alloy body and components.  |
| Coating Process         | Nano Ceramic surface conversion, resistant to corrosive environment. Luminaire primarily coated with epoxy resin and top coated with UV stabilized polyester powder and cured in digital temperature controlled chamber at 200°C.  |
| Diffuser                | Impact resistant safety tempered glass cover. Able to withstand the temperature up to 250°C.   |
| Reflector               | High performance anodized spun aluminium reflector.  |
| Adjustable Optic        | Adjustable aiming unit through graduated scale.  |
| Gasket                  | Post-cured treated silicone gasket. Temperature and weather resistant. Working temperature -40°C to +200°C.  |
| External Screws         | External screws are in stainless steel with protection grease.   |
| Cable Entry             | Cable entry protected by M20 cable gland. To be used with H05RN-F/ H07RN-F cable with 7-13mm. diameter.  |
| Led                     | High efficiency LED module in COB technology. Assembled on MCPCB and mounted on to heat conductive material.   |
| Driver                  | High quality constant current LED driver. Conform to safety standard and electromagnetic compatibility standard.   |
| Internal Wire           | Tinned copper conductor with silicone insulated internal wire. IMQ approved. Working temperature -40°C to +180°C.<br>Tinned copper conductor with PTFE insulated internal wire. IMQ approved. Working temperature -40°C to +250°C. |
| Terminal Block          | Terminal block in GFR PA6.6 for cable with cross section up to 2.5 sqmm. VDE approved.<br>Class1 luminaire provided with the earth connection.   |
| Caution                 | Installation work has to be carried on according to the enclosed installation manual.  |
| Color                   | <div> <div>Black O1</div> <div>Graphite O2</div> <div>Dark Grey O3</div> <div>Aluminium Silver O4</div> <div>White O6</div> <div>Wooden Brown O7</div> </div>  |

### Light Distribution



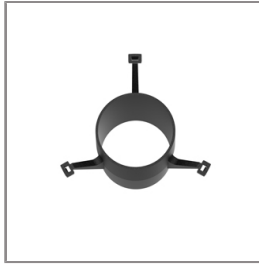
#### Accessories



Ordering Code:  
AUN-CON-0009-00  
IP68 Water Tight  
Connecting Device, 3 Pole,  
Cable Diameter 5.0 –  
9.5mm.



Ordering Code:  
AUN-CON-0013-00  
IP68 Water Tight  
Connecting Device, 3 Pole,  
Cable Diameter 7 – 11.5mm.



Ordering Code:  
AUN-GHS-0025-00  
Glare Shield Ring for COB



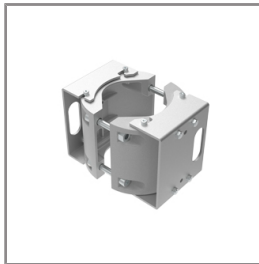
Ordering Code:  
AUN-CAB-0002-00  
Cable HO7RN-F 3x1sqmm  
length 2000 mm with  
anti-humidity kit.  
[pre-assembled from  
factory]



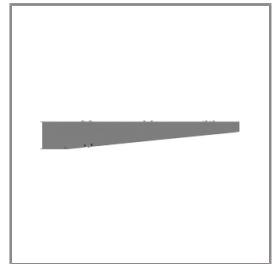
Ordering Code:  
AUN-CLP-0004-XX  
Pole\_Clamp\_Diameter\_102-105mm



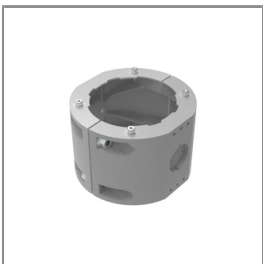
Ordering Code:  
AUN-CAB-0004-00  
Cable HO7RN-F 3x1sqmm  
length 500mm. with  
anti-humidity  
kit.[pre-assembled from  
factory]



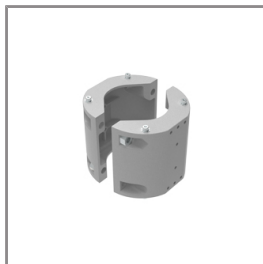
Ordering Code:  
AUN-CLP-0006-XX  
Pole Clamp Diameter  
60-76mm.



Ordering Code:  
AUN-MOT-0013-XX  
Mounting arm for 1-3  
Spotlights.



Ordering Code:  
AUN-CLP-0008-XX  
Pole Clamp Diameter  
102-105mm. for mounting  
arm.



Ordering Code:  
AUN-CLP-0009-XX  
Pole Clamp Diameter  
60-76mm. for mounting  
arm.



Ordering Code:  
AUN-GHS-0002-XX  
Glare Shield Cap



Ordering Code:  
AUN-ESP-0001-00  
Glass-Fiber Reinforced  
Polymer Earth Spike

# SONIC

## MEDIUM SONIC – GEAR

### SPOTLIGHT



LAST UPDATE: 09-11-2023



Ordering Code:  
AUN-TRS-0001-00  
Tree Strap for Small Base



Ordering Code:  
AUN-CON-0006-00  
IP68 Water Tight  
Connecting Device Cable  
Diameter 7 – 12mm.



Ordering Code:  
ALUMINIUM-POLE-FOR-SONIC-SPOTLIGHT  
Please contact Sales  
Representative



Ordering Code:  
STEEL-POLE-FOR-SONIC-SPOTLIGHT  
Please contact Sales  
Representative