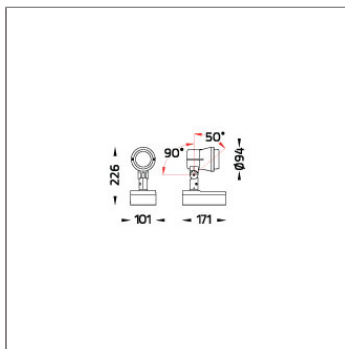




SONIC is a huge family of spotlight/floodlight with LED, HID and retrofit light source. The family offers ground/wall mount fixing, pole clamp and wall clamp array, indirect pole and wall light. The wide ranges of accessories like glare shield unit, tree strap, earth spike and anchorage bolt kit makes SONIC customizable for most application. Available in three sizes with a choice of six colors. SONIC is fitted with COB LED with high CRI in 2700K, 3000K or 4000K color temperature with 3 SDCM. The front glass cover is flush to the luminaire housing thus dust and water are not accumulated. High specular reflectors are used in this luminaire family to achieve an outstanding light output ratio. Aiming can be done through graduated scale by tool. For ease of installation and improved thermal performance the control gear compartment is housed separately to the light engine. SONIC is an ideal choice to accentuate sculptures, walls, building facades, bushes and trees.



Technical Data



Ordering Code : 5931-Q-7-759-XX

Lamp : LED

Beam : Sharp Elliptical V

CCT : 2700 K

CRI : CRI >80

SDCM : SDCM = 3

Lamp Lumen : 1490 lm

Luminaire Lumen : 280 lm

Lamp Wattage : 13 W[24Vdc]

Luminaire Wattage : 13 W

Efficacy : 21 lm/W

Ambient Temperature : 40°C

Lumen Maintenance L80B10 >108,000 h

Controller : Remote

Input Voltage : 24Vdc

Net Weight : – kg.

Ordering code guide

XXXX-X-X-XXX-XX
A B C D E

A Product Code
B Reflector
C Electrical Component
D Lamp
E Color

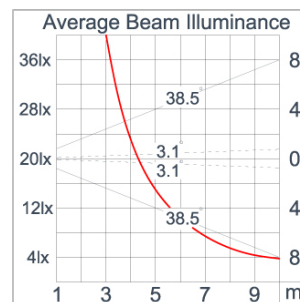
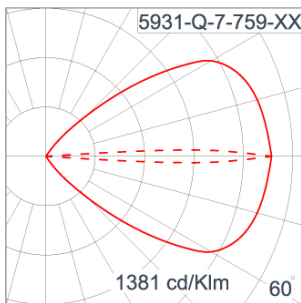


Icon definition

Specification

IEC Standard	IEC 60598-1 General Requirement IEC 60598-2-1 Fixed Luminaires
Protection	IP65 Class I
IK Rating	Protection against mechanical impact IK09 on body and IK07 optical part.
Luminaires Body Housing	High-pressure Die Cast Aluminium alloy body and components.
Coating Process	Nano Ceramic surface conversion, resistant to corrosive environment. Luminaire primarily coated with epoxy resin and top coated with UV stabilized polyester powder and cured in digital temperature controlled chamber at 200°C.
Diffuser	Impact resistant safety tempered glass cover. Able to withstand the temperature up to 250°C.
Lens	Molded PC lens from renowned manufacturers in various light distribution patterns.
Adjustable Optic	Adjustable aiming unit through graduated scale.
Gasket	Post-cured treated silicone gasket. Temperature and weather resistant. Working temperature -40°C to +200°C.
External Screws	External screws are in stainless steel with protection grease.
Cable Entry	Cable entry protected by M20 cable gland. To be used with H05RN-F/ H07RN-F cable with 7-13mm. diameter.
Led	High efficiency LED module utilized chips from world renowned manufacturer. Assembled on MCPCB and mounted on to heat conductive material.
Driver	Driver is not included and has to be ordered separately.
Internal Wire	Tinned copper conductor with silicone insulated internal wire. IMQ approved. Working temperature -40°C to +180°C.
Terminal Block	Terminal block in GFR PA6.6 for cable with cross section up to 2.5 sqmm. VDE approved. Class1 luminaire provided with the earth connection.
Caution	Installation work has to be carried on according to the enclosed installation manual.
Color	<div> <div></div> Black 01 <div></div> Graphite 02 <div></div> Dark Grey 03 <div></div> Aluminium Silver 04 <div></div> White 06 <div></div> Wooden Brown 07 </div>

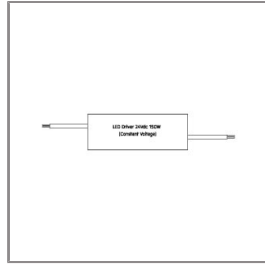
Light Distribution



Accessories



Ordering Code:
AUN-CON-0011-00
IP68 Water Tight
Connecting Device 5 Pole,
Cable Diameter 7.1 – 13mm.
[1-10V or Dali]



Ordering Code:
AUN-DRG-0011-00
LED Constant Voltage
Driver 24Vdc 150W.



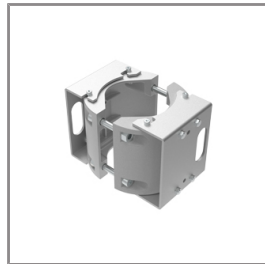
Ordering Code:
AUN-CON-0014-00
IP68 Water Tight
Connecting Device 5 Pole,
Cable Diameter 8 –
12.5mm. [1-10V or DALI]



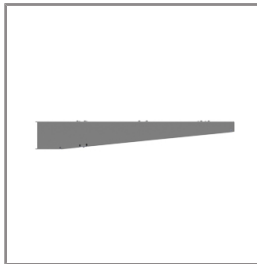
Ordering Code:
AUN-CAB-0003-00
Cable 3x1sqmm and
2x0.35 sqmm length 2000
mm with anti-humidity kit.
[pre-assembled from
factory]



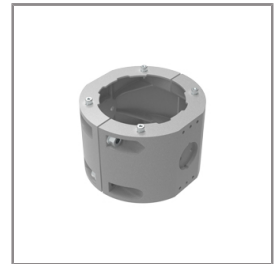
Ordering Code:
AUN-CLP-0004-XX
Pole_Clamp_Diameter_102-105mm



Ordering Code:
AUN-CLP-0006-XX
Pole Clamp Diameter
60-76mm.



Ordering Code:
AUN-MOT-0013-XX
Mounting arm for 1-3
Spotlights.



Ordering Code:
AUN-CLP-0008-XX
Pole Clamp Diameter
102-105mm. for mounting
arm.



Ordering Code:
AUN-CLP-0009-XX
Pole Clamp Diameter
60-76mm. for mounting
arm.



Ordering Code:
AUN-GHS-0001-XX
Glare Shield Cap



Ordering Code:
AUN-ESP-0001-00
Glass-Fiber Reinforced
Polymer Earth Spike



Ordering Code:
AUN-TRS-0001-00
Tree Strap for Small Base

SONIC

MINI SONIC – GEAR

SPOTLIGHT



LAST UPDATE: 10-01-2024



Ordering Code:

ALUMINIUM-POLE-FOR-SONIC-SPOTLIGHT

Please contact Sales

Representative

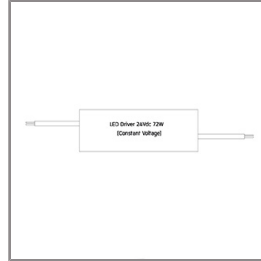


Ordering Code:

STEEL-POLE-FOR-SONIC-SPOTLIGHT

Please contact Sales

Representative



Ordering Code:

AUN-DRG-0027-00

LED Constant Voltage

Driver 24Vdc 72W.

*Due to the constancy of product development,
we reserve the right to alter all specification
without prior notice.

Unilamp Co., Ltd.
461 Ramintra Road, Kannayao, Bangkok 10230 Thailand
Tel : +66[0]2 943 2420-1, +66[0]2 946 4170-1
Fax : +66[0]2 943 2419
online@unilamp.co.th
www.unilamp.co.th