

# ALPHA

## MICRO ALPHA ROUND – CC

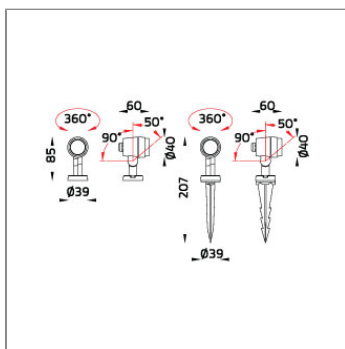
### SPOTLIGHT



LAST UPDATE: 21-07-2025



ALPHA is an entirely new family of outdoor spotlights/floodlights engineered from scratch. The primary shapes and overall small dimensions make it possible to install ALPHA in most professional and residential lighting applications. High-quality polycarbonate optics provide accurate beam control and offer a wide selection of light distributions. ALPHA can be customized with accessories such as honeycombs, shields and various mounting solutions for poles and surfaces. The minimized amount of needed tools and usage of quick connectors simplifies the installation.



### Technical Data



Ordering Code :	5928-H-2-562-XX
Lamp :	LED
Beam :	42°/14°
CCT :	3000 K
CRI :	CRI >80
SDCM :	SDCM = 3
Lamp Lumen :	410 lm
Luminaire Lumen :	300 lm
Lamp Wattage :	3.9 W[1200mA]
Luminaire Wattage :	3.9 W
Efficacy :	76 lm/W
Ambient Temperature :	50°C
Lumen Maintenance	L80B10 >108,000 h
Controller :	Remote
Input Voltage :	1200mA, 3.17Vdc, Uin max 50Vdc
Net Weight :	0.30 kg.

#### Ordering code guide

XXXX-X-X-XXX-XX  
A B C D E

- A Product Code
- B Reflector
- C Electrical Component
- D Lamp
- E Color



Icon definition

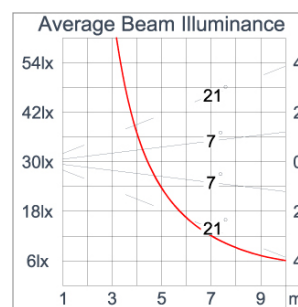
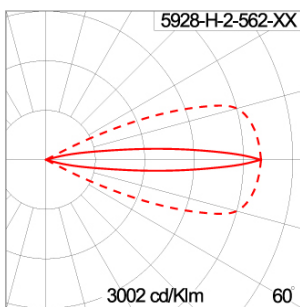
\*Due to the constancy of product development, we reserve the right to alter all specification without prior notice.

Unilamp Co., Ltd.  
461 Ramintra Road, Kannayao, Bangkok 10230 Thailand  
Tel : +66[0]2 943 2420-1, +66[0]2 946 4170-1  
Fax : +66[0]2 943 2419  
online@unilamp.co.th  
www.unilamp.co.th

### Specification

IEC Standard	IEC 60598-1 General Requirement IEC 60598-2-1 Fixed Luminaires
Protection	IP66 Class III
IK Rating	Protection against mechanical impact IK08 on body and IK06 optical part.
Luminaires Body Housing	High-pressure die cast aluminum alloy body and components.
Coating Process	Nano Ceramic surface conversion, resistant to corrosive environment. Luminaire primarily coated with epoxy resin and top coated with UV stabilized polyester powder and cured in digital temperature controlled chamber at 200°C.
Diffuser	Impact resistant safety tempered glass cover. Able to withstand the temperature up to 250°C.
Lens	Molded PC lens from renowned manufacturers in various light distribution patterns.
Adjustable Optic	Adjustable aiming unit through graduated scale.
Gasket	Post-cured treated silicone gasket. Temperature and weather resistant. Working temperature -40°C to +200°C.
External Screws	External screws are in stainless steel with protection grease.
Cable Entry	Cable entry protected by M12 cable gland. To be used with H05RN-F/ H07RN-F cable with 4-7mm. diameter.
Led	High efficiency LED module utilized chips from world renowned manufacturer. Assembled on MCPCB and mounted on to heat conductive material.
Driver	Driver is not included and has to be ordered separately.
Pre-Wire Cable	Pre-wired with 2x1.0 sqmm. H05RN-F neoprene cable. IMQ approved.
Caution	Installation work has to be carried on according to the enclosed installation manual.
Color	<div> <div>Black O1</div> <div>Graphite O2</div> <div>Dark Grey O3</div> <div>Aluminum Silver O4</div> <div>White O6</div> </div>

### Light Distribution



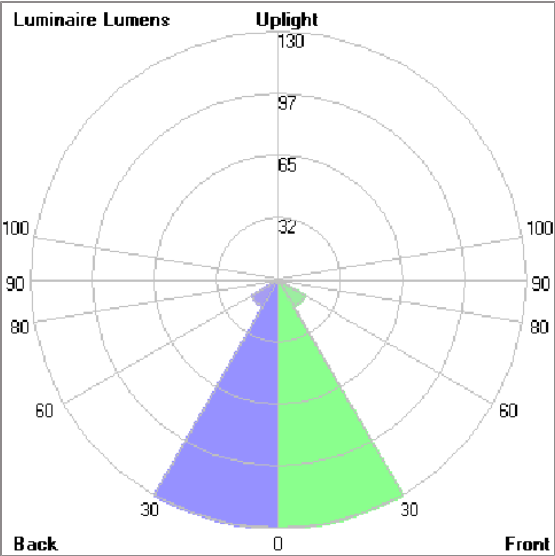
# ALPHA

## MICRO ALPHA ROUND – CC SPOTLIGHT



LAST UPDATE: 21-07-2025

### Bug Report



Lum. Classification System (LCS)				
LCS	Zone	%Lumens	%Lamp	%Lum
FL	[0-30]	129.9	31.7	43.8
FM	[30-60]	16.5	4.0	5.6
FH	[60-80]	1.6	0.4	0.5
FVH	[80-90]	0.1	0.0	0.0
BL	[0-30]	129.9	31.7	43.8
BM	[30-60]	16.5	4.0	5.6
BH	[60-80]	1.6	0.4	0.5
BVH	[80-90]	0.1	0.0	0.0
UL	[90-100]	0.0	0.0	0.0
UH	[100-180]	0.4	0.1	0.1
Total		296.6	72.3	100.0
BUG Rating	B1-U1-G0			

\*Due to the constancy of product development,  
we reserve the right to alter all specification  
without prior notice.

# ALPHA

## MICRO ALPHA ROUND – CC

### SPOTLIGHT

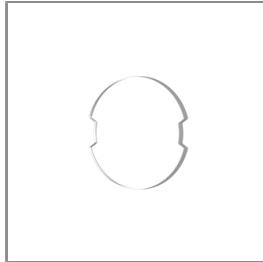


LAST UPDATE: 21-07-2025

#### Accessories



Ordering Code:  
AUN-DRG-0007-00  
LED constant current  
driver, 1200mA, 6W, with  
IP67 GFR polymer  
enclosure, On-Off



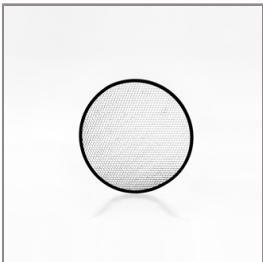
Ordering Code:  
AUN-SOF-0027-00  
Softening filter, LED,  
pre-assembly from factory



Ordering Code:  
AUN-ESP-0003-XX  
Earth spike, L= 900mm,  
aluminum, pre-assembly  
from factory



Ordering Code:  
AUN-TRS-0004-00  
Tree Strap



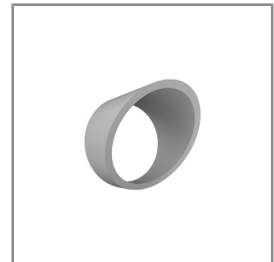
Ordering Code:  
AUN-GSH-0016-00  
Honeycomb louver, LED,  
pre-assembly from factory



Ordering Code:  
AUN-ESP-0006-XX  
Earth spike, L= 900mm,  
aluminum, single side  
luminaire mounting



Ordering Code:  
AUN-ESP-0007-XX  
Earth spike, L= 900mm,  
aluminum, double sided  
luminaire mounting



Ordering Code:  
AUN-GSH-0054-XX  
Glare shield cap