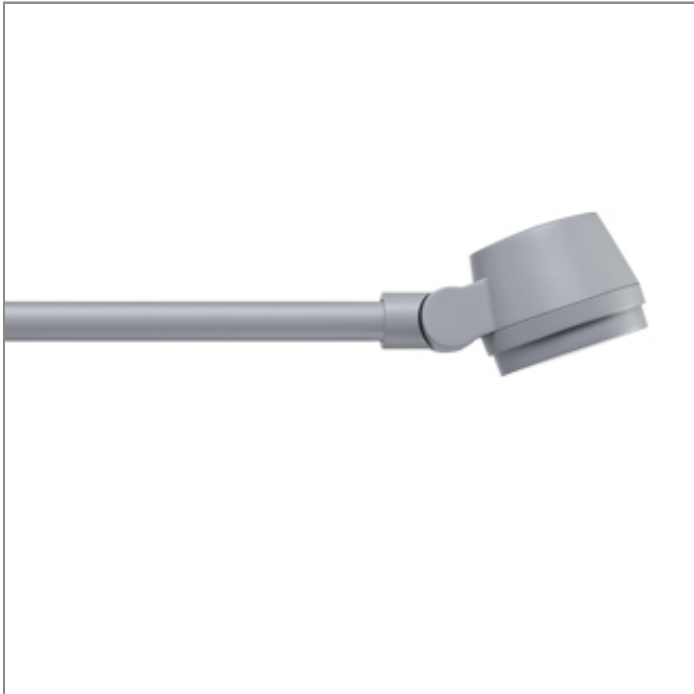


# ALPHA

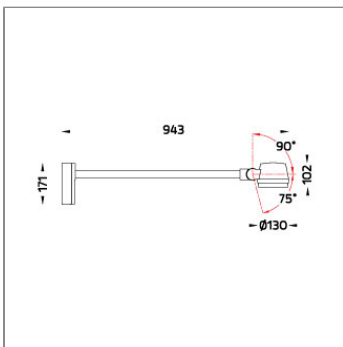
## MEDIUM ALPHA ROUND – GEAR ARM SPOTLIGHTS



LAST UPDATE: 23-02-2024



ALPHA is a completely new family of outdoor spot lights / flood lights engineered from scratch. The primary shapes and overall small dimensions makes it possible to install ALPHA in most professional and residential lighting applications. High quality polycarbonate optics provide accurate beam control and offer a wide selection of light distributions. ALPHA can be customized with accessories such as honeycombs, shields and various mounting solutions for poles and surfaces. The minimized amount of needed tools and usage of quick connectors simplifies the installation.



### Technical Data



|                       |                    |
|-----------------------|--------------------|
| Ordering Code :       | 5926-D-3-537-XX    |
| Lamp :                | LED                |
| Beam :                | 42°                |
| CCT :                 | 2700 K             |
| CRI :                 | CRI >80            |
| SDCM :                | SDCM = 3           |
| Lamp Lumen :          | 2300 lm            |
| Luminaire Lumen :     | 1390 lm            |
| Lamp Wattage :        | 18 W               |
| Luminaire Wattage :   | 19 W               |
| Efficacy :            | 73 lm/W            |
| Ambient Temperature : | 50°C               |
| Lumen Maintenance     | L80B10 >108,000 h  |
| Controller :          | On-Off             |
| Input Voltage :       | 220-240Vac 50/60Hz |
| Net Weight :          | 4.10 kg.           |

### Ordering code guide

XXXX-X-X-XXX-XX  
A B C D E

A Product Code  
B Reflector  
C Electrical Component  
D Lamp  
E Color



Icon definition

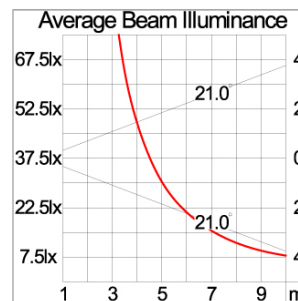
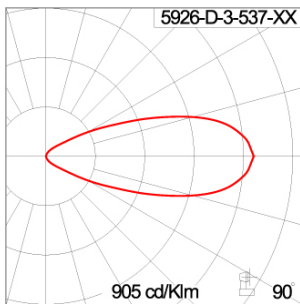
\*Due to the constancy of product development,  
we reserve the right to alter all specification  
without prior notice.

Unilamp Co., Ltd.  
461 Ramintra Road, Kannayao, Bangkok 10230 Thailand  
Tel : +66(0)2 943 2420-1, +66(0)2 946 4170-1  
Fax : +66(0)2 943 2419  
online@unilamp.co.th  
www.unilamp.co.th

### Specification

|                         |                                                                                                                                                                                                                                   |
|-------------------------|-----------------------------------------------------------------------------------------------------------------------------------------------------------------------------------------------------------------------------------|
| IEC Standard            | IEC 60598-1 General Requirement<br>IEC 60598-2-1 Fixed Luminaires                                                                                                                                                                 |
| Protection              | IP66 Class I                                                                                                                                                                                                                      |
| IK Rating               | Protection against mechanical impact IK10 on body and IK08 on optical part.                                                                                                                                                       |
| Luminaires Body Housing | High-pressure Die Cast Aluminium alloy body and components.<br>Extruded Aluminium S6063 alloy body with low copper content.                                                                                                       |
| Coating Process         | Nano Ceramic surface conversion, resistant to corrosive environment. Luminaire primarily coated with epoxy resin and top coated with UV stabilized polyester powder and cured in digital temperature controlled chamber at 200°C. |
| Diffuser                | Impact resistant safety tempered glass cover. Able to withstand the temperature up to 250°C.                                                                                                                                      |
| Lens                    | Molded PC lens from renowned manufacturers in various light distribution patterns.                                                                                                                                                |
| Adjustable Optic        | Adjustable aiming unit through graduated scale.                                                                                                                                                                                   |
| Gasket                  | Post-cured treated silicone gasket. Temperature and weather resistant. Working temperature -40°C to +200°C.                                                                                                                       |
| External Screws         | External screws are in stainless steel with protection grease.                                                                                                                                                                    |
| Cable Entry             | Cable entry protected by M20 cable gland. To be used with H05RN-F/ H07RN-F cable with 7-13mm. diameter.                                                                                                                           |
| Led                     | High efficiency LED module utilized chips from world renowned manufacturer. Assembled on MCPCB and mounted on to heat conductive material.                                                                                        |
| Driver                  | High quality constant current LED driver. Conform to safety standard and electromagnetic compatibility standard.                                                                                                                  |
| Internal Wire           | Tinned copper conductor with silicone insulated internal wire. IMQ approved. Working temperature -40°C to +180°C.                                                                                                                 |
| Terminal Block          | Terminal block in GFR PA6.6 for cable with cross section up to 2.5 sqmm. VDE approved.<br>Class1 luminaire provided with the earth connection.                                                                                    |
| Caution                 | Installation work has to be carried on according to the enclosed installation manual.                                                                                                                                             |
| Color                   | <div> <div>Black O1</div> <div>Graphite O2</div> <div>Dark Grey O3</div> <div>Aluminium Silver O4</div> <div>White O6</div> <div>Wooden Brown O7</div> </div>                                                                     |

### Light Distribution



# ALPHA

## MEDIUM ALPHA ROUND – GEAR ARM

### SPOTLIGHTS

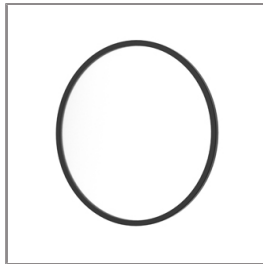


LAST UPDATE: 23-02-2024

#### Accessories



Ordering Code:  
AUN-GSH-0012-00  
Honey Comb Louver  
[pre-assembled from  
factory]



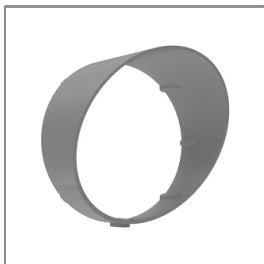
Ordering Code:  
AUN-SOF-0026-00  
Softening Filter  
[pre-assembled from  
factory]



Ordering Code:  
AUN-CAB-0002-00  
Cable HO7RN-F 3x1sqmm  
length 2000 mm with  
anti-humidity kit.  
[pre-assembled from  
factory]



Ordering Code:  
AUN-CAB-0004-00  
Cable HO7RN-F 3x1sqmm  
length 500mm. with  
anti-humidity  
kit.[pre-assembled from  
factory]



Ordering Code:  
AUN-GHS-0028-XX  
Glare Shield Cap.

\*Due to the constancy of product development,  
we reserve the right to alter all specification  
without prior notice.

Unilamp Co., Ltd.  
461 Ramintra Road, Kannayao, Bangkok 10230 Thailand  
Tel : +66[0]2 943 2420-1, +66[0]2 946 4170-1  
Fax : +66[0]2 943 2419  
online@unilamp.co.th  
www.unilamp.co.th