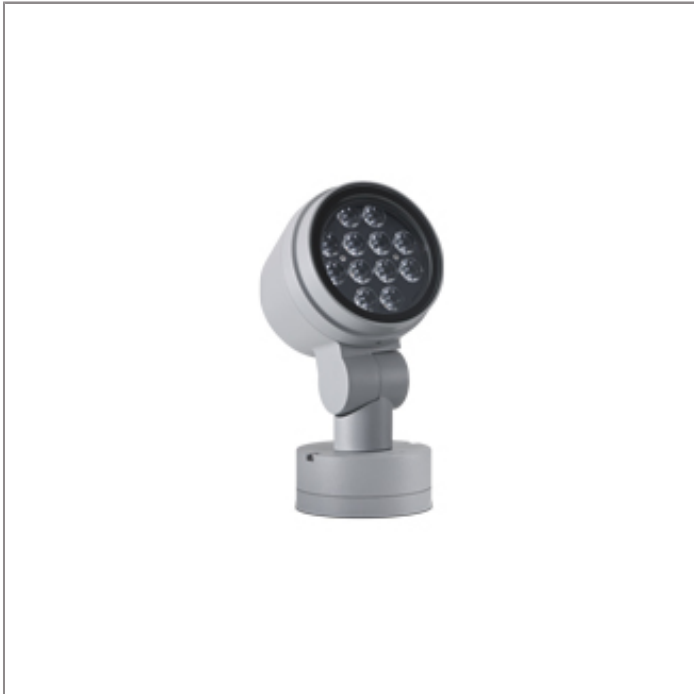


ALPHA

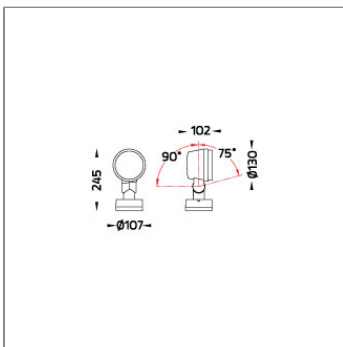
MEDIUM ALPHA ROUND – CC PROJECTOR



LAST UPDATE: 10-05-2024



ALPHA is an entirely new family of outdoor spotlights/floodlights engineered from scratch. The primary shapes and overall small dimensions make it possible to install ALPHA in most professional and residential lighting applications. High-quality polycarbonate optics provide accurate beam control and offer a wide selection of light distributions. ALPHA can be customized with accessories such as honeycombs, shields and various mounting solutions for poles and surfaces. The minimized amount of needed tools and usage of quick connectors simplifies the installation.



Technical Data



Ordering Code :	5924-B-2-534-XX
Lamp :	LED
Beam :	27°
CCT :	2700 K
CRI :	CRI >80
SDCM :	SDCM = 3
Lamp Lumen :	3120 lm
Luminaire Lumen :	2090 lm
Lamp Wattage :	26 W[700mA]
Luminaire Wattage :	26 W
Efficacy :	80 lm/W
Ambient Temperature :	50°C
Lumen Maintenance	L80B10 >108,000 h
Controller :	Remote
Input Voltage :	700mA, 34.8Vdc, Uin max 150Vdc
Net Weight :	3.10 kg.

Ordering code guide

XXXX-X-X-XXX-XX
A B C D E

- A Product Code
- B Reflector
- C Electrical Component
- D Lamp
- E Color



Icon definition

*Due to the constancy of product development, we reserve the right to alter all specification without prior notice.

Unilamp Co., Ltd.
461 Ramintra Road, Kannayao, Bangkok 10230 Thailand
Tel : +66[0]2 943 2420-1, +66[0]2 946 4170-1
Fax : +66[0]2 943 2419
online@unilamp.co.th
www.unilamp.co.th


ALPHA

MEDIUM ALPHA ROUND – CC PROJECTOR

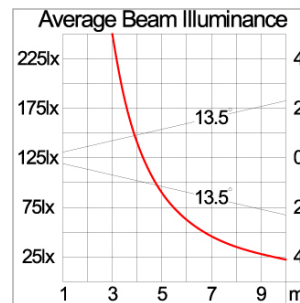
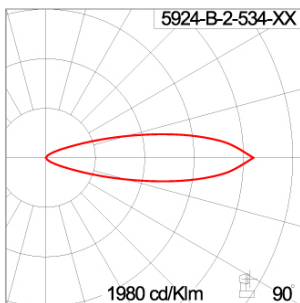


LAST UPDATE: 10-05-2024

Specification

IEC Standard	IEC 60598-1 General Requirement IEC 60598-2-1 Fixed Luminaires
Protection	IP66 Class III
IK Rating	Protection against mechanical impact IK10 on body and IK08 on optical part.
Luminaires Body Housing	High-pressure die cast aluminum alloy body and components.
Coating Process	Nano Ceramic surface conversion, resistant to corrosive environment. Luminaire primarily coated with epoxy resin and top coated with UV stabilized polyester powder and cured in digital temperature controlled chamber at 200°C.
Diffuser	Impact resistant safety tempered glass cover. Able to withstand the temperature up to 250°C.
Lens	Molded PC lens from renowned manufacturers in various light distribution patterns.
Adjustable Optic	Adjustable aiming unit through graduated scale.
Gasket	Post-cured treated silicone gasket. Temperature and weather resistant. Working temperature -40°C to +200°C.
External Screws	External screws are in stainless steel with protection grease.
Cable Entry	Cable entry protected by weather proof grommet. To be used with HO5RN-F/ HO7RN-F cable with 6-13mm. diameter.
Led	High efficiency LED module utilized chips from world renowned manufacturer. Assembled on MCPCB and mounted on to heat conductive material.
Driver	Driver is not included and has to be ordered separately.
Internal Wire	Tinned copper conductor with silicone insulated internal wire. IMQ approved. Working temperature -40°C to +180°C.
Terminal Block	Terminal block in GFR PA6.6 for cable with cross section up to 2.5 sqmm. VDE approved.
Caution	Installation work has to be carried on according to the enclosed installation manual.
Color	 Black O1 Graphite O2 Dark Grey O3 Aluminum Silver O4 White O6 Wooden Brown O7

Light Distribution



*Due to the constancy of product development,
we reserve the right to alter all specification
without prior notice.

Unilamp Co., Ltd.
461 Ramintra Road, Kannayao, Bangkok 10230 Thailand
Tel : +66(0)2 943 2420-1, +66(0)2 946 4170-1
Fax : +66(0)2 943 2419
online@unilamp.co.th
www.unilamp.co.th

ALPHA

MEDIUM ALPHA ROUND – CC PROJECTOR



LAST UPDATE: 10-05-2024

Accessories



Ordering Code:
AUN-CON-0009-00
IP68 Water Tight
Connecting Device, 3 Pole,
Cable Diameter 5.0 –
9.5mm.



Ordering Code:
AUN-GSH-0012-00
Honey Comb Louver
(pre-assembled from
factory)



Ordering Code:
AUN-SOF-0026-00
Softening Filter
(pre-assembled from
factory)



Ordering Code:
AUN-DRG-0008-00
LED Constant Current
Driver 700mA 40W. In IP67
GFR Polymer Box (On-Off)



Ordering Code:
AUN-DRG-0009-00
LED Constant Current
Driver 700mA 32W. In IP67
GFR Polymer Box (DIM
1-10V)



Ordering Code:
AUN-DRG-0010-00
LED Constant Current
Driver 700mA 38W. In
IP67 GFR Polymer Box
(DALI)



Ordering Code:
AUN-CON-0013-00
IP68 Water Tight
Connecting Device, 3 Pole,
Cable Diameter 7 – 11.5mm.



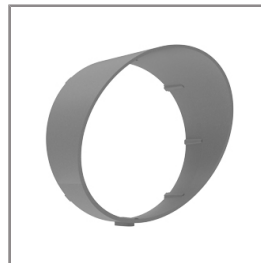
Ordering Code:
AUN-CAB-0001-00
Cable HO7RN-F 2x1sqmm
length 2000 mm with
anti-humidity kit.
(pre-assembled from
factory)



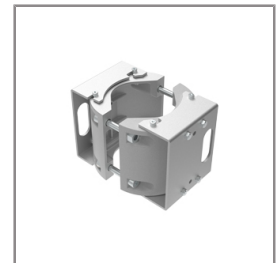
Ordering Code:
AUN-CLP-0004-XX
Pole Clamp Diameter
102-105mm



Ordering Code:
AUN-CAB-0005-00
Cable HO5RN-F 2x1sqmm
length 500mm. with
anti-humidity
kit. (pre-assembled from
factory)



Ordering Code:
AUN-GHS-0028-XX
Glare Shield Cap.



Ordering Code:
AUN-CLP-0006-XX
Pole Clamp Diameter
60-76mm.

*Due to the constancy of product development,
we reserve the right to alter all specification
without prior notice.

Unilamp Co., Ltd.
461 Ramintra Road, Kannayao, Bangkok 10230 Thailand
Tel : +66(0)2 943 2420-1, +66(0)2 946 4170-1
Fax : +66(0)2 943 2419
online@unilamp.co.th
www.unilamp.co.th

ALPHA

MEDIUM ALPHA ROUND – CC PROJECTOR



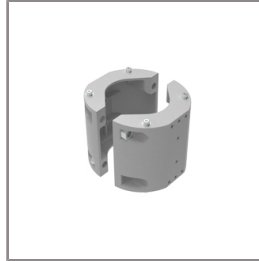
LAST UPDATE: 10-05-2024



Ordering Code:
AUN-MOT-0013-XX
Mounting arm for 1-3
Spotlights.



Ordering Code:
AUN-CLP-0008-XX
Pole Clamp Diameter
102-105mm. for mounting
arm.



Ordering Code:
AUN-CLP-0009-XX
Pole Clamp Diameter
60-76mm. for mounting
arm.



Ordering Code:
AUN-ESP-0001-00
Glass-Fiber Reinforced
Polymer Earth Spike



Ordering Code:
AUN-TRS-0001-00
Tree Strap for Small Base



Ordering Code:
ALUMINUM-POLE-FOR-ALPHA-SPOTLIGHT
Please contact Sales
Representative



Ordering Code:
STEEL-POLE-FOR-ALPHA-SPOTLIGHT
Please contact Sales
Representative

*Due to the constancy of product development,
we reserve the right to alter all specification
without prior notice.

Unilamp Co., Ltd.
461 Ramintra Road, Kannayao, Bangkok 10230 Thailand
Tel : +66[0]2 943 2420-1, +66[0]2 946 4170-1
Fax : +66[0]2 943 2419
online@unilamp.co.th
www.unilamp.co.th