

# ALPHA

## MEDIUM ALPHA ROUND – CC

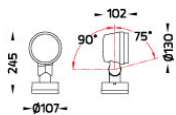
### SPOTLIGHT



LAST UPDATE: 21-07-2025



ALPHA is an entirely new family of outdoor spotlights/floodlights engineered from scratch. The primary shapes and overall small dimensions make it possible to install ALPHA in most professional and residential lighting applications. High-quality polycarbonate optics provide accurate beam control and offer a wide selection of light distributions. ALPHA can be customized with accessories such as honeycombs, shields and various mounting solutions for poles and surfaces. The minimized amount of needed tools and usage of quick connectors simplifies the installation.



### Technical Data



|                       |                                |
|-----------------------|--------------------------------|
| Ordering Code :       | 5924-A-2-535-XX                |
| Lamp :                | LED                            |
| Beam :                | 12°                            |
| CCT :                 | 3000 K                         |
| CRI :                 | CRI >80                        |
| SDCM :                | SDCM = 3                       |
| Lamp Lumen :          | 3120 lm                        |
| Luminaire Lumen :     | 2310 lm                        |
| Lamp Wattage :        | 26 W[700mA]                    |
| Luminaire Wattage :   | 26 W                           |
| Efficacy :            | 88 lm/W                        |
| Ambient Temperature : | 50°C                           |
| Lumen Maintenance     | L80B10 >108,000 h              |
| Controller :          | Remote                         |
| Input Voltage :       | 700mA, 34.8Vdc, Uin max 150Vdc |
| Net Weight :          | 3.10 kg.                       |

### Ordering code guide

XXXX-X-X-XXX-XX  
A B C D E

A Product Code  
B Reflector  
C Electrical Component  
D Lamp  
E Color



Icon definition

\*Due to the constancy of product development, we reserve the right to alter all specification without prior notice.

Unilamp Co., Ltd.  
461 Ramintra Road, Kannayao, Bangkok 10230 Thailand  
Tel : +66[0]2 943 2420-1, +66[0]2 946 4170-1  
Fax : +66[0]2 943 2419  
online@unilamp.co.th  
www.unilamp.co.th

# ALPHA

## MEDIUM ALPHA ROUND – CC

### SPOTLIGHT

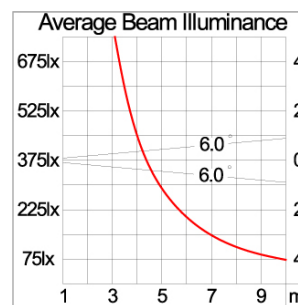
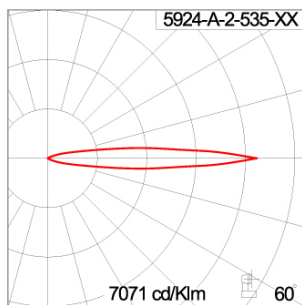


LAST UPDATE: 21-07-2025

#### Specification

|                         |   |
|-------------------------|---|
| IEC Standard            | IEC 60598-1 General Requirement<br>IEC 60598-2-1 Fixed Luminaires   |
| Protection              | IP66 Class III  |
| IK Rating               | Protection against mechanical impact IK10 on body and IK08 on optical part.   |
| Luminaires Body Housing | High-pressure die cast aluminum alloy body and components.  |
| Coating Process         | Nano Ceramic surface conversion, resistant to corrosive environment. Luminaire primarily coated with epoxy resin and top coated with UV stabilized polyester powder and cured in digital temperature controlled chamber at 200°C. |
| Diffuser                | Impact resistant safety tempered glass cover. Able to withstand the temperature up to 250°C.  |
| Lens                    | Molded PC lens from renowned manufacturers in various light distribution patterns.  |
| Adjustable Optic        | Adjustable aiming unit through graduated scale.   |
| Gasket                  | Post-cured treated silicone gasket. Temperature and weather resistant. Working temperature -40°C to +200°C.   |
| External Screws         | External screws are in stainless steel with protection grease.  |
| Cable Entry             | Cable entry protected by weather proof grommet. To be used with HO5RN-F/ HO7RN-F cable with 6-13mm. diameter.   |
| Led                     | High efficiency LED module utilized chips from world renowned manufacturer. Assembled on MCPCB and mounted on to heat conductive material.  |
| Driver                  | Driver is not included and has to be ordered separately.  |
| Internal Wire           | Tinned copper conductor with silicone insulated internal wire. IMQ approved. Working temperature -40°C to +180°C.   |
| Terminal Block          | Terminal block in GFR PA6.6 for cable with cross section up to 2.5 sqmm. VDE approved.  |
| Caution                 | Installation work has to be carried on according to the enclosed installation manual.   |
| Color                   | <div><div><div></div><div></div><div></div><div></div><div></div></div><div>Black O1<br/>Graphite O2<br/>Dark Grey O3<br/>Aluminum Silver O4<br/>White O6</div></div>   |

#### Light Distribution



\*Due to the constancy of product development,  
we reserve the right to alter all specification  
without prior notice.

Unilamp Co., Ltd.  
461 Ramintra Road, Kannayao, Bangkok 10230 Thailand  
Tel : +66[0]2 943 2420-1, +66[0]2 946 4170-1  
Fax : +66[0]2 943 2419  
online@unilamp.co.th  
www.unilamp.co.th

# ALPHA

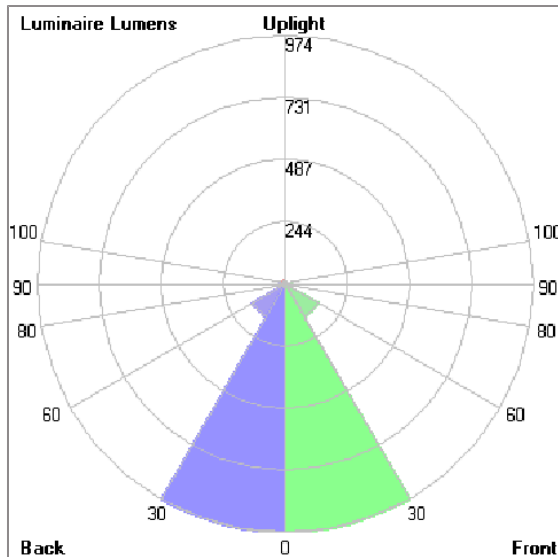
MEDIUM ALPHA ROUND – CC

SPOTLIGHT



LAST UPDATE: 21-07-2025

## Bug Report



### Lum. Classification System (LCS)

| LCS        | Zone      | %Lumens  | %Lamp | %Lum  |
|------------|-----------|----------|-------|-------|
| FL         | [0-30]    | 974.1    | 31.2  | 42.2  |
| FM         | [30-60]   | 148.8    | 4.8   | 6.4   |
| FH         | [60-80]   | 26.8     | 0.9   | 1.2   |
| FVH        | [80-90]   | 1.2      | 0.0   | 0.1   |
| BL         | [0-30]    | 974.1    | 31.2  | 42.2  |
| BM         | [30-60]   | 148.8    | 4.8   | 6.4   |
| BH         | [60-80]   | 26.8     | 0.9   | 1.2   |
| BVH        | [80-90]   | 1.2      | 0.0   | 0.1   |
| UL         | [90-100]  | 0.0      | 0.0   | 0.0   |
| UH         | [100-180] | 8.7      | 0.3   | 0.4   |
| Total      |           | 2310.5   | 74.1  | 100.0 |
| BUG Rating |           | B2-U1-G0 |       |       |

\*Due to the constancy of product development,  
we reserve the right to alter all specification  
without prior notice.

Unilamp Co., Ltd.  
461 Ramintra Road, Kannayao, Bangkok 10230 Thailand  
Tel : +66[0]2 943 2420-1, +66[0]2 946 4170-1  
Fax : +66[0]2 943 2419  
online@unilamp.co.th  
www.unilamp.co.th

# ALPHA

## MEDIUM ALPHA ROUND – CC

### SPOTLIGHT

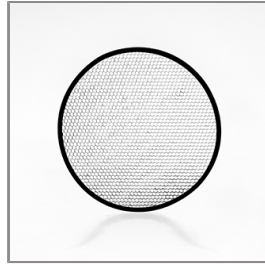


LAST UPDATE: 21-07-2025

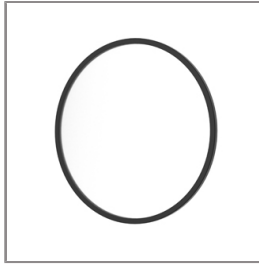
#### Accessories



Ordering Code:  
AUN-CON-0009-00  
IP68 connection device,  
cable diameter 5-9.5mm,  
On-Off



Ordering Code:  
AUN-GSH-0012-00  
Honeycomb louver, LED,  
pre-assembly from factory



Ordering Code:  
AUN-SOF-0026-00  
Softening filter, LED,  
pre-assembly from factory



Ordering Code:  
AUN-DRG-0008-00  
LED constant current  
driver, 700mA, 40W, with  
IP67 GFR polymer  
enclosure, On-Off



Ordering Code:  
AUN-DRG-0009-00  
LED constant current  
driver, 700mA, 32W, with  
IP67 GFR polymer  
enclosure, 1-10V



Ordering Code:  
AUN-DRG-0010-00  
LED constant current  
driver, 700mA, 38W, with  
IP67 GFR polymer  
enclosure, DALI



Ordering Code:  
AUN-CON-0013-00  
IP68 connection device,  
cable diameter 7-11.5mm,  
On-Off



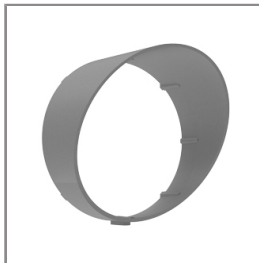
Ordering Code:  
AUN-CAB-0001-00  
Cable HO7RN-F 2x1sqmm,  
L= 2000, with UniBlock  
anti-humidity kit,  
pre-assembly from factory



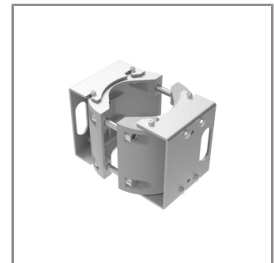
Ordering Code:  
AUN-CLP-0004-XX  
Pole clamp, pole diameter  
102-105mm



Ordering Code:  
AUN-CAB-0005-00  
Cable HO5RN-F 2x1sqmm,  
L= 500, with UniBlock  
anti-humidity kit,  
pre-assembly from factory



Ordering Code:  
AUN-GHS-0028-XX  
Glare shield cap



Ordering Code:  
AUN-CLP-0006-XX  
Pole clamp, pole diameter  
60-76mm

\*Due to the constancy of product development,  
we reserve the right to alter all specification  
without prior notice.

Unilamp Co., Ltd.  
461 Ramintra Road, Kannayao, Bangkok 10230 Thailand  
Tel : +66[0]2 943 2420-1, +66[0]2 946 4170-1  
Fax : +66[0]2 943 2419  
online@unilamp.co.th  
www.unilamp.co.th

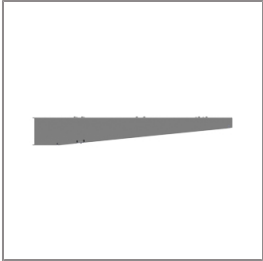
# ALPHA

## MEDIUM ALPHA ROUND – CC

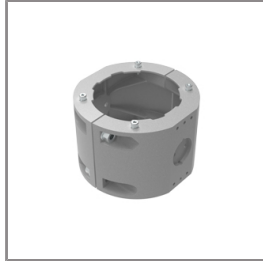
### SPOTLIGHT



LAST UPDATE: 21-07-2025



Ordering Code:  
AUN-MOT-0013-XX  
Pole mounting arm, for 1-3  
projector



Ordering Code:  
AUN-CLP-0008-XX  
Pole clamp, pole diameter  
102-105mm, for wall or  
pole mounting arm



Ordering Code:  
AUN-CLP-0009-XX  
Pole clamp, pole diameter  
60-76mm, for wall or pole  
mounting arm



Ordering Code:  
AUN-ESP-0001-00  
Earth spike, GFR polymer



Ordering Code:  
AUN-TRS-0001-00  
Tree strap, small mounting  
base



Ordering Code:  
ALUMINUM-POLE-FOR-ALPHA-SPOTLIGHT  
Please contact Sales  
Representative



Ordering Code:  
STEEL-POLE-FOR-ALPHA-SPOTLIGHT  
Please contact Sales  
Representative

\*Due to the constancy of product development,  
we reserve the right to alter all specification  
without prior notice.

Unilamp Co., Ltd.  
461 Ramintra Road, Kannayao, Bangkok 10230 Thailand  
Tel : +66[0]2 943 2420-1, +66[0]2 946 4170-1  
Fax : +66[0]2 943 2419  
online@unilamp.co.th  
www.unilamp.co.th