

# TELESCOPE

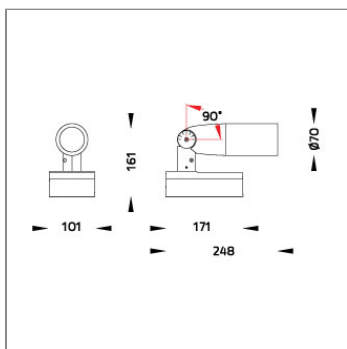
## TELESCOPE PROJECTOR



LAST UPDATE: 17-10-2024



TELESCOPE is a low glare long snoot ground mount or wall mount spotlight with strong base for permanent installation and with an earth spike for portable use. Its distinctive lamp compartment with trunk limits the undesired light spill and available with a choice of six colors. TELESCOPE is fitted with COB LED with high CRI in 2700K, 3000K or 4000K color temperature with good color consistency. Retrofit solution for E27 and GU10 Led lamps is also available. The choices of beam angles are narrow, medium and wide. It is suitable to light up small plants and woody bushes from a low mounting height as well as all other outdoor spotlighting application. Additional accessories such as tree strap is also available.



### Technical Data



|                       |                    |
|-----------------------|--------------------|
| Ordering Code :       | 5911-B-5-901-XX    |
| Lamp :                | LED                |
| Beam :                | 27°                |
| CCT :                 | 3000 K             |
| CRI :                 | CRI >80            |
| SDCM :                | SDCM = 3           |
| Lamp Lumen :          | 1850 lm            |
| Luminaire Lumen :     | 1110 lm            |
| Lamp Wattage :        | 12 W               |
| Luminaire Wattage :   | 14 W               |
| Efficacy :            | 79 lm/W            |
| Ambient Temperature : | 50°C               |
| Lumen Maintenance     | L70B10 >60,000 h   |
| Controller :          | DALI               |
| Input Voltage :       | 220-240Vac 50/60Hz |
| Net Weight :          | - kg.              |

### Ordering code guide

XXXX-X-X-XXX-XX  
A B C D E

- A Product Code
- B Reflector
- C Electrical Component
- D Lamp
- E Color



Icon definition

\*Due to the constancy of product development, we reserve the right to alter all specification without prior notice.

Unilamp Co., Ltd.  
461 Ramintra Road, Kannayao, Bangkok 10230 Thailand  
Tel : +66(O)2 943 2420-1, +66(O)2 946 4170-1  
Fax : +66(O)2 943 2419  
online@unilamp.co.th  
www.unilamp.co.th

# TELESCOPE

## TELESCOPE PROJECTOR



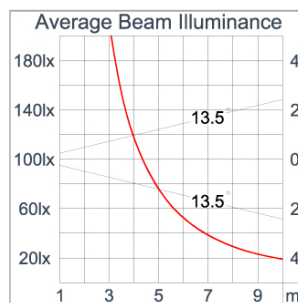
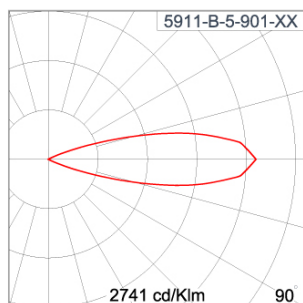
LAST UPDATE: 17-10-2024

### Specification

|                         |  |
|-------------------------|--|
| IEC Standard            | IEC 60598-1 General Requirement<br>IEC 60598-2-1 Fixed Luminaires  |
| Protection              | IP65 Class I   |
| IK Rating               | Protection against mechanical impact IK10 on body and IK06 on optical part.  |
| Luminaires Body Housing | High-pressure die cast aluminum alloy body and components.<br>Extruded aluminum 6063 alloy body with low copper content.   |
| Coating Process         | Nano Ceramic surface conversion, resistant to corrosive environment. Luminaire primarily coated with epoxy resin and top coated with UV stabilized polyester powder and cured in digital temperature controlled chamber at 200°C.  |
| Diffuser                | Impact resistant safety tempered glass cover. Able to withstand the temperature up to 250°C. Glass flushes to the front cover, no accumulation of dust and water.  |
| Reflector               | High performance anodized spun aluminum reflector.   |
| Adjustable Optic        | Adjustable aiming unit through graduated scale.  |
| Gasket                  | Post-cured treated silicone gasket. Temperature and weather resistant. Working temperature -40°C to +200°C.  |
| External Screws         | External screws are in stainless steel with protection grease.   |
| Cable Entry             | Cable entry protected by M20 cable gland. To be used with H05RN-F/ H07RN-F cable with 7-13mm. diameter.  |
| Led                     | High efficiency LED module in COB technology. Assembled on MCPCB and mounted on to heat conductive material.   |
| Driver                  | High quality DALI driver in constant current. Conform to applicable safety standards and electromagnetic compatibility.  |
| Internal Wire           | Tinned copper conductor with silicone insulated internal wire. IMQ approved. Working temperature -40°C to +180°C.<br>Tinned copper conductor with PTFE insulated internal wire. IMQ approved. Working temperature -40°C to +250°C. |
| Terminal Block          | Terminal block in GFR PA6.6 for cable with cross section up to 2.5 sqmm. VDE approved.<br>Class1 luminaire provided with the earth connection.   |
| Caution                 | Installation work has to be carried on according to the enclosed installation manual.  |

|       |  |
|-------|--|
| Color |  Black 01           |
|       |  Graphite 02        |
|       |  Dark Grey 03       |
|       |  Aluminum Silver 04 |
|       |  White 06           |
|       |  Wooden Brown 07    |

### Light Distribution



\*Due to the constancy of product development,  
we reserve the right to alter all specification  
without prior notice.

Unilamp Co., Ltd.  
461 Ramintra Road, Kannayao, Bangkok 10230 Thailand  
Tel : +66(0)2 943 2420-1, +66(0)2 946 4170-1  
Fax : +66(0)2 943 2419  
online@unilamp.co.th  
www.unilamp.co.th

# TELESCOPE

## TELESCOPE PROJECTOR



LAST UPDATE: 17-10-2024

### Accessories



Ordering Code:  
AUN-CON-0011-00  
IP68 connection device,  
cable diameter 7.1-13mm,  
1-10V or DALI



Ordering Code:  
AUN-GSH-0014-00  
Honeycomb louver, LED,  
pre-assembly from factory



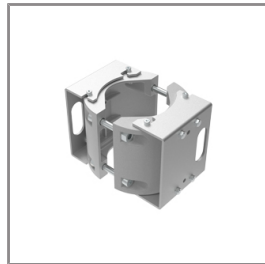
Ordering Code:  
AUN-CON-0014-00  
IP68 connection device,  
cable diameter 8-12.5mm,  
1-10V or DALI



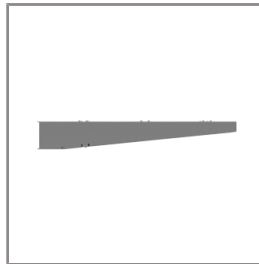
Ordering Code:  
AUN-CAB-0003-00  
Cable 3x1sqmm and  
2x0.35sqmm, L= 2000,  
with UniBlock  
anti-humidity kit,  
pre-assembly from factory



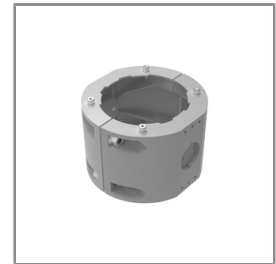
Ordering Code:  
AUN-CLP-0004-XX  
Pole clamp, pole diameter  
102-105mm



Ordering Code:  
AUN-CLP-0006-XX  
Pole clamp, pole diameter  
60-76mm



Ordering Code:  
AUN-MOT-0013-XX  
Pole mounting arm, for 1-3  
projector



Ordering Code:  
AUN-CLP-0008-XX  
Pole clamp, pole diameter  
102-105mm, for wall or  
pole mounting arm



Ordering Code:  
AUN-CLP-0009-XX  
Pole clamp, pole diameter  
60-76mm, for wall or pole  
mounting arm



Ordering Code:  
AUN-ESP-0001-00  
Earth spike, GFR polymer



Ordering Code:  
AUN-TRS-0001-00  
Tree strap, small mounting  
base



Ordering Code:  
ALUMINUM-POLE-FOR-TELESCOPE  
Please contact Sales  
Representative

\*Due to the constancy of product development,  
we reserve the right to alter all specification  
without prior notice.

Unilamp Co., Ltd.  
461 Ramintra Road, Kannayao, Bangkok 10230 Thailand  
Tel : +66[0]2 943 2420-1, +66[0]2 946 4170-1  
Fax : +66[0]2 943 2419  
online@unilamp.co.th  
www.unilamp.co.th

# TELESCOPE

TELESCOPE  
PROJECTOR

 **Unilamp**

LAST UPDATE: 17-10-2024



Ordering Code:  
STEEL-POLE-FOR-TELESCOPE  
Please contact Sales  
Representative

\*Due to the constancy of product development,  
we reserve the right to alter all specification  
without prior notice.

---

Unilamp Co., Ltd.  
461 Ramintra Road, Kannayao, Bangkok 10230 Thailand  
Tel : +66[0]2 943 2420-1, +66[0]2 946 4170-1  
Fax : +66[0]2 943 2419  
online@unilamp.co.th  
www.unilamp.co.th