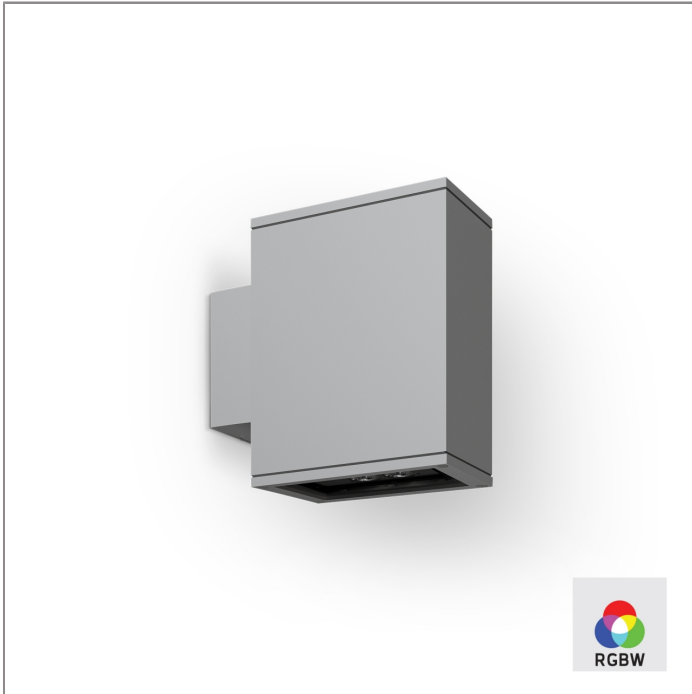


# BRONCO

MEGA BRONCO – UP / DOWN  
WALL SURFACE MOUNT



LAST UPDATE: 24-02-2025



BRONCO is a contemporary slim luminaire family available as wall surface or ceiling mount configuration. The housing is made from extruded aluminum and enhanced LM6 die-cast aluminum which make it highly corrosion resistant to any extreme environment. BRONCO is designed and tested under high ambient thermal condition. It is protected from the ingress of dust and water and can be used for both outdoor and indoor application. The luminaire is equipped with high-power LED and is available in 2700K, 3000K, 4000K and RGBW option. Optics are utilized to direct the light in wide variety of light distributions. BRONCO is an excellent choice for a widespread range of lighting tasks in modern architectural settings such as highlighting of columns, building facades and high ceilings.



## Technical Data



|                       |                    |
|-----------------------|--------------------|
| Ordering Code :       | 5221-B-5-440-XX    |
| Lamp :                | LED                |
| Beam :                | 26°                |
| CCT :                 | RGBW               |
| Lamp Lumen :          | 2x1600 lm          |
| Luminaire Lumen :     | 3060 lm            |
| Lamp Wattage :        | 2x22 W             |
| Luminaire Wattage :   | 50 W               |
| Efficacy :            | 61 lm/W            |
| Ambient Temperature : | 50°C               |
| Controller :          | DALI               |
| Input Voltage :       | 220-240Vac 50/60Hz |
| Net Weight :          | 5.20 kg.           |

### Ordering code guide

XXXX-X-X-XXX-XX

A B C D E

- A Product Code
- B Reflector
- C Electrical Component
- D Lamp
- E Color



Icon definition

\*Due to the constancy of product development, we reserve the right to alter all specification without prior notice.

Unilamp Co., Ltd.  
461 Ramintra Road, Kannayao, Bangkok 10230 Thailand  
Tel : +66(O)2 943 2420-1, +66(O)2 946 4170-1  
Fax : +66(O)2 943 2419  
online@unilamp.co.th  
www.unilamp.co.th

# BRONCO

## MEGA BRONCO – UP / DOWN WALL SURFACE MOUNT

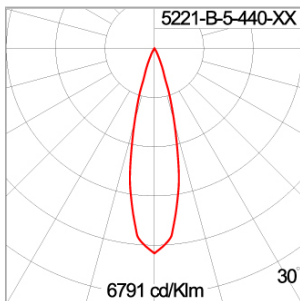


LAST UPDATE: 24-02-2025

### Specification

|                         |   |  |          |  |             |  |              |  |                    |  |          |
|-------------------------|---|--|----------|--|-------------|--|--------------|--|--------------------|--|----------|
| IEC Standard            | IEC 60598-1 General Requirement<br>IEC 60598-2-1 Fixed Luminaires   |  |          |  |             |  |              |  |                    |  |          |
| Protection              | IP66 Class I  |  |          |  |             |  |              |  |                    |  |          |
| IK Rating               | Protection against mechanical impact IK08 on body and IK07 optical part.  |  |          |  |             |  |              |  |                    |  |          |
| Luminaires Body Housing | High-pressure die cast aluminum alloy body and components.<br>Extruded aluminum 56063 alloy body with low copper content.   |  |          |  |             |  |              |  |                    |  |          |
| Coating Process         | Nano Ceramic surface conversion, resistant to corrosive environment. Luminaire primarily coated with epoxy resin and top coated with UV stabilized polyester powder and cured in digital temperature controlled chamber at 200°C. |  |          |  |             |  |              |  |                    |  |          |
| Diffuser                | Impact resistant safety tempered glass cover. Able to withstand the temperature up to 250°C.  |  |          |  |             |  |              |  |                    |  |          |
| Lens                    | Molded PMMA lens from renowned manufacturers in various light distribution patterns.  |  |          |  |             |  |              |  |                    |  |          |
| Gasket                  | Post-cured treated silicone gasket. Temperature and weather resistant. Working temperature -40°C to +200°C.   |  |          |  |             |  |              |  |                    |  |          |
| External Screws         | External screws are in stainless steel with protection grease.  |  |          |  |             |  |              |  |                    |  |          |
| Cable Entry             | Cable entry protected by weather proof grommet. To be used with HO5RN-F/ HO7RN-F cable with 6-13mm. diameter.   |  |          |  |             |  |              |  |                    |  |          |
| Led                     | High efficiency LED module utilized chips from world renowned manufacturer. Assembled on MCPCB and mounted on to heat conductive material.  |  |          |  |             |  |              |  |                    |  |          |
| Driver                  | High quality DALI Driver in constant current. Conform to applicable safety standards and electromagnetic compatibility.   |  |          |  |             |  |              |  |                    |  |          |
| Enhanced Protection     | The luminaire is equipped with a 10kV surge protection device, the function of the protector is indicated by a LED, performance in compliance with IEC61643-11.   |  |          |  |             |  |              |  |                    |  |          |
| Internal Wire           | Tinned copper conductor with silicone insulated internal wire. IMQ approved. Working temperature -40°C to +180°C.   |  |          |  |             |  |              |  |                    |  |          |
| Terminal Block          | Assembled with quick connector for cable with cross section up to 2.5 sqmm. from ADELS or equivalents. VDE approved.<br>Class1 luminaire provided with the earth connection.  |  |          |  |             |  |              |  |                    |  |          |
| Caution                 | Installation work has to be carried on according to the enclosed installation manual.   |  |          |  |             |  |              |  |                    |  |          |
| Color                   | <table><tr><td></td><td>Black O1</td></tr><tr><td></td><td>Graphite O2</td></tr><tr><td></td><td>Dark Grey O3</td></tr><tr><td></td><td>Aluminum Silver O4</td></tr><tr><td></td><td>White O6</td></tr></table>                   |  | Black O1 |  | Graphite O2 |  | Dark Grey O3 |  | Aluminum Silver O4 |  | White O6 |
|                         | Black O1  |  |          |  |             |  |              |  |                    |  |          |
|                         | Graphite O2   |  |          |  |             |  |              |  |                    |  |          |
|                         | Dark Grey O3  |  |          |  |             |  |              |  |                    |  |          |
|                         | Aluminum Silver O4  |  |          |  |             |  |              |  |                    |  |          |
|                         | White O6  |  |          |  |             |  |              |  |                    |  |          |

### Light Distribution



\*Due to the constancy of product development,  
we reserve the right to alter all specification  
without prior notice.

Unilamp Co., Ltd.  
461 Ramintra Road, Kannayao, Bangkok 10230 Thailand  
Tel : +66(0)2 943 2420-1, +66(0)2 946 4170-1  
Fax : +66(0)2 943 2419  
online@unilamp.co.th  
www.unilamp.co.th