

# KRONOS

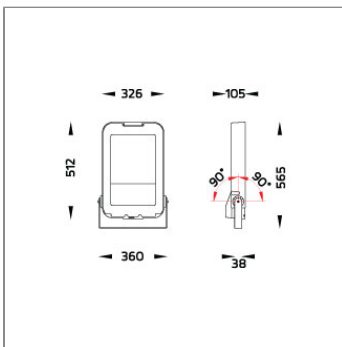
## KRONOS – FLOOD LIGHT / ROAD OPTIC PROJECTOR



LAST UPDATE: 02-04-2025



A family of Area Light, Surface Washer and Architectural-Grade Flood Light in various mounting application KRONOS utilizes the latest LED technology from renowned manufacturers with high CRI in 3000K or 4000K. The high quality corrosion resistance aluminium housing is filmed with Nano Ceramic and coated with super durable powder. The heat management has been delicately designed and tested under ambient thermal condition Ta 50°C. A graduated scale provides accurate aiming of the luminaire. KRONOS offers various light distribution patterns e.g. Asymmetric Flat Beam [Road Optic] for USA, European, Middle East and Asia regulations, Asymmetric Forward Throw for squares and open spaces, as well as Narrow, Medium, Wide and Elliptical beams for floodlight and façade light applications.



### Technical Data



Ordering Code :	2272-K-4-668-XX
Lamp :	LED
Beam :	T4
CCT :	3000 K
CRI :	CRI >80
SDCM :	SDCM = 3
Lamp Lumen :	23040 lm
Luminaire Lumen :	16720 lm
Lamp Wattage :	127 W
Luminaire Wattage :	136 W
Efficacy :	122 lm/W
Ambient Temperature :	40°C
Lumen Maintenance	L70B10 >72,000 h
Controller :	DIM 1-10V
Input Voltage :	220-240Vac 50/60Hz
Net Weight :	13.80 kg.

### Ordering code guide

XXXX-X-X-XXX-XX  
A B C D E

A Product Code  
B Reflector  
C Electrical Component  
D Lamp  
E Color



Icon definition

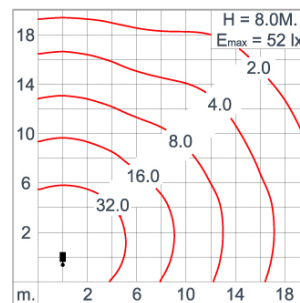
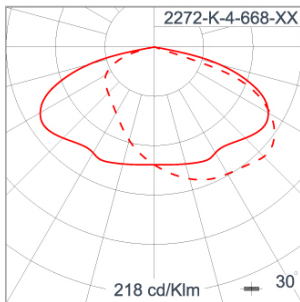
\*Due to the constancy of product development, we reserve the right to alter all specification without prior notice.

Unilamp Co., Ltd.  
461 Ramintra Road, Kannayao, Bangkok 10230 Thailand  
Tel : +66(0)2 943 2420-1, +66(0)2 946 4170-1  
Fax : +66(0)2 943 2419  
online@unilamp.co.th  
www.unilamp.co.th

### Specification

IEC Standard	IEC 60598-1 General Requirement IEC 60598-2-1 Fixed Luminaires
Protection	IP65 Class I
IK Rating	Protection against mechanical impact IK08 on body and IK07 optical part.
Luminaires Body Housing	High-pressure die cast aluminum alloy body and components.
Coating Process	Nano Ceramic surface conversion, resistant to corrosive environment. Luminaire primarily coated with epoxy resin and top coated with UV stabilized polyester powder and cured in digital temperature controlled chamber at 200°C.
Diffuser	Impact resistant safety tempered glass cover. Able to withstand the temperature up to 250°C.
Lens	Molded PC lens from renowned manufacturers in various light distribution patterns.
Adjustable Optic	Adjustable aiming unit through graduated scale.
Gasket	Post-cured treated silicone gasket. Temperature and weather resistant. Working temperature -40°C to +200°C.
External Screws	External screws are in stainless steel with protection grease.
Cable Entry	Cable entry protected by M20 cable gland. To be used with H05RN-F/ H07RN-F cable with 7-13mm. diameter.
Led	High efficiency LED module utilized chips from world renowned manufacturer. Assembled on MCPCB and mounted on to heat conductive material.
Driver	High quality Dimmable Driver (1-10V) in constant current. Conform to applicable safety standards and electromagnetic compatibility.
Internal Wire	Tinned copper conductor with silicone insulated internal wire. IMQ approved. Working temperature -40°C to +180°C.
Terminal Block	Terminal block in GFR PA6.6 for cable with cross section up to 2.5 sqmm. VDE approved. Class1 luminaire provided with the earth connection.
Pre-Wire Cable	Pre-wired with 5-core cable for power (3x1 sqmm.) and dimming signal (2x0.35 sqmm.).
Caution	Installation work has to be carried on according to the enclosed installation manual.
Color	<div> <div style="display: inline-block; width: 15px; height: 15px; background-color: black; margin-right: 5px;"></div> Black 01                 <div style="display: inline-block; width: 15px; height: 15px; background-color: #333; margin-right: 5px; margin-left: 10px;"></div> Graphite 02                 <div style="display: inline-block; width: 15px; height: 15px; background-color: #666; margin-right: 5px; margin-left: 10px;"></div> Dark Grey 03                 <div style="display: inline-block; width: 15px; height: 15px; background-color: #ccc; margin-right: 5px; margin-left: 10px;"></div> Aluminum Silver 04                 <div style="display: inline-block; width: 15px; height: 15px; background-color: #fff; margin-right: 5px; margin-left: 10px;"></div> White 06             </div>

### Light Distribution



# KRONOS

## KRONOS – FLOOD LIGHT / ROAD OPTIC PROJECTOR



LAST UPDATE: 02-04-2025

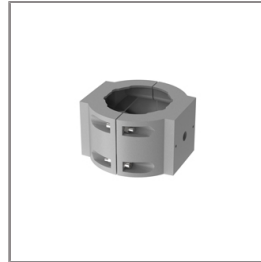
### Accessories



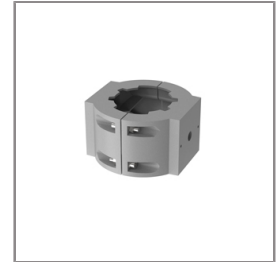
Ordering Code:  
AUN-CON-0011-00  
IP68 connection device,  
cable diameter 7.1-13mm,  
1-10V or DALI



Ordering Code:  
AUN-CON-0014-00  
IP68 connection device,  
cable diameter 8-12.5mm,  
1-10V or DALI



Ordering Code:  
AUN-CLP-0003-XX  
Pole clamp, pole diameter  
114mm



Ordering Code:  
AUN-CLP-0002-XX  
Pole clamp, pole diameter  
102-105mm



Ordering Code:  
STEEL-POLE-FOR-KRONOS-FLOODLIGHT  
Please contact Sales  
Representative



Ordering Code:  
ALUMINUM-POLE-FOR-KRONOS-FLOODLIGHT  
Please contact Sales  
Representative



Ordering Code:  
AUN-MOT-0001-XX  
Pole mount adaptor, spigot  
diameter 76mm for  
KRONOS



Ordering Code:  
AUN-MOT-0002-XX  
Wall or pole mounting arm,  
pole diameter 114mm for  
KRONOS



Ordering Code:  
AUN-MOT-0003-XX  
Mounting base, rotateable,  
1-10V or DALI for KRONOS



Ordering Code:  
AUN-MOT-0004-XX  
Wall or pole mounting arm,  
pole diameter 114mm,  
double sided for KRONOS

\*Due to the constancy of product development,  
we reserve the right to alter all specification  
without prior notice.

Unilamp Co., Ltd.  
461 Ramintra Road, Kannayao, Bangkok 10230 Thailand  
Tel : +66[0]2 943 2420-1, +66[0]2 946 4170-1  
Fax : +66[0]2 943 2419  
online@unilamp.co.th  
www.unilamp.co.th